



*Woodworking machinery at its best!*

## **DUST & CHIP EXTRACTOR WITH AUTO START OPERATORS MANUAL**

**MODEL: DE550AUTO**



**Charnwood, Cedar Court, Walker Road,  
Hilltop Industrial Estate, Bardon Hill, Leicestershire, LE67 1TU**

**Tel. 01530 516 926**

**email: [sales@charnwood.net](mailto:sales@charnwood.net) website: [www.charnwood.net](http://www.charnwood.net)**

# GENERAL SAFETY RULES



**WARNING:** Do not attempt to operate the machine until you have read thoroughly and understood completely all instructions, rules, etc. contained in this manual. Failure to comply may result in accidents involving fire, electric shock, or serious personal injury. Keep this owner's manual and review frequently for continuous safe operation.

1. Know your machine. For your own safety, read the owner's manual carefully. Learn its application and limitations, as well as specific potential hazards pertinent to this machine.
2. Make sure all tools are properly earthed.
3. Keep guards in place and in working order. If a guard must be removed for maintenance or cleaning, make sure it is properly replaced before using the machine again.
4. Remove adjusting keys and spanners. Form a habit of checking to see that the keys and adjusting spanners are removed from the machine before switched it on.
5. Keep your work area clean. Cluttered areas and workbenches increase the chance of an accident.
6. Do not use in dangerous environments. Do not use power tools in damp or wet locations or expose them to rain. Keep work areas well illuminated.
7. Keep children away. All visitors should be kept a safe distance from the work area.
8. Make workshop childproof. Use padlocks, master switches and remove starter keys.
9. Do not force the machine. It will do the job better and be safer at the rate for which it is designed.
10. Use the right tools. Do not force the machine or attachments to do a job for which they are not designed. Contact the manufacturer or distributor if there is any question about the machine's suitability for a particular task.
11. Wear proper apparel. Avoid loose clothing, gloves, ties, rings, bracelets, and jewellery which could get caught in moving parts. Non-slip footwear is recommended. Wear protective hair covering to contain long hair.
12. Always use safety glasses. Normal spectacles only have impact resistant lenses. They are not safety glasses.
13. Do not over-reach. Keep proper footing and balance, at all times.
14. Maintain the machine in good condition. Keep the machine clean for best and safest performance. Follow instructions for lubrication and changing accessories.

15. Disconnect the machine from power source before servicing and when changing the blade.
16. Never leave the machine running unattended. Turn the power off. Do not leave the machine until it comes to a complete stop.
17. Do not use any power tools while under the effects of drugs, alcohol or medication.
18. Always wear a face or dust mask if operation creates a lot of dust and/or chips. Always operate the tool in a well ventilated area and provide for proper dust removal. Use a suitable dust extractor.

## ADDITIONAL RULES FOR DUST EXTRACTORS

1. Dust extractors are frequently moved around the workshop. Make sure that mains cables and extractor hoses are positioned in such a way that they do not present a trip hazard.
2. Do not pick up pieces of metal or chunks of wood.
3. Switch off and unplug the extractor before removing the collection bag and/or filter.
4. Do not allow the collection bag to become over full.
5. When necessary, wash, thoroughly rinse and completely dry the filter bag. Using a wet or damp filter bag will reduce its efficiency as it will quickly become clogged.
6. Dispose of waste in accordance with local regulations.
7. DO NOT use without the filter bag and collection bag in place.
8. Keep hair, loose clothing, fingers, and all parts of the body away from the end of the suction hose.

## Specification

Motor (induction)	550w (3/4hp), 240v
Flowrate (cubic metres per hour)	1150m <sup>3</sup> /hour
Inlet Diameter	100mm
Collection Bag capacity	65 Litres
Maximum continuous run time	2 hours
Dimensions (WxDxH)	525mm x 880mm x 1570mm
Weight	18.5kg
Rating	Hobby
Warranty	5 Year

# Rating Description

**Hobby:** Suitable for hobby users and woodworking enthusiasts.

Generally lighter weight machines with lower power ratings and smaller tooling capacities. Typically only ever used by one person for short periods of time or longer periods of time infrequently. Machinery should be well maintained in a clean, dry environment such as a home workshop, garage or timber shed. Expected maximum use of 200 hours annually.

# Unpacking



Open the carton and carefully unpack all of the contents.



Familiarise yourself with the parts and take the time to read these instructions.



# Assembly



## Fit The Wheels To The Base Frame

Take the M10 bolt, then add M10 washer, wheel, M10 nut and M10 split washer.

Tighten the nut so that the wheel can still spin freely.



Thread the assembly into the base frame axle. Tighten with a 16mm Spanner.



## Assemble The H Frame

Assemble the two side panels and horizontal plate using 4 off M8 x 10mm coach bolts and M8 nuts.

Tighten with a 13mm spanner



### **Complete The Base**

Sit the side panel assembly onto the base frame.

Secure in place using 4 off M8 x 40mm coach bolt and M8 nuts.



Tighten with a 13mm spanner



### **Prepare The Fan Unit**

Remove 2 of the 3 nuts from each side fixing plate.

Using an 8mm spanner, remove the centre nut and the nut nearest to the motor.



Repeat for the other side.



### Fit The Fan Unit

Lift the fan unit up onto the assembled base so that the motor end sits above the wheels.

Line up the bolts into the corresponding holes in the side frames.



Refit the nuts and tighten using an 8mm spanner.



### **Fit The filter Bag Clamp**

Insert the tail end of the clamp into the fold at the open end of the filter bag.

Feed it around all the way until it reappears.



### **Fit The Filter Bag Support**

Insert the end of the support arm into a hole in the fan unit.

### **Fit The Filter Bag**

Hook the loop on top of the filter bag onto the support arm.

Pull the filter bag over the rim of the fan unit and secure in place using the clamp.

The clamp is spring loaded to ensure the correct amount of tension is applied.

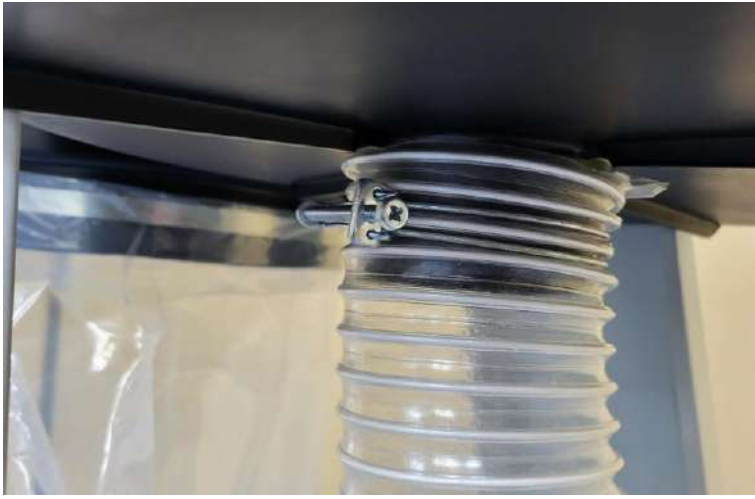


### **Fit The Collection Bag**

Place the collection bag over the lower rim of the fan unit. If the bag is too big put a fold in it.

Secure the bag using the spring loaded clamp.

If you find this stage difficult, use tape to hold the plastic bag in place, whilst fitting the clamp.



### **Fit The Hose**

Place a hose clamp over one end of the hose then offer it up to the inlet.

Tighten the clamp with a screw driver or 10mm spanner.

# Operating the Extractor



The Extractor is fitted with a power socket to allow automatic switching when operating the power tool.

Plug your power tool into the socket.

Please Note:  
Maximum power draw 2200 Watts (2.2Kw).



The Switch has 3 positions:

On / Off / Auto

The dust extractor can be operated manually by moving the switch between the Off and On positions.

When Auto is selected, the extractor will start when it detects the power draw from the power tool.

When the power tool is switched off the extractor will continue to run for a few seconds to clear the dust from the hose, before stopping.

Empty the collection bag before it is overfull, at least 5cm below the rim of the collector body, and dispose of the waste in accordance with the current requirements of your local authority.

Please Note: Maximum recommended total hose length in use at any time is 3 metres. Longer hose lengths may be used but will reduce the performance.

When using the extractor with machines which have a smaller diameter connection, it is recommended to run the 100mm diameter hose from the extractor up to that machines dust outlet and fit the appropriate sized reducer at that point. This will maintain the airflow rate of the unit. For some applications it may be more convenient to use a smaller diameter hose. This will inevitably reduce the performance of the extractor and the length of small diameter hose should be kept to a minimum.

# Optional Items

More information can be found on our website [www.charnwood.net](http://www.charnwood.net)

W690PB Replacement Plastic Collection Bags: 600mm x 900mm, pack of 10

Flexible Transparent Extraction Hose:

Priced per metre and cut to length.

Available in 7 different diameters: 38mm, 50mm, 65mm, 75mm, 100mm, 125mm, 150mm

Metal Hose Clamps: For securing the hose, available in all diameters.

Reducing Connectors: Charnwood have a large range of plastic connectors, which allow different diameter hoses to be connected together, or for connecting to bench top machines with different sized outlets.



# Troubleshooting

## Reduced Performance

Check the collection bag is not full.  
Empty or replace the bag as required.

Check the filter bag is not clogged. Turn the bag inside out and scrape the inside clean. The filter bag can also be washed, ensure it is completely dry before refitting.

Examine the hose system looking for blockages. Remove the hose and clear out the blockage.

Examine the hose and fittings for splits or air leaks. Secure the leaks and replace any worn hose.

## Rattling noise and vibration

Large pieces may be blocked by the inlet grill. Remove the hose and Y-shaped connector from fan housing and check for pieces of wood or foreign bodies that are unable to pass through the grill. Remove them and reattach hose.

## Extractor will not start

Check circuit breaker. Reset as required.

Loose wire. Remove the switch, check the wires are pushed firmly onto the terminals.

Failed switch. Replace the on/off switch.

## Extractor does not run but buzzing noise heard from motor

Capacitor failure. (for confirmation, spin the motor shaft by hand. Press the start button whilst the shaft is still rotating. If the motor now runs normally, the start capacitor has failed.) Replace the start capacitor.

## Extractor cuts out whilst running

Overheating. This extractor has a maximum running time of 2 hours. Do not exceed this as excessive heat will permanently damage the motor. Leave the motor to cool and try again.


# Declaration of Conformity

Charnwood Declare that Woodworking Dust Collector, Model DE550AUTO

Conforms with the following Directives: Machinery Directive 2006/42/EC  
EMC Directive 2014/30/EC

And further conforms to the machinery example for which the EC type examination Certificate No. AM 50543191 and AE 50543540 have been issued by TUV Rheinland LGA Products GmbH, Tillystrasse 2, 90431, Nurnberg, Germany.

I hereby declare that equipment named above has been tested and found to comply with the relevant sections of the above referenced specifications. The machinery complies with all essential requirements of the directives.

Signed:  Dated: 22/05/2026 Location: Leicestershire

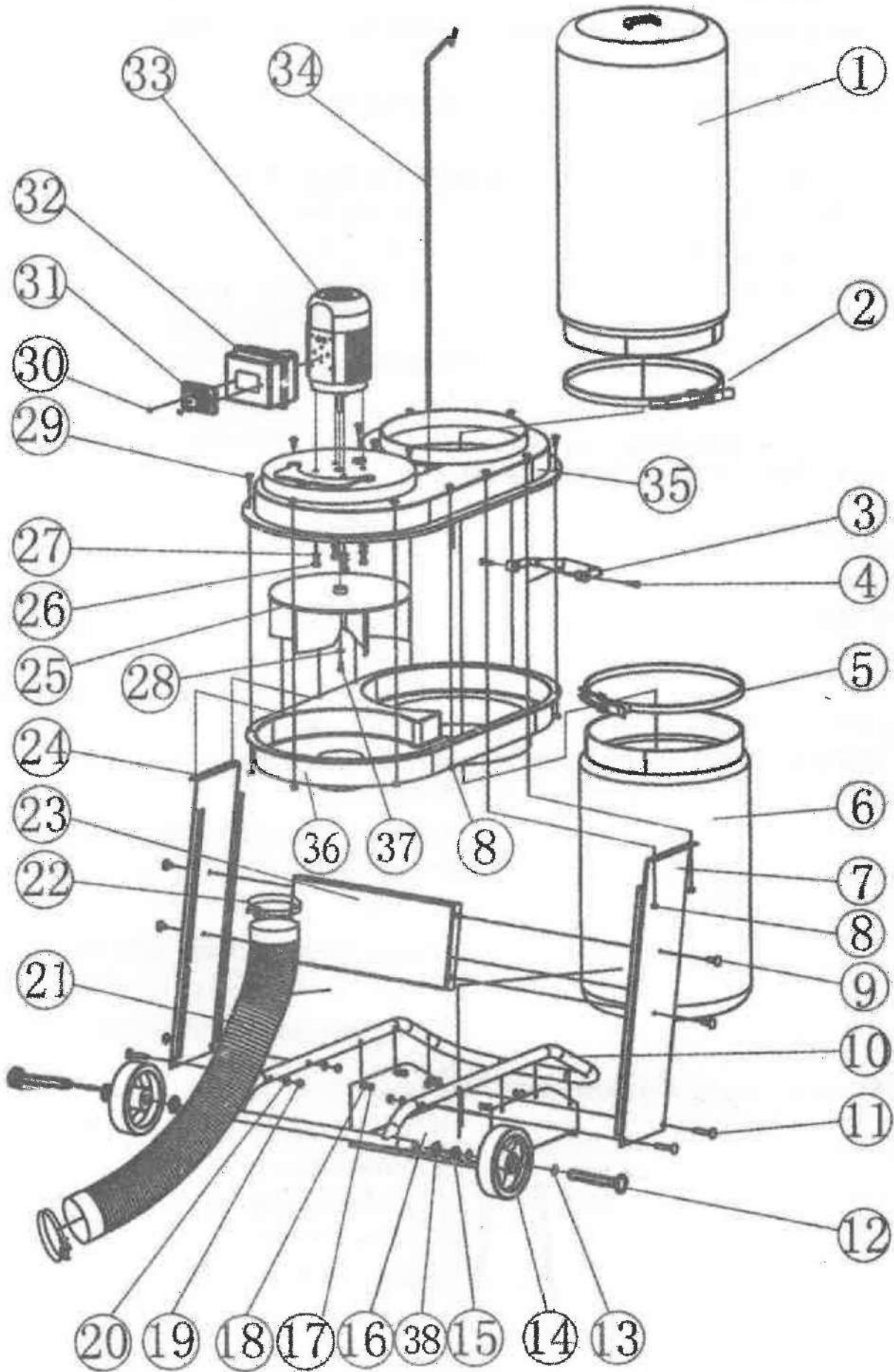
Richard Cook, Director



# Charnwood DE550AUTO Parts List

<b>Part Number</b>	<b>Description</b>	<b>Part Number</b>	<b>Description</b>
DE550AUTO#01	FILTER BAG	DE550AUTO#21	100MM DIAMETER HOSE
DE550AUTO#02	FILTER BAG CLAMP	DE550AUTO#22	100MM HOSE CLAMP
DE550AUTO#03	HANDGRIP	DE550AUTO#23	HORIZONTAL PLATE
DE550AUTO#04	SCREW 4.8 X 30	DE550AUTO#24	RIGHT SIDE PANEL
DE550AUTO#05	COLLECTION BAG CLAMP	DE550AUTO#25	FAN
DE550AUTO#06	COLLECTION BAG	DE550AUTO#26	M8 X 12MM BOLT
DE550AUTO#07	LEFT SIDE PANEL	DE550AUTO#27	M8 WASHER
DE550AUTO#08	M5 NUT	DE550AUTO#28	M6 WASHER
DE550AUTO#09	COACH BOLT M8 X 12MM	DE550AUTO#29	M5 X 16MM COACH BOLT
DE550AUTO#10	BASE FRAME	DE550AUTO#30	SCREW
DE550AUTO#11	COACH BOLT M8 X 40MM	DE550AUTO#31	SWITCH DKLD AN01-3
DE550AUTO#12	SCREW M10 X 75MM	DE550AUTO#32	SWITCH BOX
DE550AUTO#13	M10 WASHER	DE550AUTO#33	MOTOR 550w/240v/50hz
DE550AUTO#14	WHEEL	DE550AUTO#34	FILTER BAG SUPPORT
DE550AUTO#15	M10 NUT	DE550AUTO#35	UPPER HOUSING
DE550AUTO#16	BASE PLATE	DE550AUTO#36	LOWER HOUSING
DE550AUTO#17	M5 X 6MM SCREW	DE550AUTO#37	M6 X 16MM SCREW
DE550AUTO#19	M8 NUT	DE550AUTO#38	M10 WASHER
CAP10UF450V	MOTOR START CAPACITOR		

# CHARNWOOD DE550AUTO EXPLODED VIEW DIAGRAM





*Woodworking machinery at its best!*

Updated May 2026

**Charnwood, Cedar Court, Walker Road,  
Hilltop Industrial Estate, Bardon Hill, Leicestershire, LE67 1TU**

**Tel. 01530 516 926  
email: [sales@charnwood.net](mailto:sales@charnwood.net) website: [www.charnwood.net](http://www.charnwood.net)**