



Woodworking machinery at its best!

BELT & DISC SANDER OWNERS MANUAL

MODEL: BD48



CE

**Charnwood Machinery Ltd, Cedar Court, Walker Road,
Bardon Hill, Leicestershire, LE67 1TU**

Tel. 01530 516 926

email: sales@charnwood.net website: www.charnwood.net

GENERAL SAFETY RULES



WARNING: Do not attempt to operate the machine until you have read thoroughly and understood completely all instructions, rules, etc. contained in this manual. Failure to comply may result in accidents involving fire, electric shock, or serious personal injury. Keep this owner's manual and review frequently for continuous safe operation.

1. Know your machine. For your own safety, read the owner's manual carefully. Learn its application and limitations, as well as specific potential hazards pertinent to this machine.
2. Make sure all tools are properly earthed.
3. Keep guards in place and in working order. If a guard must be removed for maintenance or cleaning, make sure it is properly replaced before using the machine again.
4. Remove adjusting keys and spanners. Form a habit of checking to see that the keys and adjusting spanners are removed from the machine before switched it on.
5. Keep your work area clean. Cluttered areas and workbenches increase the chance of an accident.
6. Do not use in dangerous environments. Do not use power tools in damp or wet locations, or expose them to rain. Keep work areas well illuminated.
7. Keep children away. All visitors should be kept a safe distance
8. from the work area.
9. Make workshop childproof. Use padlocks, master switches and remove starter keys.
10. Do not force the machine. It will do the job better and be safer at the rate for which it is designed.
11. Use the right tools. Do not force the machine or attachments to do a job for which they are not designed. Contact the manufacturer or distributor if there is any question about the machine's suitability for a particular task.
12. Wear proper apparel. Avoid loose clothing, gloves, ties, rings, bracelets, and jewellery which could get caught in moving parts. Non-slip footwear is recommended. Wear protective hair covering to contain long hair.
13. Always use safety glasses. Normal spectacles only have impact resistant lenses. They are not safety glasses.
14. Do not over-reach. Keep proper footing and balance at all times.
15. Maintain the machine in good condition. Keep the machine clean for best and safest performance. Follow instructions for lubrication and changing accessories.
16. Disconnect the machine from power source before servicing and when changing the blade.
17. Never leave the machine running unattended. Turn the power off. Do not leave the machine until it comes to a complete stop.
18. Do not use any power tools while under the effects of drugs, alcohol or medication.
19. Always wear a face or dust mask if operation creates a lot of dust and/or chips. Always operate the tool in a well ventilated area and provide for proper dust removal. Use a suitable dust extractor.



Risk of Injury.
Never reach into
a moving part



Wear Eye
Protection



Wear Ear
Protection

Overview of BD48 Belt & Disc Sander



Specification

Disc Diameter	200mm (8")
Disc Speed	2850rpm
Belt Size	100mm x 915mm (4" x 36")
Belt Speed	550m/min
Motor (Induction) 240v 50hz	500w (0.67hp)
Weight	21.5kg
Manufacturer's Warranty	1 year
Rating	Hobby

Rating Description

Hobby: Suitable for Weekend DIY'ers and woodworking enthusiasts.

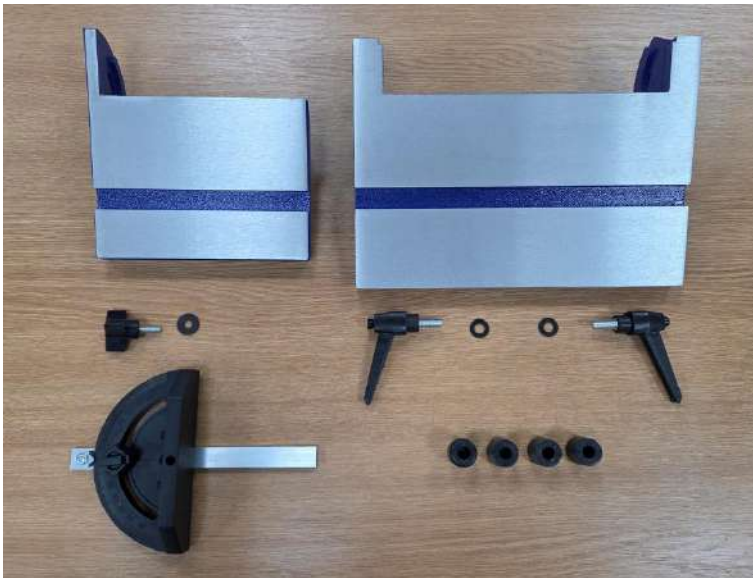
Generally lighter weight machines with lower power ratings and smaller tooling capacities. Typically only ever used by one person for short periods of time or longer periods of time infrequently. Machinery should be well maintained in a clean, dry environment such as a home workshop, garage or timber shed. **Expected maximum use of 100 hours annually.**

Please Note: Using a product in excess of its rating will void the manufacturer's free warranty.

Unpacking

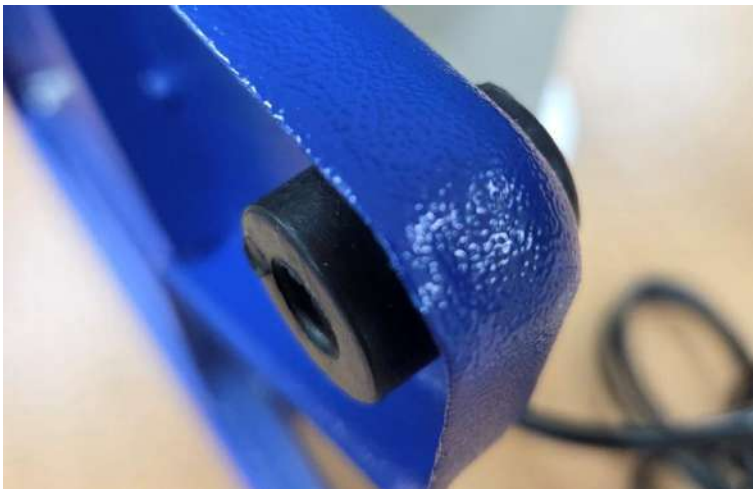


All items are contained in one carton.



Unpack the loose items and check that all are present.

Assembly



Fit The 4 Rubber Feet

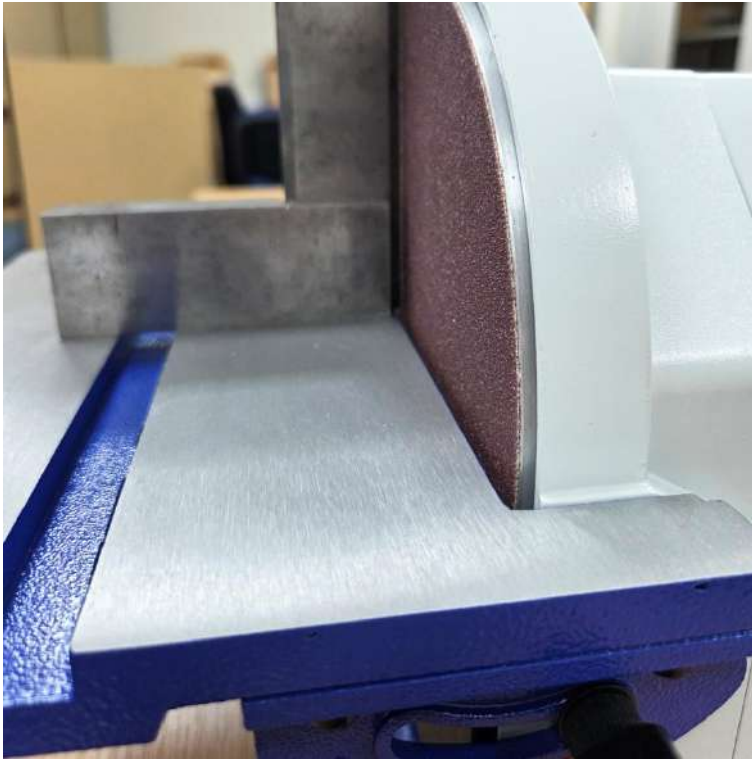
Insert the rubber foot into the base. The foot has a recess which the base locates into, to secure it in place.

Squeeze the rubber to deform it or use a small screwdriver to ease it into position.



Fit The Sanding Disc Table

Attach the table using a locking handle and washer on each side of the table.



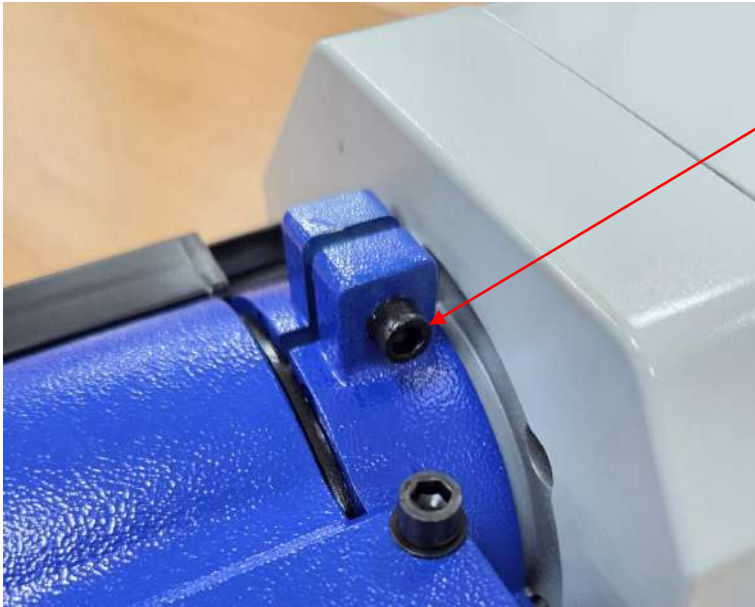
Set The Sanding Disc Table

Using a set square ensure that the table is at 90 degrees to the sanding disc and lock both handles.



Set The Angle Pointer

If necessary, use a screw driver to adjust the red pointer to align with the zero degree mark on the angle scale.

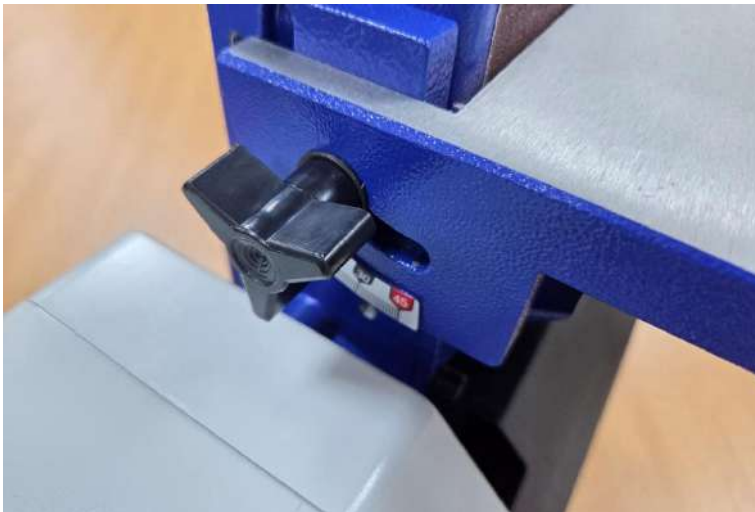


Raise The Sanding Belt

Use a 5mm Hex key to loosen the locking collar screw.

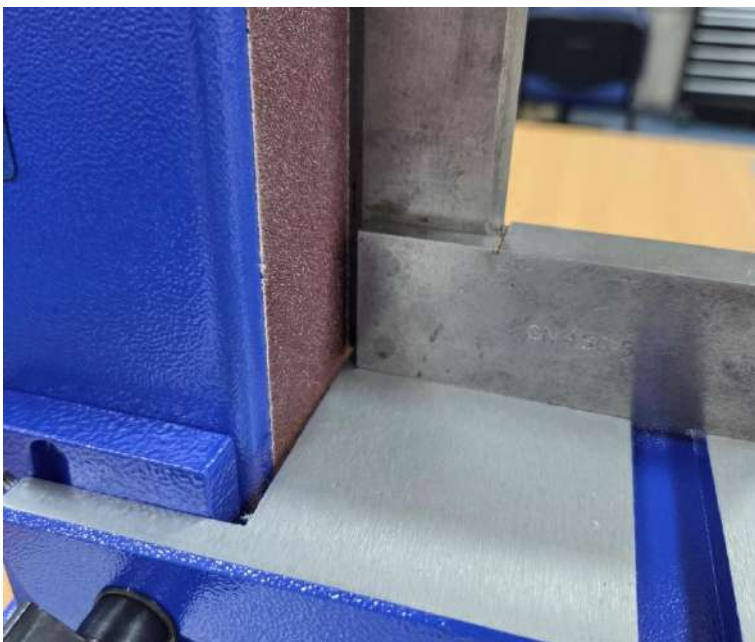
Raise the belt bed into a vertical position.

Re-tighten the screw.



Fit The Sanding Belt Table

Attach the table using a locking knob and washer.



Set The Sanding Belt Table

Using a set square ensure that the table is at 90 degrees to the sanding belt and tighten the knob.



Set The Angle Pointer

If necessary, use a screw driver to adjust the red pointer to align with the zero degree mark on the angle scale.

Setting Up The Sander



Tracking The Sanding Belt

Isolate from the power supply. Slowly rotate the sanding belt in the direction of the arrow.

If the belt starts to wander off to one side, use the tracking adjuster to correct it. Make a small adjustment of a 1/4 turn and test again.

If the belt moves towards the sanding disc: Turn the adjuster clockwise.



Dust Extraction Outlet

It is strongly recommended that the sander is connected to a Vacuum or Dust Extractor.

A selector switch is used to choose between the 2 functions.

To move the selector: Press in and rotate.



Connect A Suitable Hose

The dust outlet has an outside diameter of 63mm.

An extractor hose with 65mm (2.5") internal diameter will fit directly on and can be secured with a hose clamp.

Product Codes:
65FLEX Flexible Hose
65HC Hose Clamp



Fit A Reducer

If your extractor uses 100mm diameter hose, first fit a flexible cuff and a reducer to convert it.

Product Codes:
63FC Flexible Cuff
100/63RC Reducer



Fit A Magnetic System

If you have several machines which need extraction, a magnetic connection system is a convenient way to achieve fast change overs.

Product Codes:
MAGCUFF63 Magnetic Ring

Using The Sander

This sander is designed for use with wood and wood-based products only. It should not be used for sanding metal and any such use would invalidate the warranty.



Horizontal Belt Sanding

The belt sander can be used in the horizontal position without the work table fitted.

The back stop can serve as a surface to work against.

To Avoid scratch marks keep the workpiece moving across the belt.

Do not use excessive pressure and take extra care when sanding thin material.



Sanding Curved Profiles

The idler drum end of the sanding belt can be used for smoothing & shaping the inside of curved workpieces.

Never present the end of a workpiece to the drum as this can cause it to kick back.

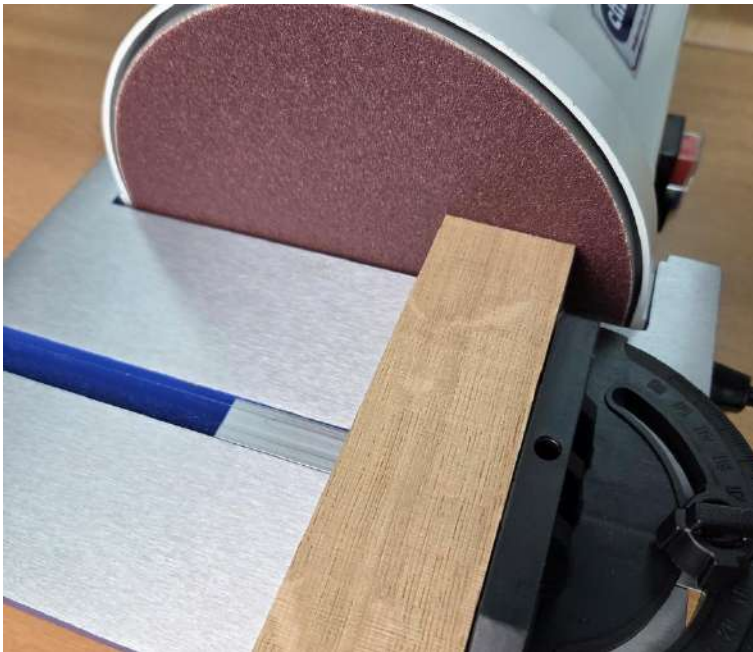


Vertical Belt Sanding

Sometimes sanding on the belt is more convenient with it positioned vertically. Always fit the work table when operating in this position.

To Avoid scratch marks, move the workpiece across the belt.

The mitre guide can also be used to allow accurate finishing of mitres.



Disc Sanding

The disc sander is ideally suited to smoothing end grain and fine-tuning angled cuts with the aid of the mitre guide.

Whenever possible use the front half of the exposed disc as this will hold the workpiece against the table.

If it is necessary to use the full width of the disc, care must be taken to hold the workpiece firmly as the rear half will tend to cause it to lift.

Keep the workpiece moving to achieve the best finish.

Maintenance



Replacing The Sanding Disc

Always ensure the machine is disconnected from the power supply before changing the sanding disc.

Remove the sanding disc table and then the disc cover which is secured with six screws.



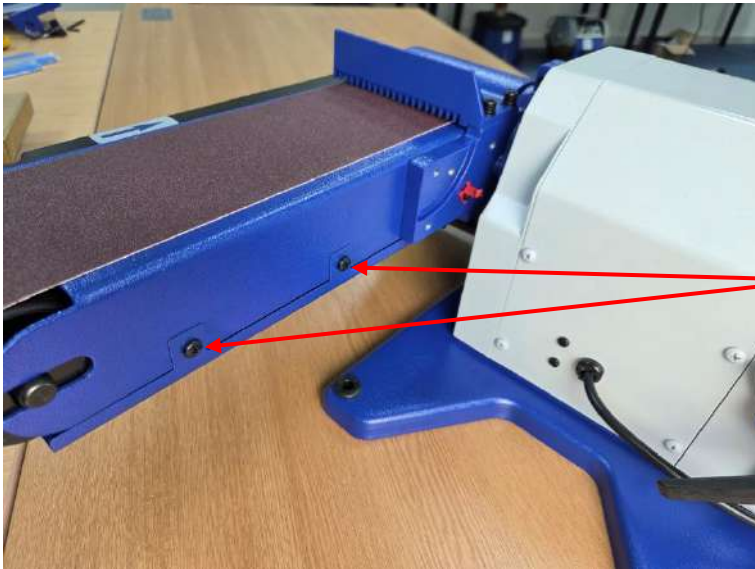
Remove The Used Disc

The sanding material is held onto the backing plate by adhesive. Carefully remove the existing self-adhesive sanding disc with the aid of a flat bladed scraper.

Remove any adhesive residue from the backing plate using methylated spirit.

Peel the backing from the new sanding disc and apply firmly to the backing plate.

We recommend converting the disc to Hook & Loop fixing, using our conversion backing pad VB300. Once that is fitted loop backed sanding discs can be used unlocking the ability to switch between grit sizes. Part worn discs can also be refitted.

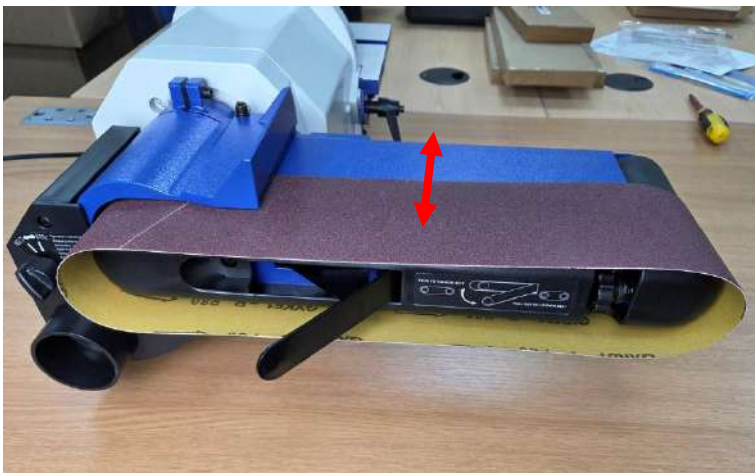


Replacing The Sanding Belt

Remove the sanding belt worktable.

Lower the belt to the horizontal position.

Loosen 2 screws and slide off the cover on the underside of the belt.



Release the tension on the sanding belt by pulling out the tension lever.

Remove the belt by pulling it out over the two rollers.

When fitting the new belt ensure that the arrow on the inside of the belt corresponds to the direction of travel marked on the machine.

Once in place, push the tension lever back in, replace the cover.

Check the tracking and adjust if necessary.

Troubleshooting

Problem	Cause	Remedy
Machine does not start	Blown House Fuse	Replace Fuse
	Loose switch terminal	Inspect back of switch
	Faulty switch	Replace switch
	Failed Motor	Replace Motor
Only starts when Green button is held down	Faulty switch	Replace switch
Machine Slows Down when Sanding	Operator applying too much pressure to work Piece	Use less pressure when applying work piece to sanding surface
Sanding Belt Runs Off Pulleys	Not tracked correctly	Adjust sanding belt tracking
Wood burns while sanding	Sanding surface clogged	Clean or replace disc or belt
	Excessive pressure being applied to work piece	Use less pressure when applying work piece to sanding surface
Motor overheats	Motor overloaded	Allow to cool, restart with reduced load



Please dispose of packaging for the product in a responsible manner. It is suitable for recycling. Help to protect the environment, take the packaging to the local amenity tip and place into the appropriate recycling bin.



Only for EU countries

Do not dispose of electric tools together with household waste material!

In observance of European Directive 2002/96/EC on waste electrical and electronic equipment (EEE) and its implementation in accordance with national law, electric tools that have reached the end of their life must be collected separately and returned to an environmentally compatible recycling facility.

Your local refuse amenity will have a separate collection area for EEE goods

Declaration of Conformity

Charnwood Declare that Belt & Disc sander, Model BD48

Conforms with the following Directives: Machinery Directive 2006/42/EC
EMC Directive 2014/30/EU

And further conforms to the machinery example for which the EC type examination Certificate No. AM 50413122 and AE 50392019 have been issued by TUV Rheinland LGA Products GmbH, Tillystrasse 2, 90431 Nurnberg, Germany.

I hereby declare that equipment named above has been tested and found to comply with the relevant sections of the above referenced specifications. The machinery complies with all essential requirements of the directives.

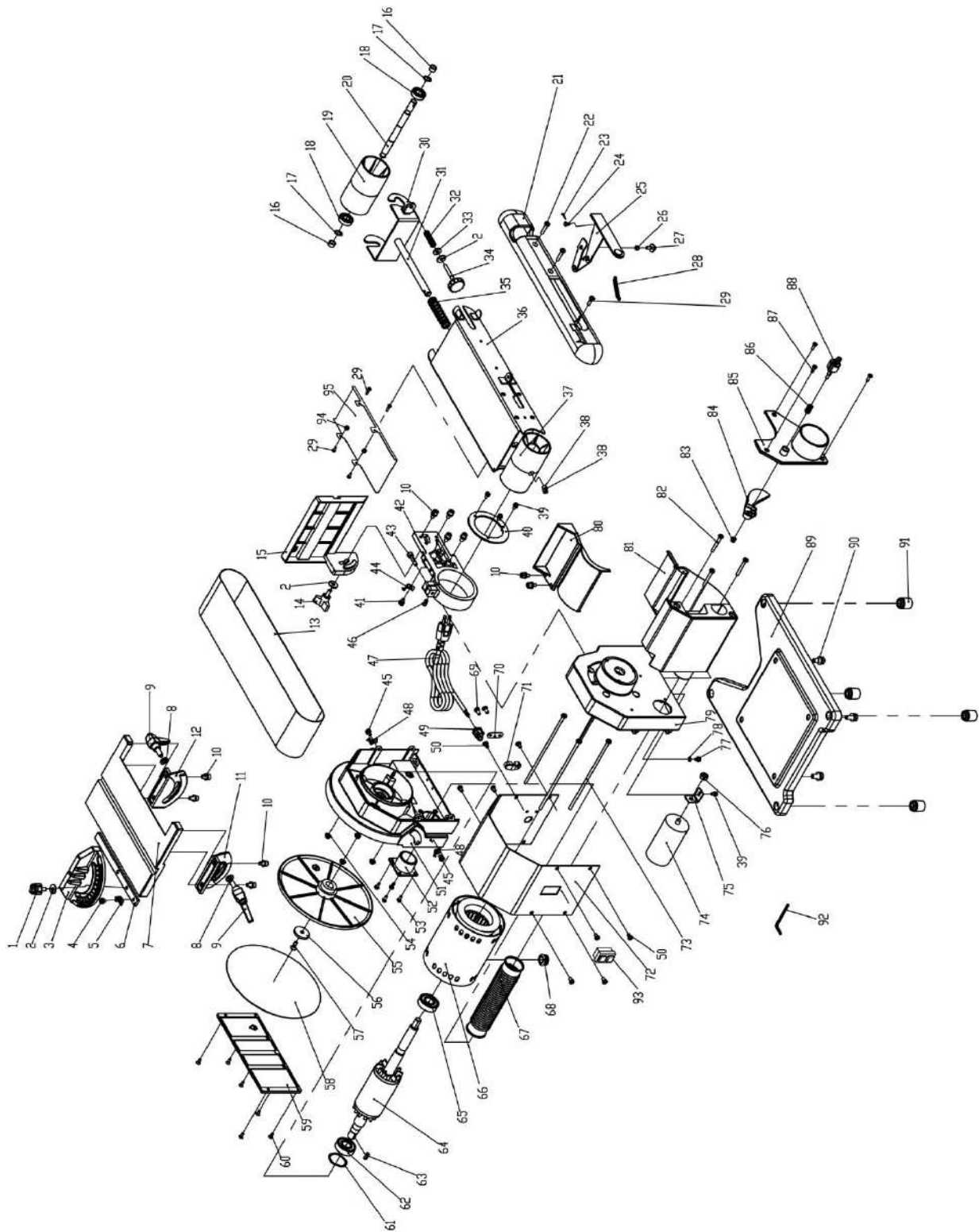
Signed: 

Dated: 04/04/2026

Location: Leicestershire

Richard Cook, Director

Charnwood BD48 Parts Drawing



Charnwood BD48 Parts List

No.	Part Ref.	Description	No.	Part Ref.	Description
1	#201	Mitre Gauge Knob	2	#202	Big Washer D6
3	#203	Mitre Gauge	4	#204	Philips Screw M5 x 8
5	#205	Mitre Gauge Pointer	6	#206	Mitre Gauge Bar
7	#207	Disc Work Table	8	#208	Flat Washer D8
9	#209	Handle Assembly	10	#210	Inner Hex Screw
11	#211	Disc Right Support	12	#212	Disc Left Support
13	#213	Sanding Belt 100mm x 915mm	14	#214	Disc Work Table Knob
15	#215	Belt Working Table	16	#216	Idler Shaft
17	#217	Spring Washer D12	18	#218	Bearing 6001RZ
19	#219	Idler Pulley	20	#220	Idler Shaft
21	#221	Belt Cover	22	#222	Philips Screw M5 x 25
23	#223	Pin	24	#224	Screw
25	#225	Tension Handle	26	#226	Washer
27	#227	Screw	28	#228	Connection Plate
29	#229	Screw	30	#230	Belt Tension Assembly
31	#231	Rod	32	#232	Adjust Spring
33	#233	Rubber Washer	34	#234	Belt Tracking Knob
35	#235	Tension Spring	36	#236	Belt Frame
37	#237	Drive Pulley	38	#238	Inner Hex Screw M8 x 12
39	#239	Screw	40	#240	Support Locating Plate
41	#241	Screw	42	#242	Belt Frame Connect
43	#243	Inner Hex Screw M6 x 25	44	#244	Washer
45	#245	Screw	46	#246	Washer
47	#247	Power Cord	48	#248	Washer
49	#249	Strain relief	50	#250	Screw
51	#251	Left End Cap	52	#252	Tube Connector
53	#253	Screw	54	#254	Nut
55	#255	Disc Plate	56	#256	Washer
57	#257	Philips Screw M6 x 16	58	#258	Sanding Disc
59	#259	Disc Cover	60	#260	Philips Screw M4x10
61	#261	Spring Washer D40	62	#262	Bearing 6203RZ
63	#263	Key	64	#264	Rotor
65	#265	Bearing 6203RZ	66	#266	Stator
67	#267	Connect Tube	68	#268	Small Pulley
69	#269	Screw	70	#270	Strain Relief
71	#271	Strain Relief Plate	72	#272	Motor Cover
73	#273	Philips Screw M5 x 180	74	#274	Capacitor 12uf, 450V
75	#275	Capacitor Support	76	#276	Hex nut M8
77	#077	Screw	78	#078	Washer
79	#079	End Cap	80	#080	Top Cover
81	#081	Lower Cover	82	#082	Screw
83	#083	Nut	84	#084	Divertor
85	#085	Dust Box Cover	86	#086	Shaft
87	#087	Screw	88	#088	Selector
89	#089	Base	90	#090	Flat Washer D4
91	#091	Rubber Foot	92	#092	Service Tools



Woodworking machinery at its best!

Updated June 2026

**Charnwood Machinery Ltd, Cedar Court, Walker Road,
Hilltop Industrial Estate, Bardon Hill, Leicestershire, LE67 1TU, England**

**Tel. 01530 516 926
email: sales@charnwood.net website: www.charnwood.net**