

charnwood

Woodworking machinery at its best!

PLANER THICKNESSER OWNERS MANUAL MODEL: PT10E2S



CE

Charnwood Machinery, Cedar Court, Walker Road, Hilltop Industrial Estate,
Bardon Hill, Leicestershire, LE67 1TU

Tel. 01530 516 926

email: sales@charnwood.net website: www.charnwood.net

GENERAL SAFETY RULES



WARNING: Do not attempt to operate the machine until you have read thoroughly and understood completely all instructions, rules, etc. contained in this manual. Failure to comply may result in accidents involving fire, electric shock, or serious personal injury. Keep this owner's manual and review frequently for continuous safe operation.

1. Know your machine. For your own safety, read the owner's manual carefully. Learn its application and limitations, as well as specific potential hazards pertinent to this machine.
2. Make sure all tools are properly earthed.
3. Keep guards in place and in working order. If a guard must be removed for maintenance or cleaning, make sure it is properly replaced before using the machine again.
4. Remove adjusting keys and spanners. Form a habit of checking to see that all keys and adjusting spanners are removed from the machine before switched it on.
5. Keep your work area clean. Cluttered areas and workbenches increase the chance of an accident.'
6. Do not use in dangerous environments. Do not use power tools in damp or wet locations, or expose them to rain. Keep work areas well illuminated.
7. Keep children away. All visitors should be kept a safe distance from the work area.
8. Make workshop childproof. Use padlocks, master switches and remove starter keys.
9. Do not force the machine. It will do the job better and be safer at the rate for which it is designed.
10. Use the right tools. Do not force the machine or attachments to do a job for which they are not designed. Contact the manufacturer or distributor if there is any question about the machine's suitability for a particular task.
11. Wear proper apparel. Avoid loose clothing, gloves, ties, bracelets, and jewellery which could get caught in moving parts. Non-slip footwear is recommended. Wear protective hair covering to contain long hair.
12. Always use safety glasses. Normal spectacles only have impact resistant lenses. They are not safety glasses.
13. Do not over-reach. Keep proper footing and balance at all times.
14. Maintain the machine in good condition. Keep the machine clean for best and safest performance. Follow instructions for lubrication and changing accessories.
15. Disconnect the machine from power source before servicing and when changing the blade.
16. Never leave the machine running unattended. Turn the power off. Do not leave the machine until it comes to a complete stop.
17. Do not use any power tools while under the effects of drugs, alcohol or medication.
18. Always wear a face or dust mask if operation creates a lot of dust and/or chips. Always operate the tool in a well ventilated area and provide for proper dust removal. Use a suitable dust extractor.

ADDITIONAL RULES FOR PLANER/THICKNESSERS

1. This machine is designed for use with wood. Attempting to plane or thickness any other materials will result in damage to the machine, potential fire risk and/or health hazards.

2. The machine is designed for indoor use only.
3. Connection to a suitable dust extraction system is highly recommended. If you must use the machine on its own, you will need to stop it, unplug it from the mains and thoroughly clean it at regular intervals. Continuing to use the machine when it is clogged with shavings will result in damage to it, potential fire risk and/or health hazards.
4. The machine should only be used on the stand provided.
5. Always hold the work firmly on to the table, using push pads when necessary.
6. Never use the planer/thicknesser with the guard and/or dust hood removed.
7. If planing or thicknessing a long piece of timber, provide additional support at the same height as the table.
8. Switch the machine off and unplug it before removing any debris.
9. Be aware of the possibility of kickback.
10. Do not modify this machine in any way or use it or anything other than its designated purpose. Neither the manufacturer nor the suppliers will be liable for any damage or injury caused by incorrect assembly, operation or electrical connection of this machine.



Risk of Injury!
Never reach into
a running cutter block



**Wear Eye
Protection**



**Wear Ear
Protection**

Rating Description

Light Trade: Suitable for professional woodworkers where the machine will not be in daily use.

Mid range machines with a heavier build and more power. Typically used by 2 or 3 people within a small business and also for the dedicated hobbyist with a larger budget. It is expected to be used up to the machines maximum limit with occasional long work periods. Suitable for income generation. Expected maximum use of 300 hours annually.

Please Note: Using a product in excess of its rating will void the manufacturer's free warranty.

PT10E2S Specification

	PT10E2S
Motor (induction)	2200w (3hp)/240v/50hz
Recommended Breaker size	(Type C)
Planer width	257mm (10")
Maximum Depth of Cut Planer	3mm
Fence tilt	90 to 45°
Max. Depth of Cut Thicknesser	3mm
Thicknessing capacity	5mm to 225mm
Number of cutters	24 (2 X 12) TC
Cutter Size	15mm x 15mm x 2.5mm, R=150
Weight	170kg
Rating	Light Trade
Product Guarantee	5 Year

Unpacking



Open The Crate

This product is packed into 1 wooden crate.

To open the wooden crate:

Cut the vertical straps

Use a pry bar to release the nails around the base

Lift off the complete lid.



Remove Loose Items

Remove the plastic cover.

Remove all loose parts.

Remove the protective paper from the planing beds and clean the rust preventer from the table using WD40 or similar, and a soft cloth.



Unbolt From The Base

The machine is fixed to the pallet base with 4 bolts.

Use a 13mm spanner to undo the 3 securing nuts.

This part of the assembly requires 2 people:

Lift the machine off the pallet base.

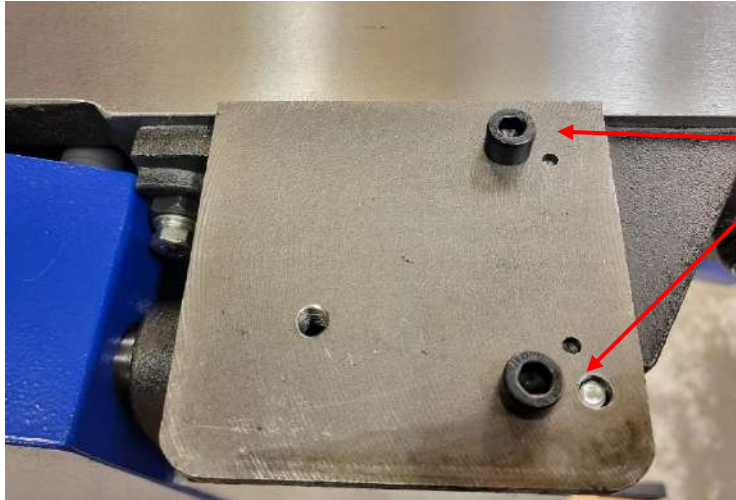
Do not dispose of any of the packaging until the machine has been completely assembled and tested.
In the unlikely event that the product needs to be returned, the original packaging will be required.

Identify The Loose Parts



Assembly

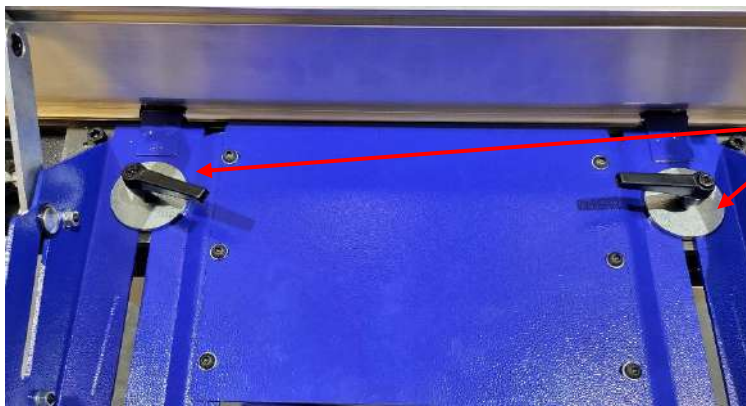
Remove the protective paper from the planing tables and clean the rust preventer from the table using WD40 or similar, and a soft cloth.



Fit The Fence Guide Bolts

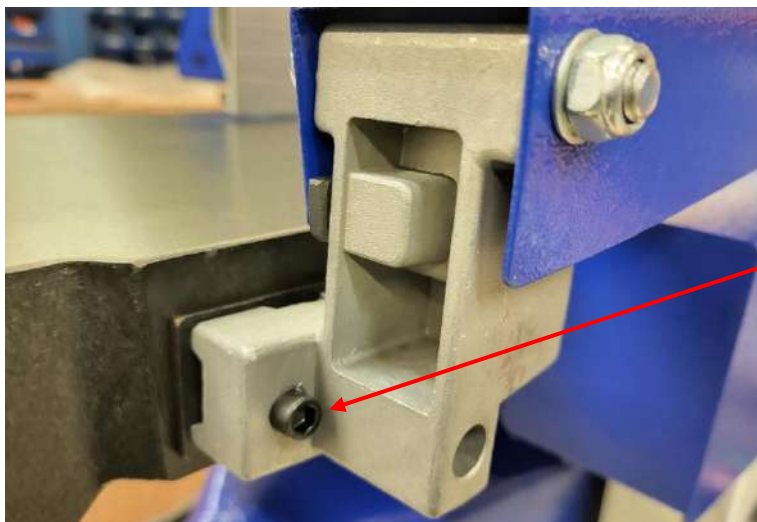
Fit the 4 off M8 x 10mm Cap head bolts

Secure with a 6mm Allen key



Fit the Fence

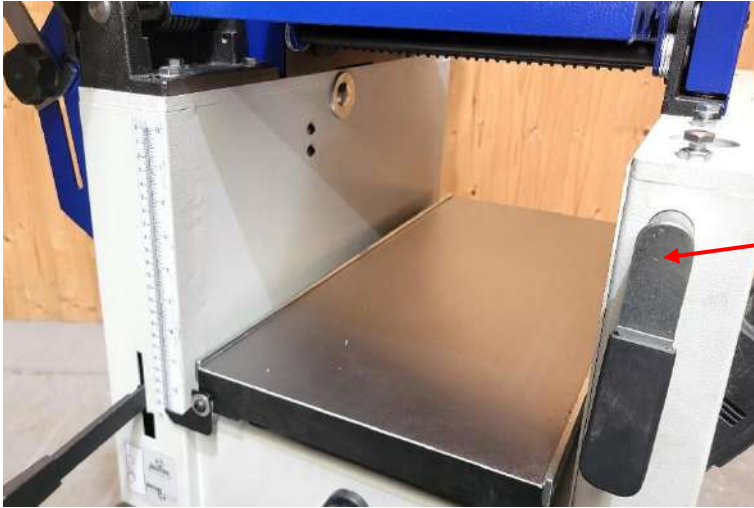
Fit the fence in between the 4 guide bolts and lock in place using the two large flat washers and two M8 locking levers.



Fit The Cutter Guard Support Arm

Hold the arm up against the side of the machine.

Attach to the table using 2 off M6 caphead bolts.



Clean The Thickening Table

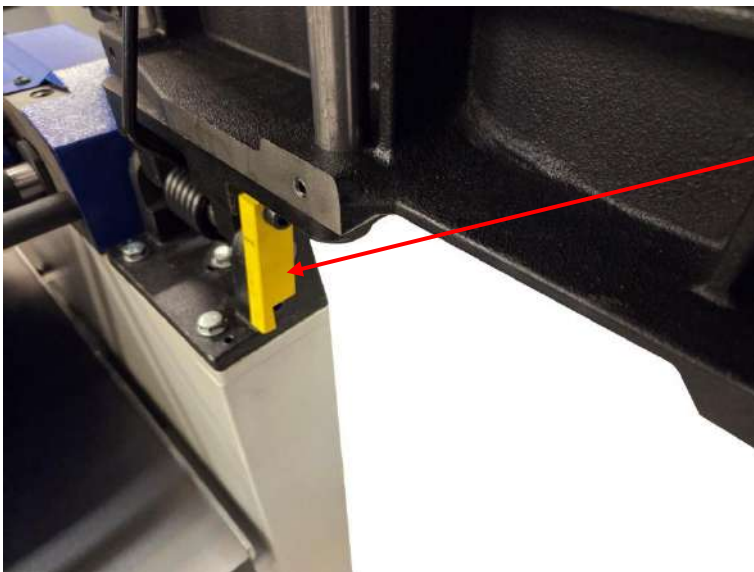
To access the thickening table.

Unlock the planing beds:

There are 2 locking handles, one for each bed.

Pull the handle towards you, then slide it out, away from the cutters, by 25mm then release.

Use the lifting handle to raise the beds into a vertical position. They will automatically lock into that position.



Automatic Bed Lock

Swing the extractor hood over cutter block

Remove the protective paper and clean the rust preventer from the table using WD40 or similar, and a soft cloth.



Rubber Feed Roller

Flip the dust hood back over to give access to the rubber feed roller.

Remove the protective plastic film from the rubber outfeed roller.

Using the Planer Thicknesser

PLANING MODE

Side Fence

Cutter Guard Height Adjuster

Outfeed Table

Cutter Guard Lock

Lifting Handle

Planing Bed Lock

On / Off Switch

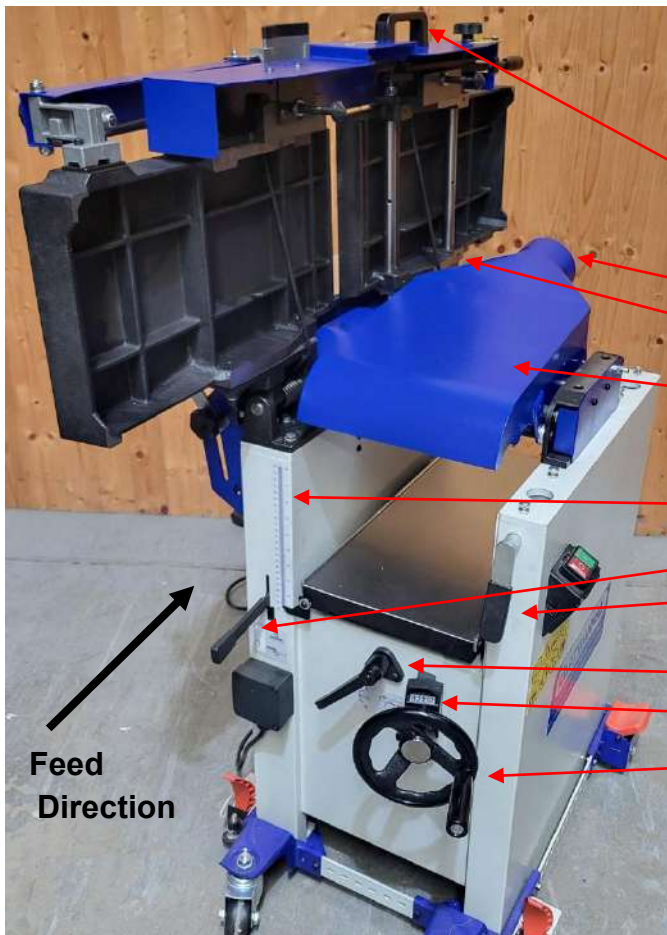
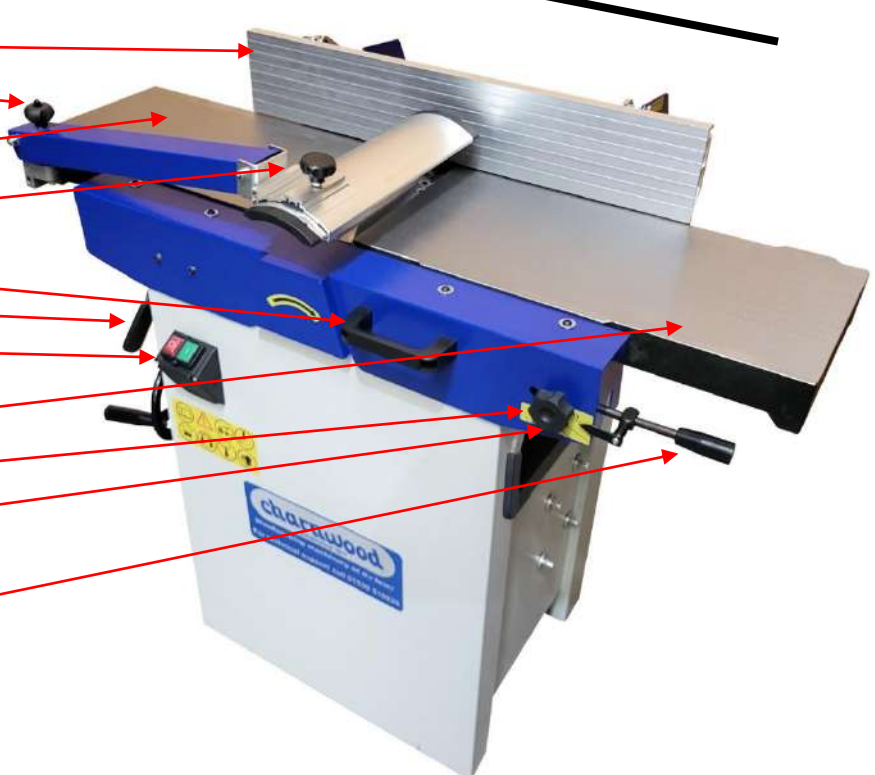
Infeed Table

Infeed Table Lock

Planing Depth Scale

Planing Depth Adjuster

Feed Direction



THICKENING MODE

Lifting Handle

Dust Hose Connection

Planing Beds Release Catch

Extractor Hood

Thickening Scale

Drive Rollers Lever

Planing Bed Lock

Thickening Bed Height Lock

Digital Position Indicator

Thickening Bed Height Adjuster

Feed Direction

PLANING MODE

With the machine set up in planing mode:

Use the Cutter Guard Height Adjuster to adjust the height of the Cutter Guard, so that the work piece can fit underneath.

Set the Planing Depth Adjuster to the desired setting, reading off the Planing Depth Scale. If in doubt, set the depth to 0.5mm

Connect a dust extractor to the 100mm diameter outlet.

Start the machine, wait for it to get up to full speed.

Lay the work piece flat on the Infeed Table and push it over the cutter block. Use a push stick or push pad to ensure hands are kept well away from the cutters.

Pick up the work piece and return it to the starting position. Make as many passes as necessary to achieve a flat planed finish.

When planing taller pieces, over 60mm, undo the Cutter Guard Lock and slide the Cutter Guard away from the Side Fence just enough to provide clearance for the workpiece.

SWITCHING MODES

To move from planing mode to thicknessing mode:

Engage the drive rollers by moving the Drive Rollers Lever into the upper position.

Release the tables using the 2 Planing Bed Locks. Pull the handle towards you, then slide it out, away from the cutters, by 25mm then release.

Use the Lifting Handle to raise the tables into a vertical position. This process is spring assisted, but take care as the tables are heavy. The tables are automatically locked in the vertical position.

Swing the Extractor Hood up and over the cutter block, until it clicks into place.

THICKNESSING MODE

With the machine set up in Thicknessing mode:

Measure the thickness of the work piece.

Rotate the Thicknessing Bed Height Adjuster anti-clockwise to unlock the thicknessing bed.

Wind the Thicknessing Bed Height Adjuster handwheel clockwise to raise the thicknessing bed.

1 rotation is equal to 2mm adjustment.

Read off the scale or use the Digital Position Indicator, with accuracy down to 0.1mm, to set the bed at the starting thickness. Then raise the bed another 1 – 2.5mm, depending on how much stock is to be removed.

Tighten the Thicknessing Bed Height Lock.

The feed direction is the opposite direction to planing mode.

Start the machine, wait for it to get up to full speed.

Lay the work piece flat on the end of the table. Slide it forward until you feel the drive rollers take it from you. Let go of the work piece and walk to the other end of the machine to support the work piece as it is fed out of the thicknesser.

A safety bar will prevent you from trying to make too big a cut. If the timber hits the safety bar, lower the table to take a smaller cut.

Make as many passes as necessary to get the desired finished dimension.

If making multiple components, consistency is best achieved by feeding them all through at one depth, before adjusting the table height and feeding them all through again.

SWITCHING MODES

To move from thicknessing mode to planing mode:

Disengage the drive rollers by moving the Drive Rollers Lever into the lower position.

Use the handwheel to lower the thicknessing bed.

Release the extractor hood from the retaining pin and swing the Dust Hood underneath the cutter block.

With one hand on the lifting handle to support the weight, pull the yellow release catch, lower the thicknessing bed all the way down.

The weight is supported by springs, but take care as they are heavy and will drop if not supported. Lock the tables in place with the 2 Planing Bed Locks.

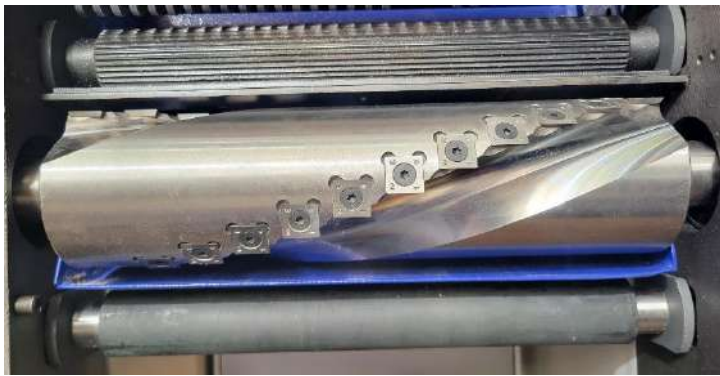
General Guide

When faced with a rough sawn piece of timber which requires planing on all 4 sides and taking down to a specific finished dimension, follow this guide:



- Set the machine up for planing.
- Identify the flattest of the two wider faces on the timber. (Face 1 on diagram)
- Pass that side over the planer as many times as necessary until a flat and smooth finish is achieved.
- Hold the planed side firmly against the side fence and pass the narrow side (Face 2 on diagram) over the planer as many times as necessary until a flat and smooth finish is achieved.
- You should now have two planed sides at 90 degrees to each other.
- Set the machine up for thicknessing.
- Pass the timber through the thicknesser with the wider already planed side (Face 1 on diagram) facing down against the bed. Continue until the desired thickness for the timber is reached.
- Finally, pass the timber through the thicknesser with the planed narrow side (Face 2 on diagram) facing down against the bed. Continue until the desired thickness for the timber is reached.

Cutter Replacement



Disconnect the machine from the supply

The cutter block is fitted with 2 rows of Tungsten carbide cutters, 11 in 1 row and 12 in the other.

Each cutter has 4 sides and 4 cutting edges.

A cutter can be rotated by 90 degrees to a new position to renew the cutting edge.



Each corner is numbered so you can keep track of which edge has already been used.

If one edge becomes damaged by a chip or nick, it can be rotated or replaced individually.

Eventually the cutters will become blunt and then the entire row should be rotated or replaced at the same time.



To change a cutter:

Rotate the cutterblock so the cutter to be changed is at the top of the arc.

Use a T20 Torx key to undo the locking screw.

Turn anticlockwise to undo.



Refit the cutter with a new edge uppermost.

The back edge of the cutter should fit tightly against the back stop on the cutter block.

Fit the locking screw and tighten it firmly.

Troubleshooting

Problem	Cause	Remedy
Machine does not start	Emergency stop activated	Twist to release the red emergency stop button
	Faulty switch	Replace switch
	Cutter Guard not fitted	Check the alignment of the micro switch
Only starts when Green button is held down	Faulty switch	Replace switch
MCB trips on Start up	MCB rating is too low	Replace with Type C 16amp
	Short circuit in cable or plug	Repair the damage
Machine hums but does not start	Start capacitor failed	Replace start capacitor
Cutter block runs at half speed, with lack of power	Run capacitor failed	Replace run capacitor
Motor running but cutter block is not rotating	Broken or stretched drive belt	Replace drive belt
Motor slows down during the cut	Depth of cut is too great	Take a smaller cut
	Dust & Chip collector hood is blocked	Clear the blockage and ensure the extractor is functioning correctly
	Cutters are blunt	Rotate or replace the cutters
Feed rollers slipping	Build up of dust and sap on the table	Clean the table
Long lines or ridges along the length of planed timber	Nicked or chipped cutters	Rotate or replace the cutters
Excessive snipe	Outfeed table is set too low	Align the outfeed table to the height of the cutter when at the top of its arc
	Operator pushing down on the trailing end of the timber	Eliminate downward pressure on trailing end
	Timber not supported as it leaves the planer	Support the timber as it leaves the outfeed end of the planer

Declaration of Conformity for CE Marking

Charnwood Declare that Woodworking Planer & Thicknesser, Models PT10E2S

Conforms with the following EU Directives: Machinery Directive 2006/42/EC
Electromagnetic Compatibility 2014/30/EU

And further conforms to the machinery example for which the EC type examination Certificate No. BM 50615803 & AE 50628327 have been issued by TUV Rheinland LGA Products GmbH, Tillystrasse 2, 90431, Nurnberg, Germany.

I hereby declare that equipment named above has been tested and found to comply with the relevant sections of the above referenced specifications. The machinery complies with all essential requirements of the directives.

Signed: 
Richard Cook, Director

Dated: 17/03/2026

Location: Leicestershire



Please dispose of packaging for the product in a responsible manner. It is suitable for recycling. Help to protect the environment, take the packaging to the local amenity tip and place into the appropriate recycling bin.



Only for EU countries

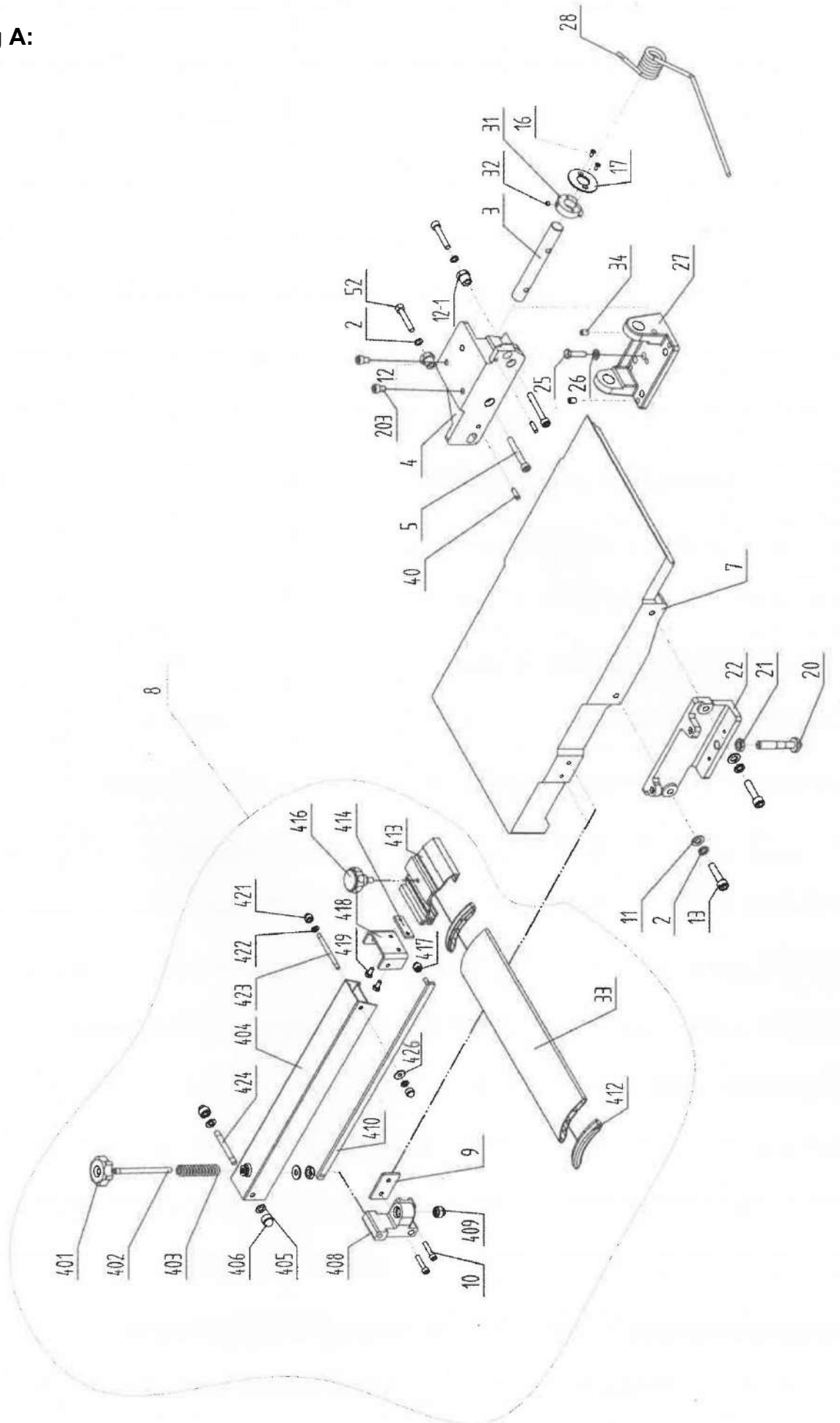
Do not dispose of electric tools together with household waste material!

In observance of European Directive 2002/96/EC on waste electrical and electronic equipment (EEE) and its implementation in accordance with national law, electric tools that have reached the end of their life must be collected separately and returned to an environmentally compatible recycling facility.

Your local refuse amenity will have a separate collection area for EEE goods

Charnwood PT10E2S Parts Diagrams

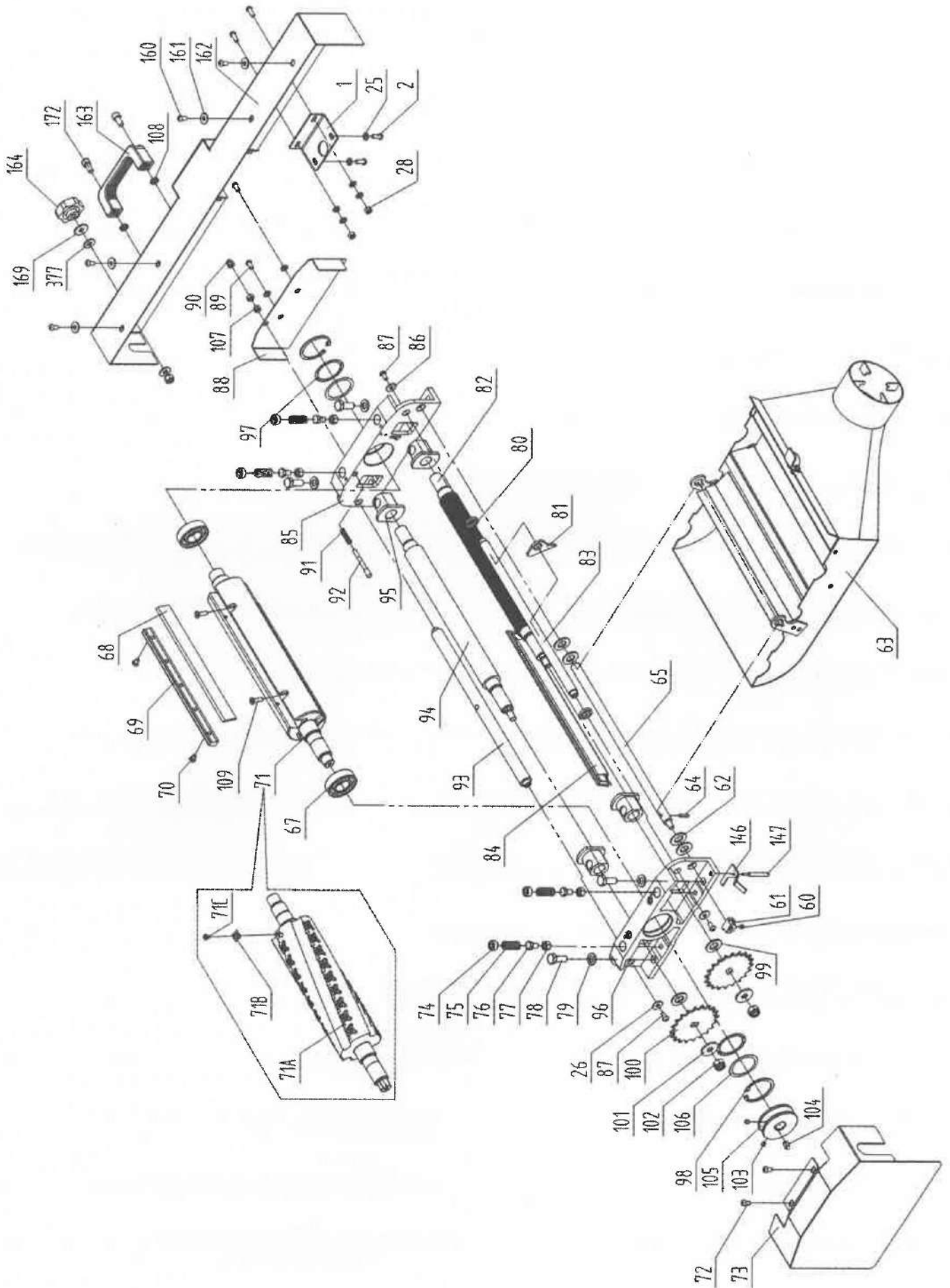
Drawing A:



Parts List A:

No.	Description	QTY.
PT10E2S#A002	SPRING WASHER	2
PT10E2S#A003	OUTFEED TABLE BRACKET SHAFT	1
PT10E2S#A004	OUTFEED TABLE BRACKET RIGHT	1
PT10E2S#A005	HEX SOCKET CAP SCREW M8X60	2
PT10E2S#A007	OUTFEED TABLE	1
PT10E2S#A008	CUTTERBLOCK GUARD ASSEMBLY	1
PT10E2S#A009	PLATE	1
PT10E2S#A010	HEX SOCKET CAP SCREW M6X30	2
PT10E2S#A011	WASHER 10MM DIA.	2
PT10E2S#A012	HEX BUSH	1
PT10E2S#A012-1	HEX BUSH	1
PT10E2S#A013	HEX SOCKET CAP SCREW M10X40	2
PT10E2S#A016	SCREW M4X10	2
PT10E2S#A017	LARGE WASHER	1
PT10E2S#A020	TABLE LOCKING SHAFT	1
PT10E2S#A021	HEX NUT M12	1
PT10E2S#A022	OUTFEED TABLE BRACKET LEFT	1
PT10E2S#A025	HEX BOLT M8X30	3
PT10E2S#A026	WASHER 8MM DIA.	5
PT10E2S#A027	OUTFEED TABLE SUPPORT	1
PT10E2S#A028	SPRING	1
PT10E2S#A031	BIG CAM WHEEL FOR SAFETY SWITCH	1
PT10E2S#A032	HEX SOCKET SET SCREW M6X6	1
PT10E2S#A033	CUTTERBLOCK GUARD PROFILE W/CAP	1
PT10E2S#A034	HEX SOCKET SET SCREW M8X12	5
PT10E2S#A040	PIN 6X20	4
PT10E2S#A052	HEX SOCKET SCREW M8X12	2
PT10E2S#A203	HEX SOCKET SCREW M8X10	2
PT10E2S#A401	LOCK KNOB	1
PT10E2S#A402	LEAD SCREW	1
PT10E2S#A403	SPRING	1
PT10E2S#A404	BRACKET FOR GUARD	1
PT10E2S#A405	WASHER M8 DIA.	3
PT10E2S#A406	LOCK NUT	2
PT10E2S#A408	LOCKING SUPPORT	1
PT10E2S#A409	HEX LOCK NUT M8	1
PT10E2S#A410	LONG SHAFT	1
PT10E2S#A412	FIXED PRESS PAW	2
PT10E2S#A413	GUARD PLATE COVER	1
PT10E2S#A414	LOCK PLATE	1
PT10E2S#A416	NYLON KNOB	1
PT10E2S#A417	LOCK NUT M6	1
PT10E2S#A418	BRACKET FOR GUARD	1
PT10E2S#A419	HEX BOLT M6X10	2
PT10E2S#A421	LOCK NUT M6	2
PT10E2S#A422	NYLON WASHER M6	2
PT10E2S#A423	SHAFT (M6)	1
PT10E2S#A424	SHAFT (M8)	1
PT10E2S#A426	WASHER M6	2

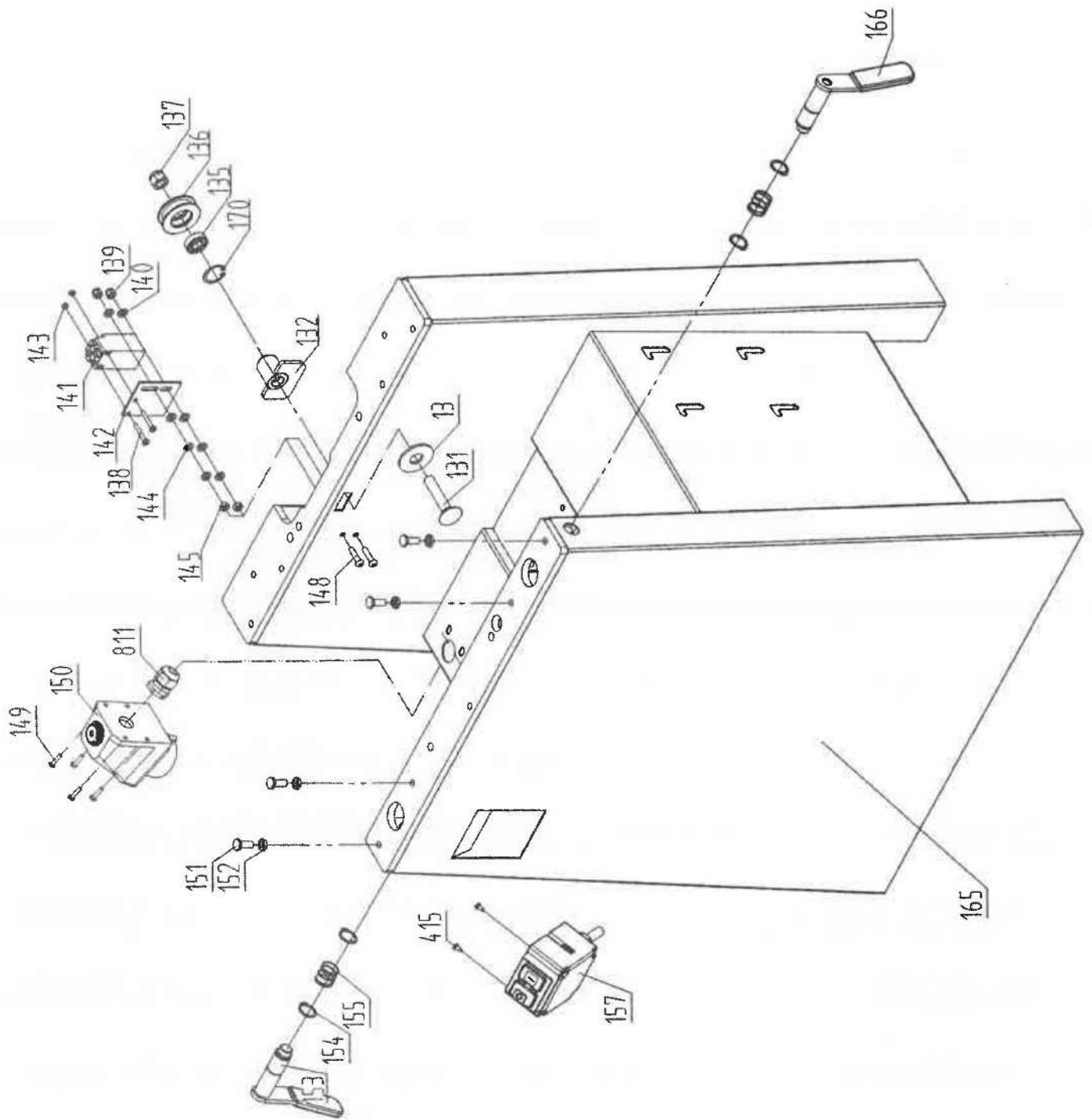
Drawing B:



Parts List B:

No.	Description	QTY.
PT10E2S#B001	COVER LINK PLATE	1
PT10E2S#B002	PANE HEAD SCREW M6	4
PT10E2S#B025	WASHER M6	6
PT10E2S#B026	LARGE WASHER M6	2
PT10E2S#B028	HEX NUT M6	2
PT10E2S#B029	RETAINED WASHER M5	2
PT10E2S#B031	PEN HEAD SCREW M5X8	3
PT10E2S#B060	HEW SOCKET SET SCREW M6X6	1
PT10E2S#B061	SMALL CAM WHEEL	1
PT10E2S#B062	WASHER M14	4
PT10E2S#B063	DUST COLLECTOR ASSEMBLY	1
PT10E2S#B064	ROLL PIN M5X18	1
PT10E2S#B065	SHAFT	1
PT10E2S#B067	BEARING 6205-2Z	2
PT10E2S#B071A	SPIRAL CUTTER BLOCK	1
PT10E2S#B071B	CUTTER	23
PT10E2S#B071C	CUTTER SCREW	23
PT10E2S#B072	PAN HEAD SCREW M6X12	2
PT10E2S#B073	BELT COVER	1
PT10E2S#B074	SCREW	4
PT10E2S#B075	SPRING	4
PT10E2S#B076	HEX BOLT M8X14	4
PT10E2S#B077	HEX THIN NUT M10X25	4
PT10E2S#B078	HEX BOLT M10X25	4
PT10E2S#B079	WASHER M10	4
PT10E2S#B080	SPACE WASHER	43
PT10E2S#B081	ANTI KICK BACK FINGER	33
PT10E2S#B082	INFEED ROLLER	1
PT10E2S#B083	ANTI KICKBACK SHAFT	1
PT10E2S#B084	CUTTERBLOCK COVER	1
PT10E2S#B085	CUTTERBLOCK BRACKET LEFT	1
PT10E2S#B086	LARGE WASHER M6	2
PT10E2S#B087	HEX SOCKET CAP SCREW M6X12	2
PT10E2S#B088	CUTTERBLOCK BRACKET COVER	1
PT10E2S#B089	PAN HEAD SCREW	2
PT10E2S#B090	CAP NUT	1
PT10E2S#B091	SPRING	1
PT10E2S#B092	PIN STOP FOR DUST COLLECTORE	1
PT10E2S#B093	SUPPORT ROD	1
PT10E2S#B094	OUTFEED ROLLER (RUBBER)	1
PT10E2S#B095	TUBE(METAL BUSHING)	4
PT10E2S#B096	CUTTERBLOCK BRACKET RIGHT	1
PT10E2S#B097	WAVE WASHER D52	2
PT10E2S#B098	RETAINING RING	2
PT10E2S#B099	WASHER M14	2
PT10E2S#B100	DRIVE CHAIN SPROCKET	2
PT10E2S#B101	LARGE WASHER M10	2
PT10E2S#B102	LOCK NUT M10	2
PT10E2S#B103	HEX SOCKET SET SCREW M6X6	2
PT10E2S#B104	KEY 6X16	2
PT10E2S#B105	SPINDLE PULLEY	1
PT10E2S#B106	WASHER	2
PT10E2S#B107	HEX NUT M6	2
PT10E2S#B108	HEX THIN NUT M8	2
PT10E2S#B109	HEX SOCKET PAN SCREW M6X20	6
PT10E2S#B146	SFAETY SWITCH ROCKER	1
PT10E2S#B147	SAFETY SWITCH ROCKER SHAFT	1
PT10E2S#B160	PAN HEAD SCREW M6X12	4
PT10E2S#B161	LARGE WASHER M6	4
PT10E2S#B162	FRONT COVER	1
PT10E2S#B163	HANDLE	1
PT10E2S#B164	LOCK KNOB	1
PT10E2S#B169	LARGE WASHER M8	1
PT10E2S#B172	HEX SOCKET SCREW M8X16	2
PT10E2S#B377	NYLON WASHER	2

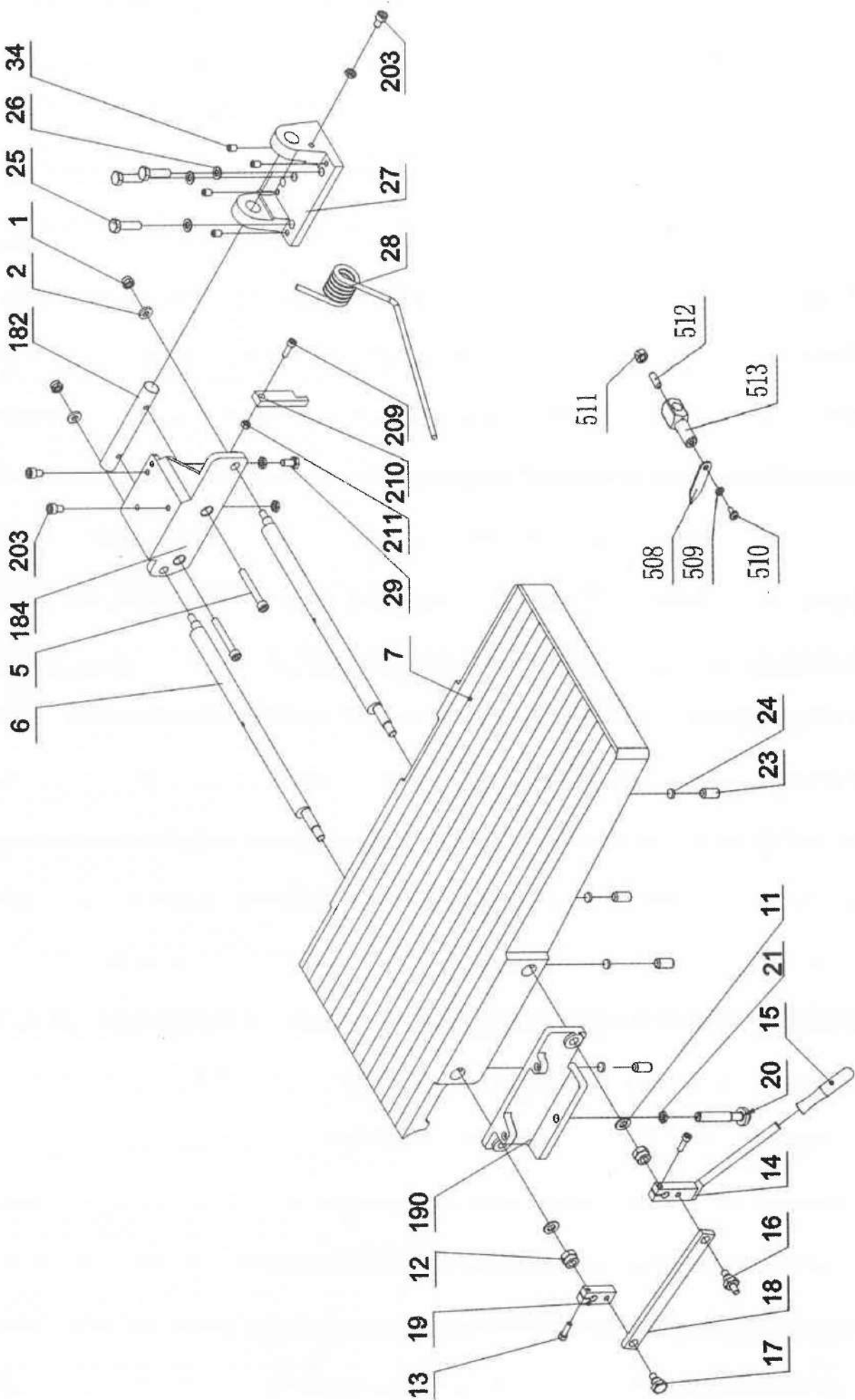
Drawing C:



Parts List C:

No.	Description	QTY.
PT10E2S#C013	LARGE WASHER	1
PT10E2S#C026	WASHER M8	3
PT10E2S#C131	CARRIAGE BOLT M12X65	1
PT10E2S#C132	TUBE	1
PT10E2S#C135	BEARING 6001-2Z	1
PT10E2S#C136	CHAIN TENSION WHEEL	1
PT10E2S#C137	LOCK NUT M12	1
PT10E2S#C138	PAN HEAD SCREW M4X30	2
PT10E2S#C139	LOCK NUT M6	2
PT10E2S#C140	WASHER M6	2
PT10E2S#C141	SAFETY SWITCH	1
PT10E2S#C142	SAFETY SWITCH BRACKET	1
PT10E2S#C143	HEX NUT M4	2
PT10E2S#C144	WASHER M6	6
PT10E2S#C145	HEX NUT M6	2
PT10E2S#C148	HEW SOCKET CAP SCREW M6X25	2
PT10E2S#C149	PAN HEAD SCREW M4X16	4
PT10E2S#C150	PLUG	1
PT10E2S#C151	SPECIAL BOLT	4
PT10E2S#C152	HEX THIN NUT M8	4
PT10E2S#C153	LOCK HANDEL FOR OUTFEED TABLE	1
PT10E2S#C154	RETAINING RING	4
PT10E2S#C155	SPRING	2
PT10E2S#C157	SWITCH	1
PT10E2S#C165	CABINET	1
PT10E2S#C166	LOCK HANDLE FOR INFEED TABLE	1
PT10E2S#C170	RETAINING RING	1

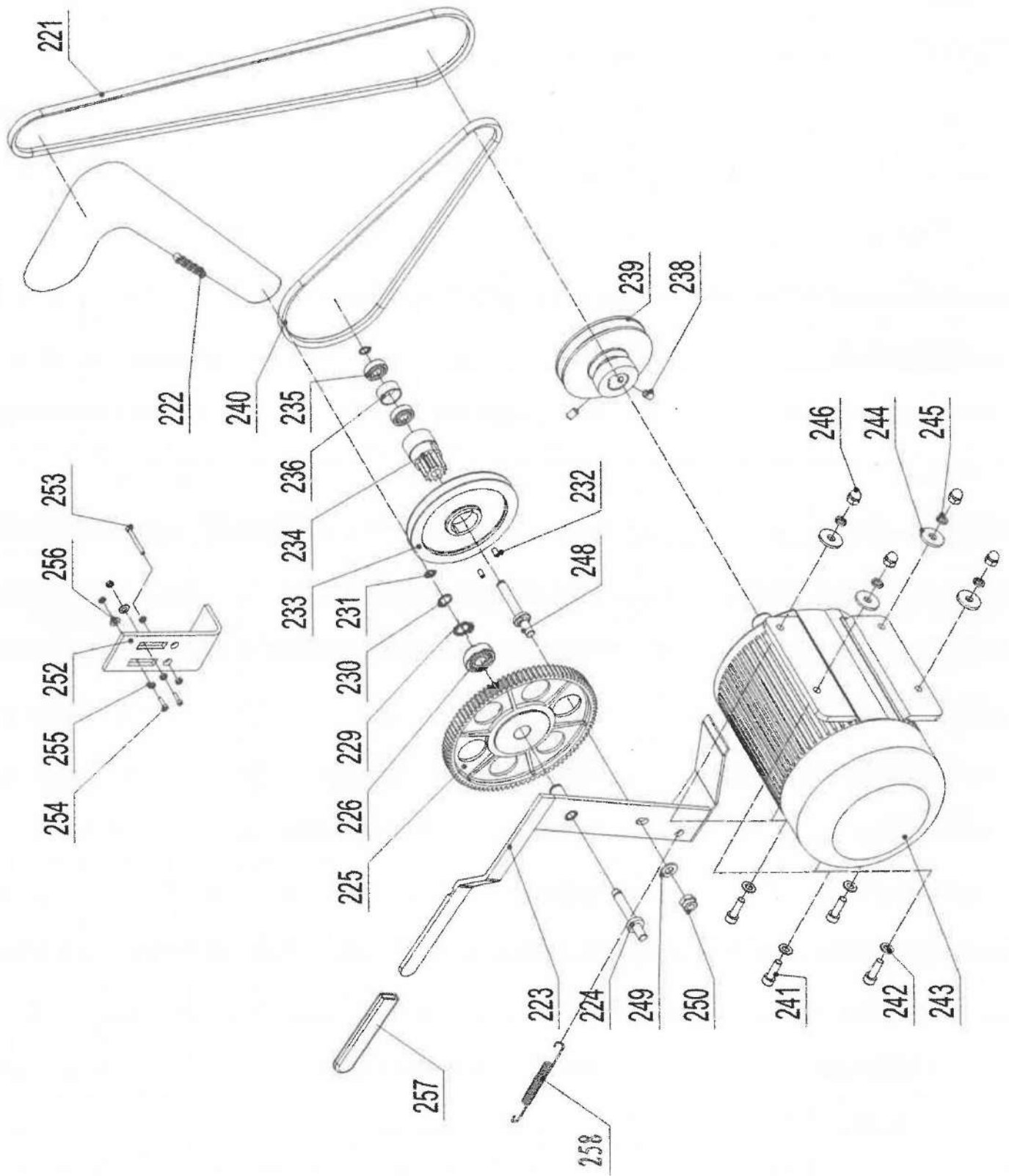
Drawing D:



Parts List D:

No.	Description	QTY.
PT10E2S#D001	LOCK NUT M8	2
PT10E2S#D002	THICK WASHER	2
PT10E2S#D005	HEX SOCKET CAP SCREW M8X60	2
PT10E2S#D006	ECCENTRIC SHAFT	2
PT10E2S#D007	INFEED TABLE	1
PT10E2S#D011	WASHER M12	2
PT10E2S#D012	HEX LOCK NUT M12	2
PT10E2S#D013	SOCKET CAP SCREW M6X20	2
PT10E2S#D014	ADJUSTING HANDLE	1
PT10E2S#D015	KNOB	1
PT10E2S#D016	BRACKET SCREW	1
PT10E2S#D017	BRACKET SCREW	1
PT10E2S#D018	ECCENTRIC SHAFT BRACKET	1
PT10E2S#D019	ECCENTRIC SHAFT CLAMP	1
PT10E2S#D020	TABLE LOCKING SHAFT	1
PT10E2S#D021	HEX THIN NUT M12	1
PT10E2S#D023	SOCKET SET SCREW M8X10	4
PT10E2S#D025	HEX BOLT M8X30	3
PT10E2S#D026	WASHER M8	3
PT10E2S#D027	TABLE SUPPORT	1
PT10E2S#D028	SPRING	1
PT10E2S#D029	SOCKET CAP SCREW M8X16	1
PT10E2S#D034	SOCKET SET SCREW M8X12	5
PT10E2S#D182	OUTFEED TABLE BRACKET SHAFT	1
PT10E2S#D184	INFEED TABLE BRACKET RIGHT	1
PT10E2S#D190	INFEED TABLE BRACKET LEFT	1
PT10E2S#D203	HEX SOCKET CAP SCREW M8X10	2
PT10E2S#D209	HEX SOCKET CAP SCREW M8X35	1
PT10E2S#D210	TABLE STOPPER	1
PT10E2S#D211	HEW THIN NUT M8	1
PT10E2S#D508	POINTER	1
PT10E2S#D509	SPRING WASHER	1
PT10E2S#D510	SCREW M4X8	1
PT10E2S#D511	HEX NUT M6	1
PT10E2S#D512	SET SCREW M6X16	1
PT10E2S#D513	SUPPORT POLE	1

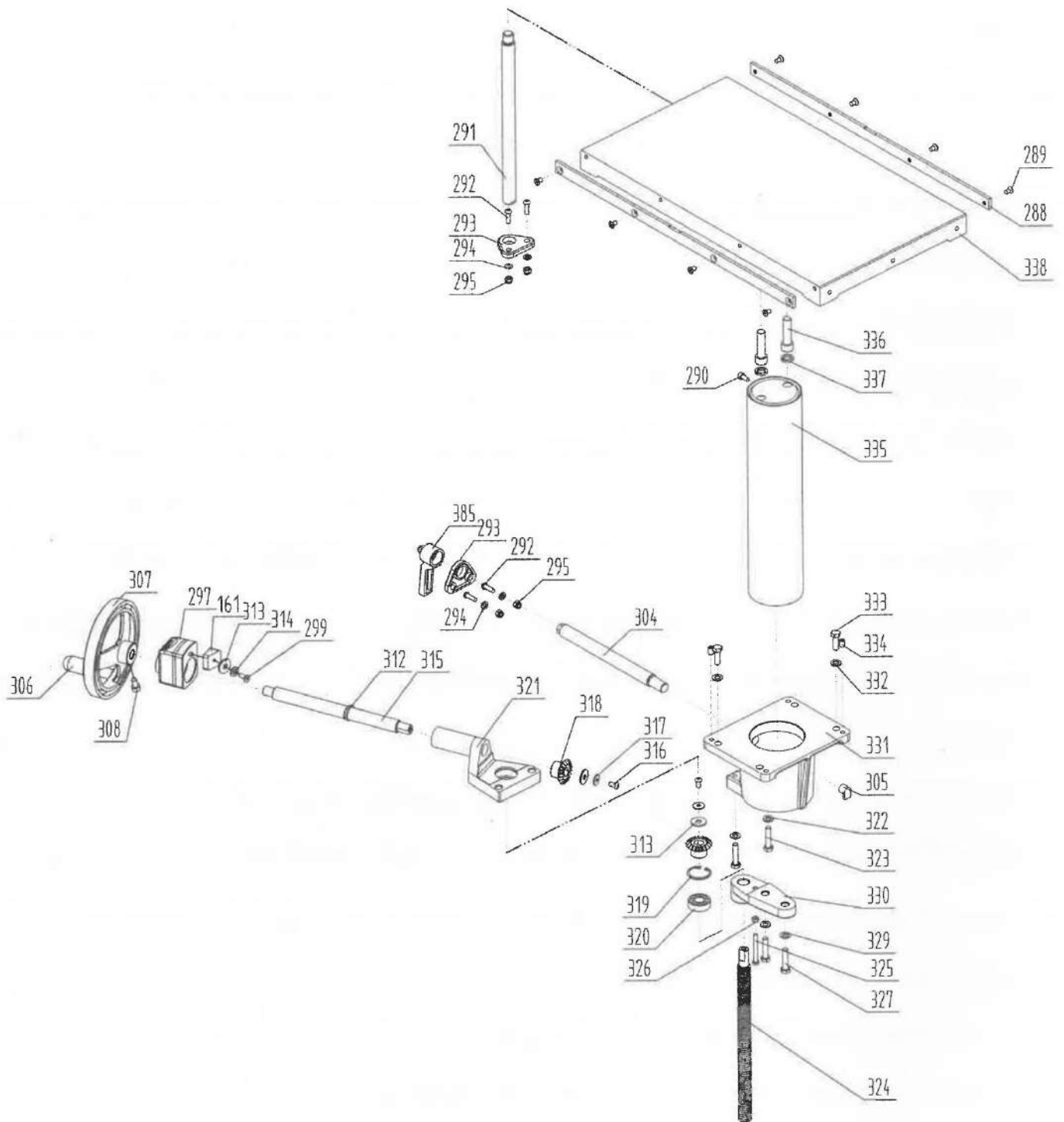
Drawing E:



Parts List E:

No.	Description	QTY.
PT10E2S#E221	V BELT FOR CUTTERBLOCK	1
PT10E2S#E222	DRIVE CHAIN	1
PT10E2S#E223	CAM WHEEL BRACKET	1
PT10E2S#E224	CAM WHEEL SHAFT	1
PT10E2S#E225	PLASTIC GEAR WHEEL ASSEMBLY	1
PT10E2S#E226	BEARING 61902	2
PT10E2S#E229	RETAINING RING M28	2
PT10E2S#E230	RETAINING RING M28	1
PT10E2S#E231	RETAINING RING M28	2
PT10E2S#E232	HEX SOCKET SET SCREW	2
PT10E2S#E233	V BELT PULLEY FOR FEED ROLLER	1
PT10E2S#E234	GEAR WHEEL	1
PT10E2S#E235	BEARING 61902	2
PT10E2S#E236	SPACER BEARING	1
PT10E2S#E238	HEX SOCKET SET SCREW	2
PT10E2S#E239	MOTOR PULLEY	1
PT10E2S#E240	V BELT FOR FEED ROLLER	1
PT10E2S#E241	HEX BOLT M8X25	4
PT10E2S#E243	MOTOR	1
PT10E2S#E244	LARGE WASHER M8	4
PT10E2S#E245	SPRING WASHER M8	4
PT10E2S#E246	CAP HEX NUT M8	4
PT10E2S#E248	SHAFT	1
PT10E2S#E249	WASHER M10	1
PT10E2S#E250	HEX LOCK NUT M10	1
PT10E2S#E252	PLATE	1
PT10E2S#E253	HEX BOLT M6X60	1
PT10E2S#E254	SOCKET CAP SCREW M6X20	2
PT10E2S#E255	HEX NUT M6	6
PT10E2S#E257	RUBBER HANDLE	1
PT10E2S#E258	TENSION SPRING	1

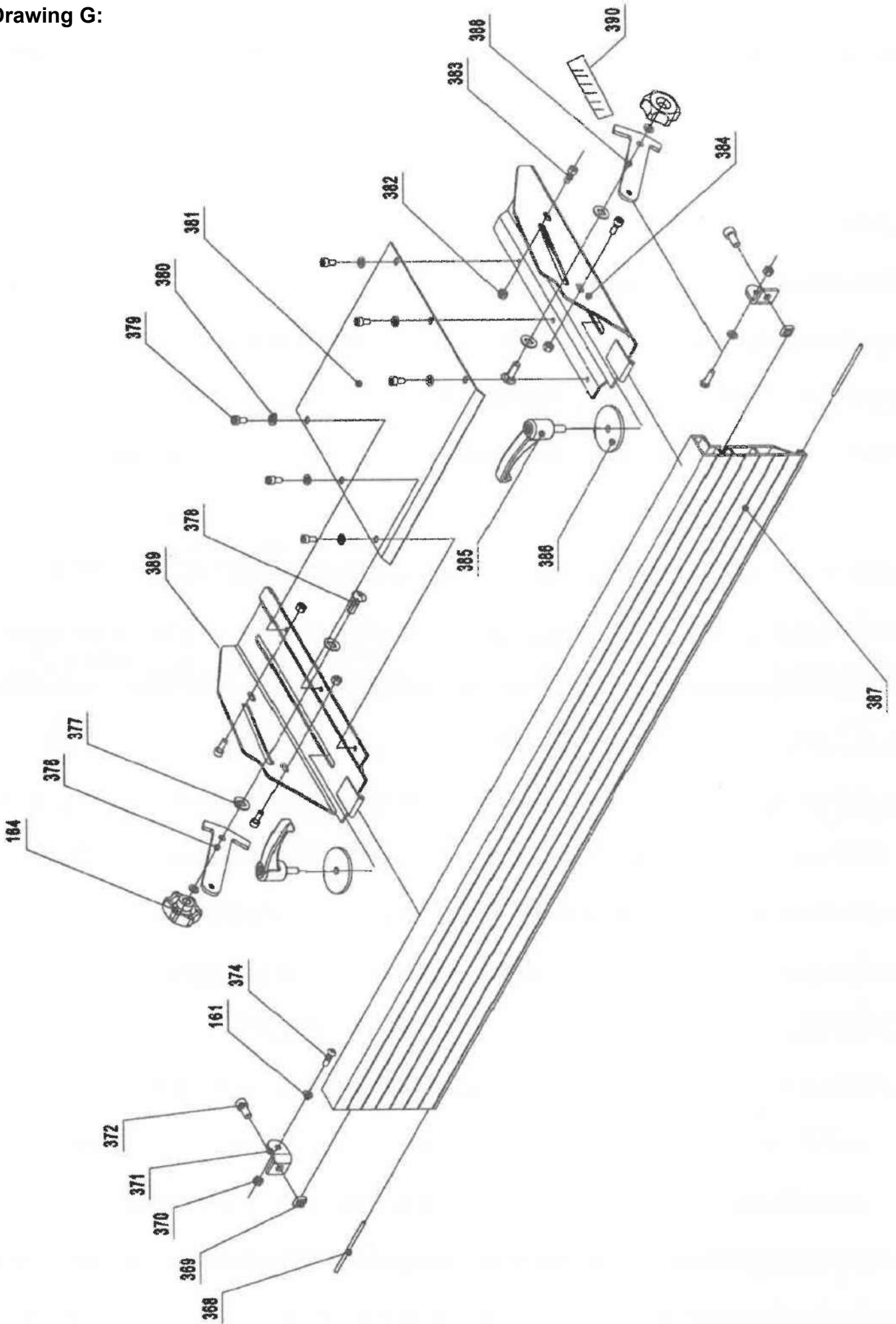
Drawing F:



Parts List F:

No.	Description	QTY.
PT10E2S#F161	INDICATOR SEAT	1
PT10E2S#F288	LONG BAR	2
PT10E2S#F289	SCREW M6X10	8
PT10E2S#F290	HEX SOCKET SET SCREW M6X12	1
PT10E2S#F291	THICKNESS TABLE GUIDE BAR	1
PT10E2S#F292	HEX SOCKET CAP SCREW M6X20	4
PT10E2S#F293	GUIDE BAR BRACKET	2
PT10E2S#F294	WASHER M6	4
PT10E2S#F295	HEX LOCK NUT M6	4
PT10E2S#F297	POSITON INDICATOR	1
PT10E2S#F299	SCREW M6X16	1
PT10E2S#F304	LOCKING BAR	1
PT10E2S#F305	LOCKING SHOE	1
PT10E2S#F307	CRANK HANDWHEEL	1
PT10E2S#F308	HEX SOCKET CAP SCREW N8X16	1
PT10E2S#F312	RETAINING RING	1
PT10E2S#F313	LARGE WASHER M8	2
PT10E2S#F314	WASHER M8	2
PT10E2S#F315	CRANK BAR	1
PT10E2S#F316	PAN HEAD SCREW M6X12	2
PT10E2S#F317	LARGE WASHER M6	2
PT10E2S#F318	BEVEL GEAR	2
PT10E2S#F319	RETAINING RING	2
PT10E2S#F320	BEARING 6202-2Z	2
PT10E2S#F321	BEVEL GEAR BRACKET	1
PT10E2S#F322	WASHER M8	2
PT10E2S#F323	HEX BOLT M8X35	2
PT10E2S#F324	THREAD ROD	1
PT10E2S#F325	HEX BOLT M6X50	1
PT10E2S#F326	HEX NUT M6	1
PT10E2S#F327	HEX BOLT M8X35	2
PT10E2S#F329	WASHER M8	2
PT10E2S#F330	THREAD ROD BRACKET	1
PT10E2S#F331	COLUMN SUPPORT	1
PT10E2S#F332	WASHER M8	4
PT10E2S#F333	HEX BOLT M8X25	4
PT10E2S#F334	HEX SOCKET SET SCREW M8X12	4
PT10E2S#F335	COLUMN	1
PT10E2S#F336	HEX SOCKET SET SCREW M12X45	2
PT10E2S#F337	SPRING WASHER M12	2
PT10E2S#F338	THICKNESS TABLE GUIDE BAR	1
PT10E2S#F385	LOCK HANDLE	1

Drawing G:



Parts List G:

No.	Description	QTY.
PT10E2S#G161	LAGRE WASHER M6	2
PT10E2S#G164	LOCK KNOB	2
PT10E2S#G368	PIN FOR HINGE	2
PT10E2S#G369	SQUARE NUT M8	2
PT10E2S#G370	NUT M6	2
PT10E2S#G371	FENCE MOUNTING BRACKET	2
PT10E2S#G372	HEX SOCKET SCREW M8X16	2
PT10E2S#G374	HEX SOCKET CAP SCREW M6X16	2
PT10E2S#G376	FENCE SUPPORT RIGHT	1
PT10E2S#G377	NYLON WASHER	4
PT10E2S#G378	CARRIAGE BOLT M8X25	2
PT10E2S#G379	PAN HEAD SCREW M6X12	6
PT10E2S#G380	WASHER M6	6
PT10E2S#G381	CUTTERBLOCK COVER	1
PT10E2S#G382	HEX NUT M6	4
PT10E2S#G383	HEX SOCKET CAP SCREW M6X10	4
PT10E2S#G384	FENCE BRACKET LEFT	1
PT10E2S#G385	LOCK HANDLE	2
PT10E2S#G386	SPECIAL WASHER	2
PT10E2S#G387	FENCE	1
PT10E2S#G388	FENCE SUPPORT LEFT	1
PT10E2S#G389	FENCE BRACKET RIGHT	1
PT10E2S#G390	FENCE SCALE	1



Woodworking machinery at its best!

Last Updated March 2026

**Charnwood, Cedar Court, Walker Road, Hilltop Industrial Estate, Bardon,
Leicestershire, LE67 1TU**

Tel. 01530 516 926

email: sales@charnwood.net website: www.charnwood.net