



Woodworking machinery at its best!



**14" BANDSAW
OWNERS MANUAL**

MODEL: C14BX



**Charnwood, Cedar Court, Walker Road,
Hilltop Industrial Estate, Bardon Hill, Leicestershire, LE67 1TU**

**Tel. 01530 516 926
email: sales@charnwood.net website: www.charnwood.net**

GENERAL SAFETY RULES



WARNING: Do not attempt to operate the machine until you have thoroughly read and completely understood all instructions, rules, etc. contained in this manual. Failure to comply may result in accidents involving fire, electric shock, or serious personal injury. Keep this owner's manual and review frequently for continuous safe operation.

1. Know your machine. For your own safety, read the owner's manual carefully. Learn its application and limitations, as well as specific potential hazards pertinent to this machine.
2. Make sure all tools are properly earthed.
3. Keep guards in place and in working order. If a guard must be removed for maintenance or cleaning, make sure it is properly replaced before using the machine again.
4. Remove adjusting keys and spanners. Form a habit of checking to see that the keys and adjusting spanners are removed from the machine before switching it on.
5. Keep your work area clean. Cluttered areas and workbenches increase the chance of an accident.
6. Do not use in dangerous environments. Do not use power tools in damp or wet locations, or expose them to rain. Keep work areas well illuminated.
7. Keep children away. All visitors should be kept a safe distance from the work area.
8. Make workshop childproof. Use padlocks, master switches and remove starter keys.
9. Do not force the machine. It will do the job better and be safer at the rate for which it is designed.
10. Use the right tools. Do not force the machine or attachments to do a job for which they are not designed. Contact the manufacturer or distributor if there is any question about the machine's suitability for a particular task.
11. Wear proper apparel. Avoid loose clothing, gloves, ties, rings, bracelets, and jewellery which could get caught in moving parts. Non-slip footwear is recommended. Wear protective hair covering to contain long hair.
12. Always use safety glasses. Normal spectacles only have impact resistant lenses. They are not safety glasses.
13. Do not over-reach. Keep proper footing and balance at all times.
14. Maintain the machine in good condition. Keep the machine clean for best and safest performance. Follow instructions for lubrication and changing accessories.
15. Disconnect the machine from its power source before servicing and when changing the blade.
16. Never leave the machine running unattended. Turn the power off. Do not leave the machine until it comes to a complete stop.
17. Do not use any power tools while under the effects of drugs, alcohol or medication.
18. Always wear a face or dust mask if operation creates a lot of dust and/or chips. Always operate the tool in a well ventilated area and provide for proper dust removal. Use a suitable dust extractor.

ADDITIONAL RULES FOR BAND SAWS

1. Ensure that the saw table is clear of off-cuts, tools or anything else that might foul the work-piece.
2. When cutting long boards use one or more roller stand(s) to support the work or have a competent helper to support it as it feeds off the rear of the table.
3. Always make sure that the blade is tracked and tensioned correctly before starting to use the saw.
4. Always use a brush to clear the table of dust or debris. **NEVER** use your hands, especially when the machine is running.
5. Always ensure that the thrust bearings and/or guide blocks are correctly adjusted before using the saw.
6. ALWAYS USE A PUSH STICK WHEN IT IS NECESSARY TO PUSH ANY PIECE OF MATERIAL OF SUCH SIZE THAT IT WOULD BRING YOUR HANDS WITHIN 30 CM OF THE BLADE.
7. Do not cut material that is badly warped or which has screws or nails in it.
8. Be extra vigilant when cutting stock which has loose knots in it as these may fly out of the saw.
9. NEVER tilt the table when the saw is running.
10. To avoid exposure to hazardous dust, do not use this saw without connecting it to a suitable dust extractor.
11. Always work with a sharp saw blade and feed the work at a rate suited to the thickness and hardness of the material.
12. Do not try to operate the saw with the doors open. There are safety interlocks to prevent this. Do NOT try to override them.

Note: This band saw has been designed and built solely as a woodworking machine. Do not modify it in any way or use it for anything other than its designated purpose. Neither the manufacturer nor the supplier are liable for any damage or injury caused by incorrect assembly, operation or electrical connection of this machine.

Important:



Risk of Injury!
Never reach into
the running saw blade.



Wear Eye
Protection



Wear Ear
Protection

C14BX Specification

Table size	400 x 546 mm (16" X 21.5")
Table height	965 mm (38")
Motor (240v Induction)	1800W (2.4hp)
Blade length	2921 mm (115")
Blade widths	3 - 20 mm (1/8" – 3/4")
Blade speeds (no load)	865 m/min
Maximum depth of cut at 90	330 mm (13")
Throat capacity	340 mm (13.6")
Table Tilt	-7 degrees to +45 degrees
Mitre Guide T-Slot	19mm to 25mm (3/4" to 1")
Fence Height (Hi / Lo)	155mm / 12mm (6" / 0.5")
Dust extractor hose connection	2 x 100 mm
Recommended Breaker Size	16 Amp
Min Extraction Airflow Required	850 m3/hour
Weight	122kg
Assembled Dimensions (W x D x H)	820 x 670 x 1850 mm
Assembly Time Required	30 Minutes (Needs 2 people)
Rating	Trade *

*Rating Description

Trade: Suitable for daily use by professional woodworkers.

Continuously rated, high power, and heavy-duty construction. Typically used by several different operators in a small or medium-sized business. Will be used up to the machines maximum limit with some long work periods. Expected maximum use of 1000 hours annually.

Unpacking



Please Note: Do not dispose of any packaging until the machine has been fully assembled and tested. In the unlikely event of a problem which requires the product to be returned, the packaging will need to be re-used.

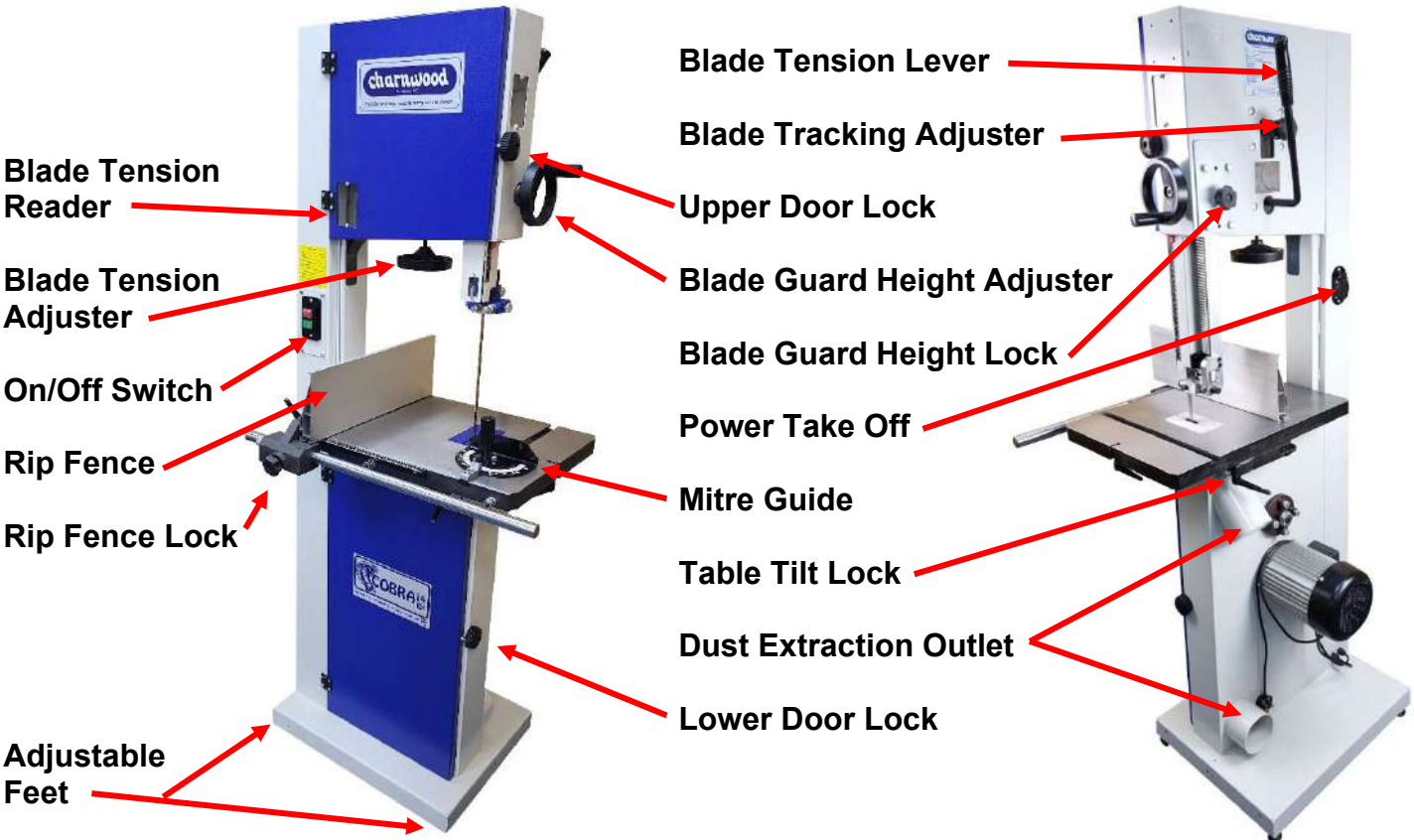
Cut the strapping, open the carton and remove all loose parts from the packaging.



Familiarise yourself with the components and read this manual.

Clean the grease off the table and all other components.

Charnwood C14BX Bandsaw



Assembly



Fit the Feet

Cut the end of the box away and remove the end foam packing piece.

(This can be used as a kneeling pad when fitting the table)

Screw the 4 feet into the base.



Stand The Bandsaw upright

Cut the rest of the box away and lift the bandsaw from the top edge to stand it upright.

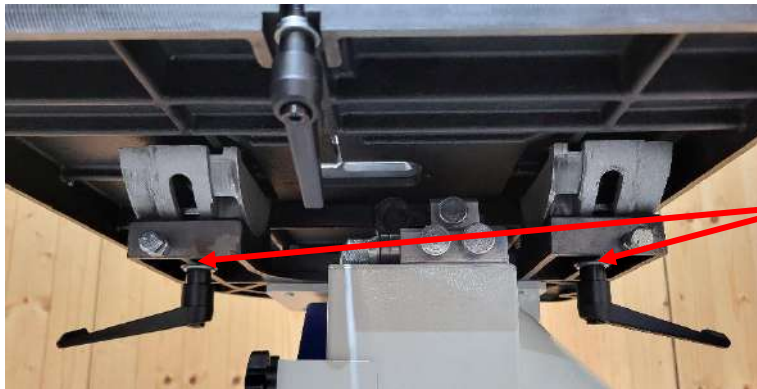
Tip: If the box is still on the pallet: Slide the machine forward from the carton by about 250mm before lifting.



Prepare The Table

Remove the Table and lay it down flat

Remove the 2 locking levers and washers



Mount The Table

Lift the Table up and onto the Table Trunnions

Ensure that the two fixing bolts are protruding down through the bottom of the Trunnions.

Replace the 2 locking levers and washers.



Prepare the Fence Rail

Remove 3 x M8 nut and washer from the Fence Rail Studs.



Mount The Fence Rail

Feed the 3 studs through the front face of the Table.

Refit 3 x M8 Nut and washer.

Leave finger tight for now.

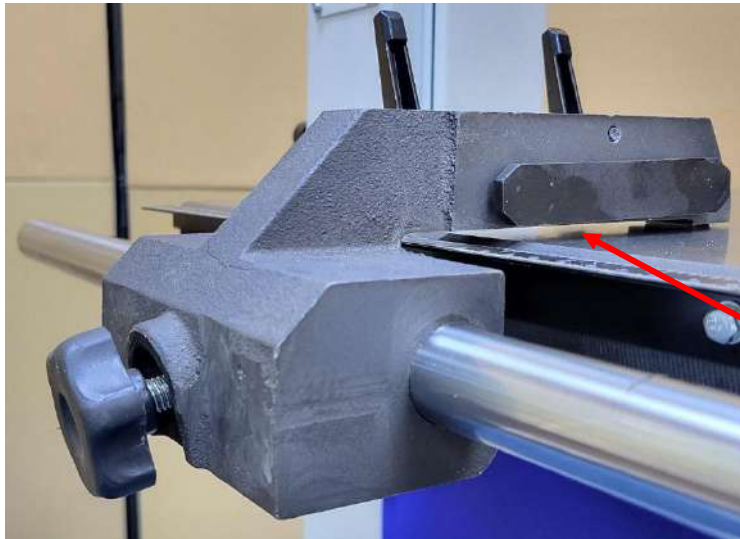
Once the fence has been installed, if it does not sit at 90 degrees to the table, lift one end of the Fence Rail to correct it before tightening.



Prepare The Fence Carrier

Use a screwdriver to adjust the nylon screw on the underside of the Fence Carrier.
It should protrude a few mm beyond the bottom of the block.

It will help the fence assembly glide along the table.



Fit the Fence Bracket

Slide the Fence Carrier onto the Fence Rail.

Set the Fence Rail so the Fence Carrier Sits level on the Table.

There should be a small gap underneath the flat base.

Tighten the 3 x M8 nuts to secure the Fence Rail to the Table.



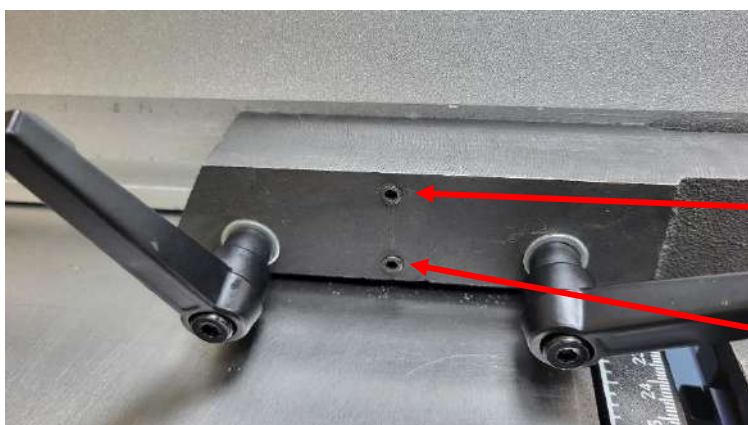
Fit the Fence

Slide the Fence onto the Fence Carrier so that the lock bar is engaged into a slot in the aluminium Fence.

Lock in place using the 2 locking levers.

Note: The Aluminium Fence should be slightly raised so that it does not contact with the table.

The fence assembly should now run smoothly along the rail.



90 Degree Adjustment

If it is ever necessary to adjust the fence so that it is 90 degrees to the table:

Adjust the top grub screw to push the top of the fence out.

Adjust the bottom grub screw to push the bottom of the fence out.



Fit The Handwheel

Fit the rise and fall handwheel onto the shaft.

Lock it in place by using a 3mm hex key to tighten the grub screw.

Make sure the handwheel is aligned so that the grub screw is lined up with the flat part of the shaft before tightening.



Fit The Mitre Guide

Fit the Mitre Guide into the T-slot in the table.

Note: The fit of the mitre guide in the T-slot can be adjusted using three spring loaded bearings.

Use a 3mm Hex key to adjust the springs so that the guide slides without any sideways play.



Onboard Storage

When not in use, the mitre guide can be stored in the brackets provided on the side frame of the bandsaw.



Fit The Sawblade

Rotate the lock and open the top door.



Rotate the lock and open the bottom door.

Note: To prevent accidental starting the doors are fitted with micro switches which cuts power to the motor when a door is open.



Loosen and slide out the table slot bolt.



Remove the table insert by undoing the single screw.



Remove the dust deflector block from inside the lower cabinet.



Lower the blade tension release lever.



Open the blade guard cover

Unpack The Blade

Caution: If you are unfamiliar with unpacking a bandsaw blade, wear gloves and be aware they can spring open as they uncoil.

Slide the blade through the slot in the table and around the left hand side of the fence rail.

Ensure the teeth are facing towards the front with the tips on the right hand side facing downwards.

Feed the blade onto the top and bottom wheels then raise the blade tension lever.

The blade can sit in the centre of the rubber tyre or with the tips of the teeth projecting over the front end.

Refit the table insert, dust deflector block and table slot bolt.

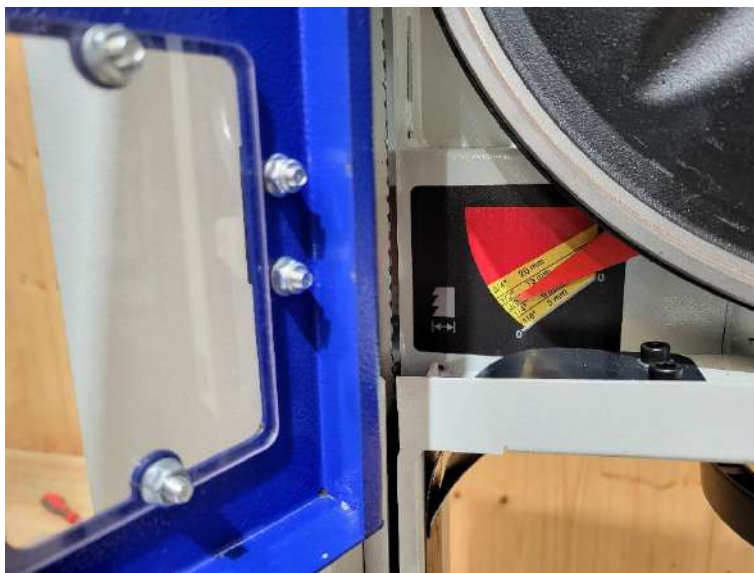


Set The Blade Tension

The tension lever is a quick action blade tension control.

To set the blade tension for the first time, move the lever upright to the tensioned position.

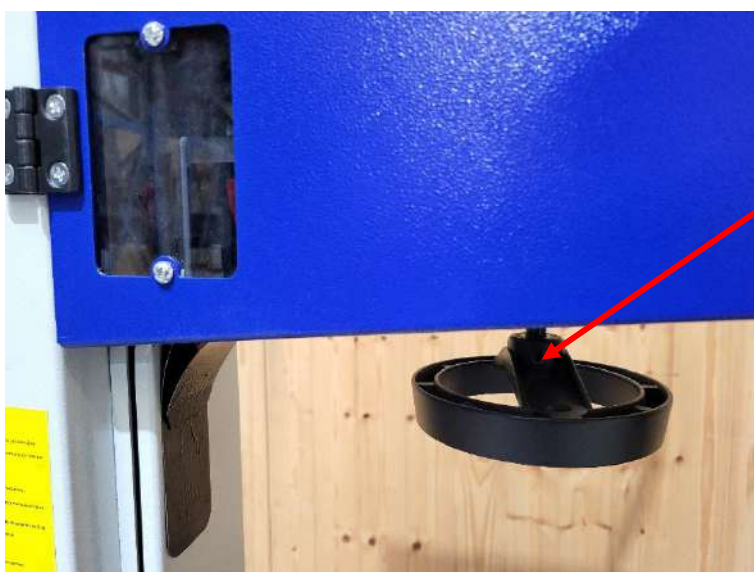
Note: It is recommended that you move the quick release lever to the slack position when the saw will not be used for a long period of time.



As a guide for setting the correct amount of blade tension there is an indicator provided.

Blade tension varies with the width of the blade. Use more tension for wider blades.

(Alternately raise the blade guard to its highest position and increase the tension until it is only possible to deflect the blade sideways by 2 to 3 mm at its midpoint between the table and the guard).



If the tension indicator is not in the correct place for the width of blade you are using, it can be adjusted.

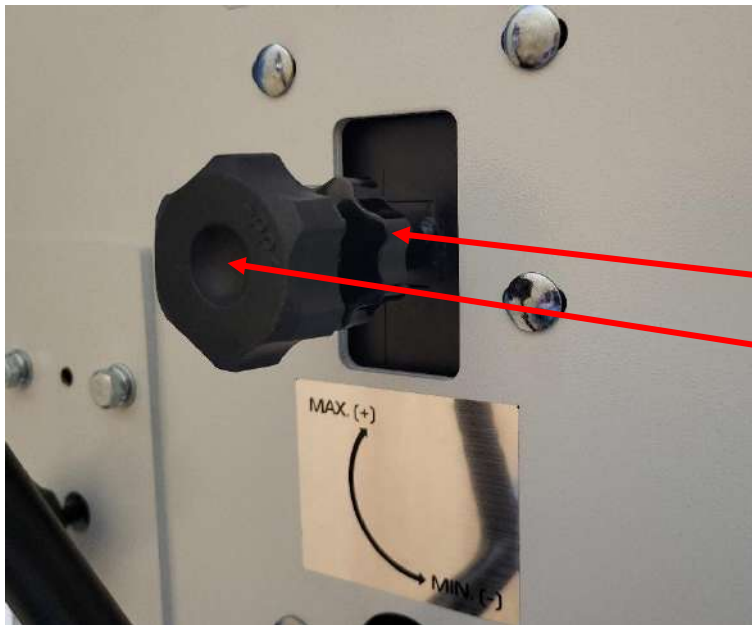
Rotate the tension tuning knob clockwise to increase the tension, anticlockwise to lower the tension.

To check if the blade is now seated correctly:

Rotate the top wheel by hand.

Rotate the wheel 3 or 4 times and check the blade does not move forwards or backwards on the wheel.

If the blade sits in place, you are ready to start cutting.



Blade Tracking

If the blade starts to move forwards or backwards on the top wheel adjust the tracking control, located at the rear of the machine, until it is balanced.

Lock

Tracking Adjuster

If the blade starts to move towards the front edge of the wheel, loosen the lock and turn the adjusting knob clockwise.

If the blade moves backwards, turn anticlockwise.

It is often necessary to make a small adjustment when fitting a new blade.

Setting Up The Bandsaw

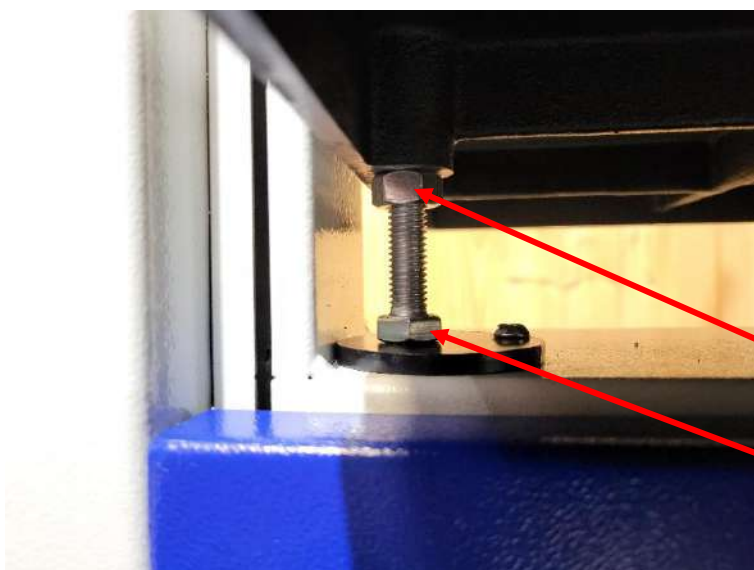


Set The Table Angle

The table angle can be changed by loosening the 2 locking levers.

Tilt the table to the required angle using the scale on the trunnion.

Once the angle has been set, tighten the 2 locking levers.



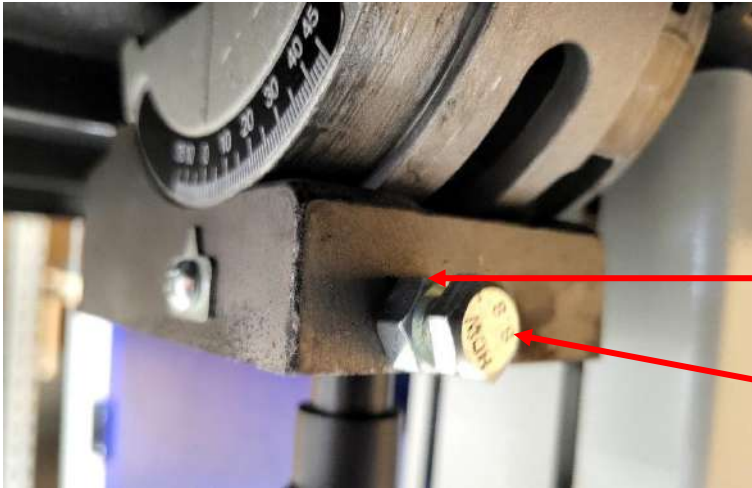
Set the table to zero degrees on the scale.

Use a square to check if the table sits at 90 degrees to the blade.

If an adjustment needs to be made, there is a stop bolt underneath the table.

Use a 16mm spanner to loosen the locking nut

Adjust the bolt until the table sits at 90 degrees to the blade.



Next set the table at 45 degrees on the scale.

If an adjustment needs to be made, there is a stop bolt on the side of each trunnion bracket.

Use a 13mm spanner to loosen the locking nut

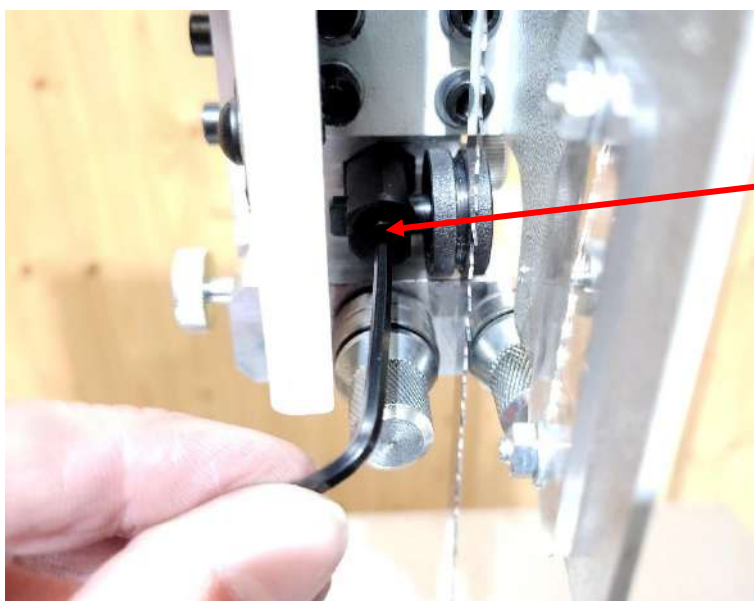
Adjust the bolt until the table sits at 45 degrees to the blade.



The table can also be tilted to -7 degrees

To adjust the table passed the zero degrees position, rotate the round disc, so that the stop bolt can move through the slot below.

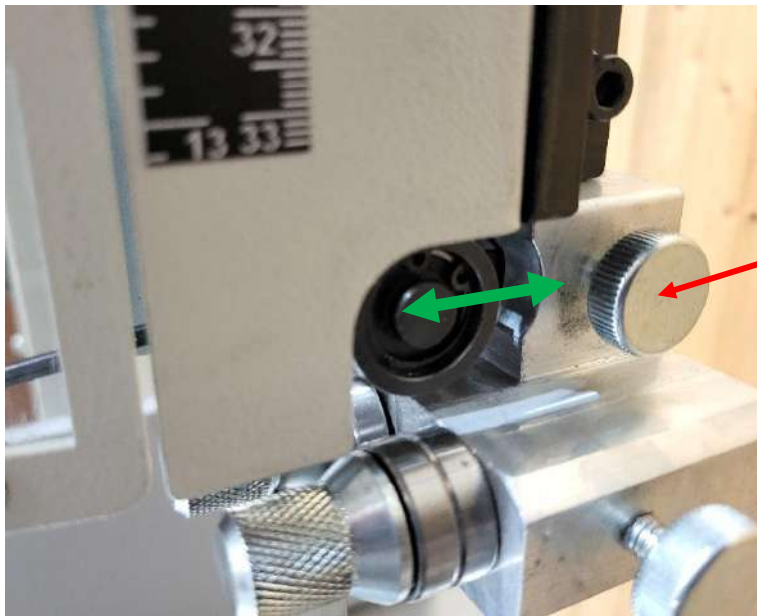
Set The Upper Blade Guides



Centralise The Rear Bearing

Use a 3mm Hex key to undo the grub screw

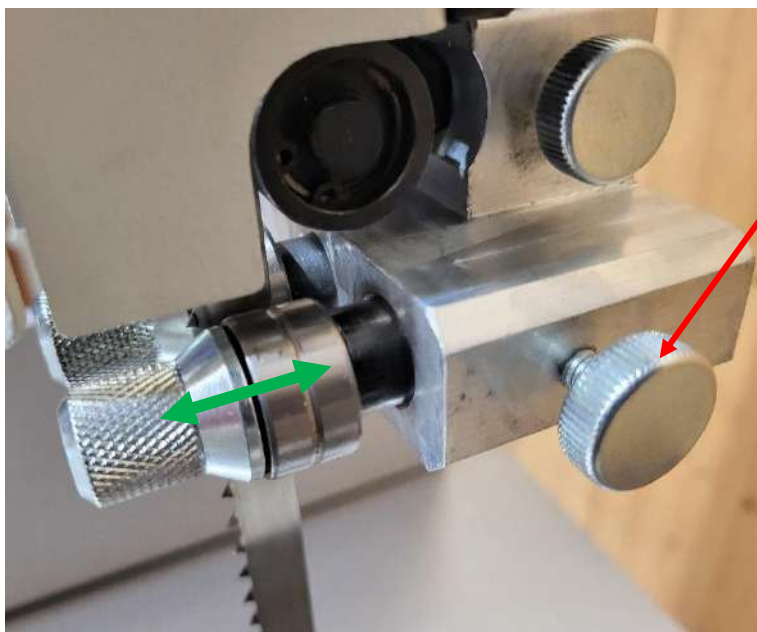
Slide the guide block left or right until the blade runs in the centre of the guide bearing groove.



Set The Rear bearing Depth

Rear Bearing Locking Screw

Loosen the lock, slide the bearing so that it sits 0.5mm from the back edge of the blade.

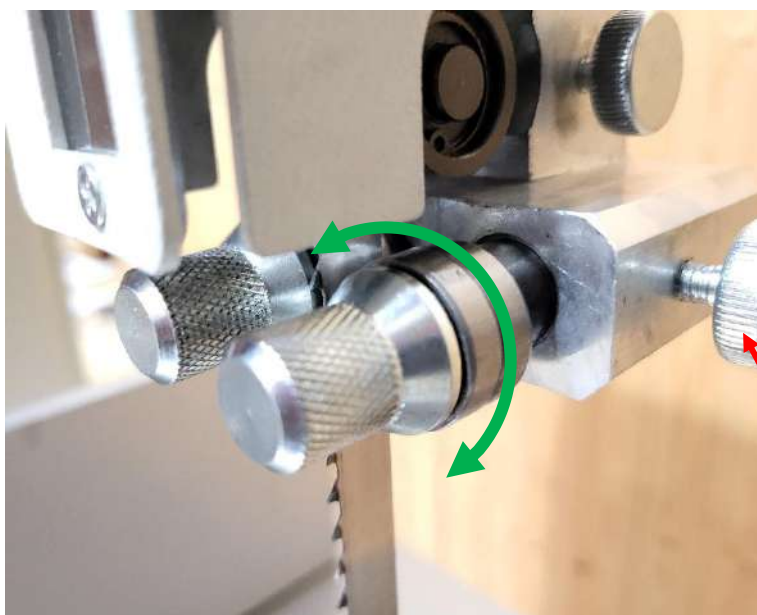


Adjust The Side Bearings

Loosen the right hand locking screw

Slide the guide assembly forwards or backwards

The front of the bearing should be 2mm back from the gullet of the blade teeth.



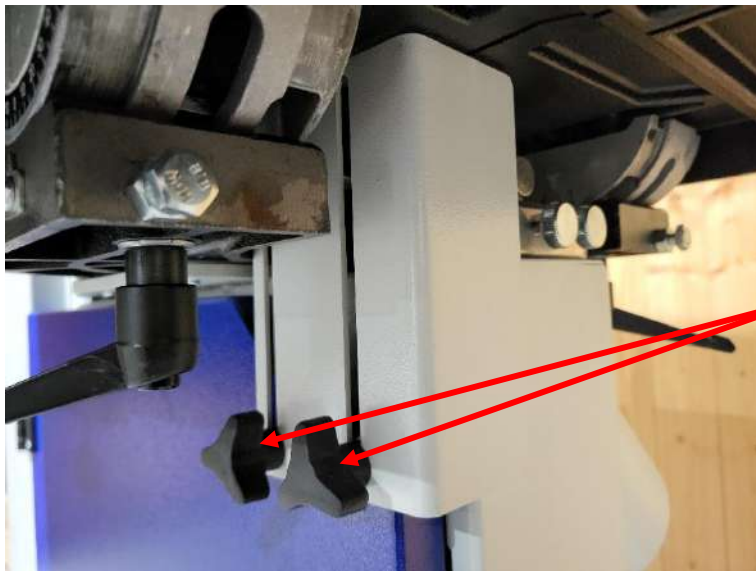
Next adjust the gap between the blade and the bearing.

The side bearings are mounted on a cam shaft. Rotating the knurled screw moves the bearing towards or away from the blade.

Set the bearing so it sits 0.5mm from the blade.

Tighten the locking screw

Repeat for the left hand bearing.



Set The Lower Blade Guides

Loosen the 2 locking knobs and lower the blade guard.

Locking Knob



Set The Rear Thrust Bearing

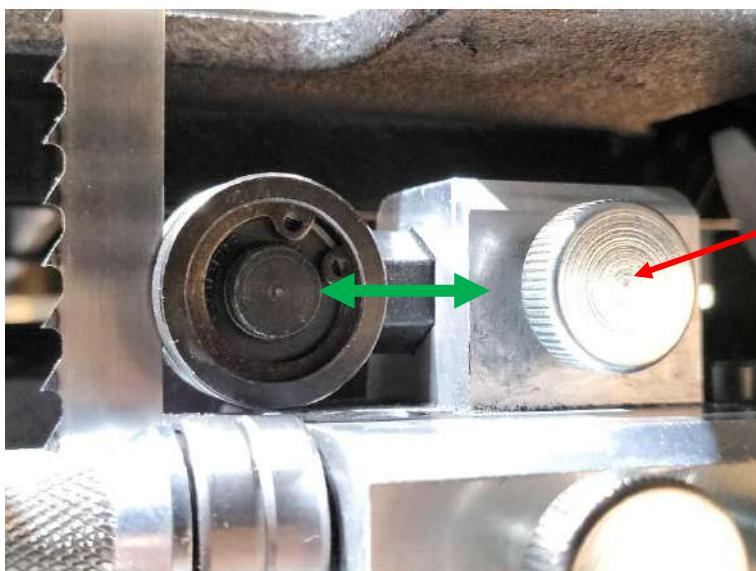
Remove the table insert

Tilt the table to 45 degrees

Centralise The Rear Bearing

Use a 3mm Hex key to undo the grub screw

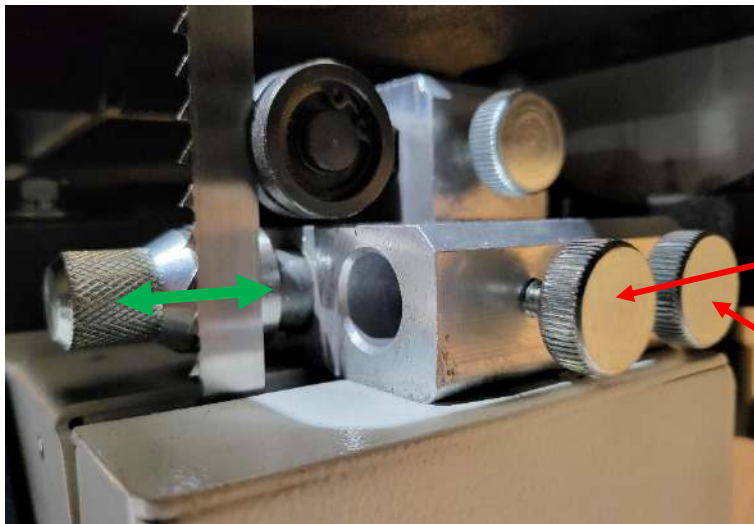
Slide the guide block left or right until the blade runs in the centre of the guide bearing groove.



Set The Rear Bearing Depth

Rear Bearing Locking Screw

Loosen the lock, slide the bearing so that it sits 0.5mm from the back edge of the blade.



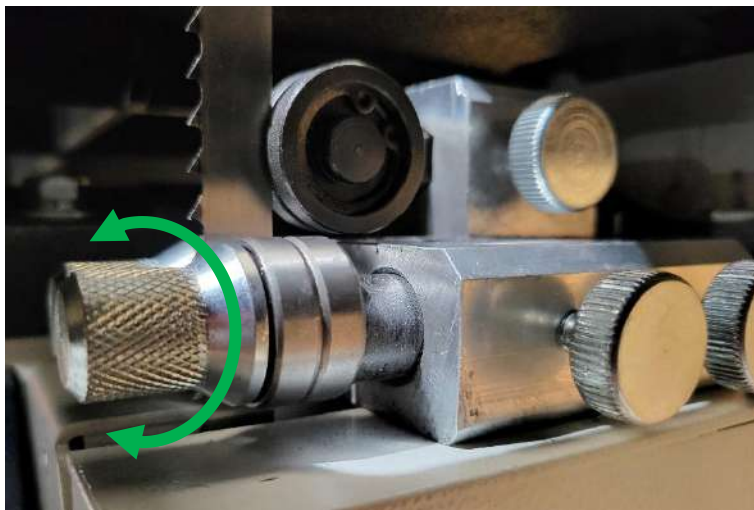
Adjust The Side Bearings

To improve visual access to the left hand bearing, completely remove the right hand bearing.

Loosen right bearing locking screw. Pull the bearing assembly forward to remove.

Loosen left bearing locking screw

Slide the guide assembly forwards or backwards. The front of the bearing should be 2mm back from the gullet of the blade teeth.

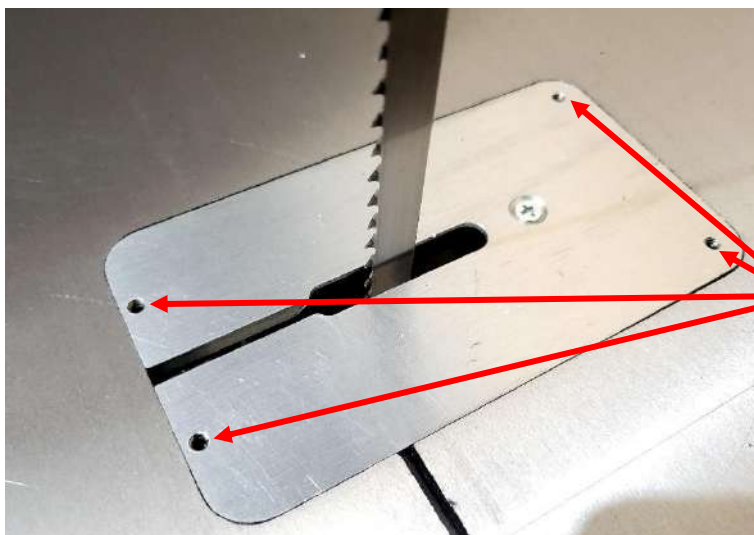


Next adjust the gap between the blade and the bearing.

The side bearings are mounted on a cam shaft. Rotating the knurled screw moves the bearing towards or away from the blade.

Set the bearing so it sits 0.5mm from the blade.

Refit the right hand bearing and repeat the steps to set the bearing relative to the blade.



Level The Table Insert

Loosen the centre screw.

Place a straight edge across the table

Use a 2mm Hex key to adjust the 4 grub screws in the corners of the table insert until it is level.

Tighten the centre screw



Set The Rip Fence Scale

Slide the rip fence until it reads 10cm and lock in place. Double check the measurement with a ruler. If the scale needs adjusting:

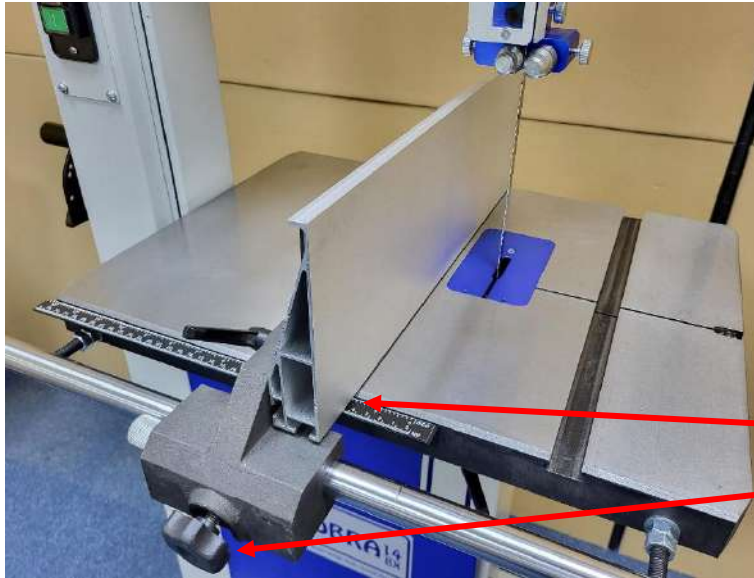
Loosen 2 bolts and slide the scale left or right until the scale matches the reading taken.

Once adjusted tighten the 2 bolts.

Making A Cut

For every type of cut, the blade guard should be lowered so that the bottom edge of the guide is just above the work piece. This is for safety and to better control the blade during the cut.

Always use a push stick so that you keep your fingers at least 30cm from the blade.



Straight Rip Cuts

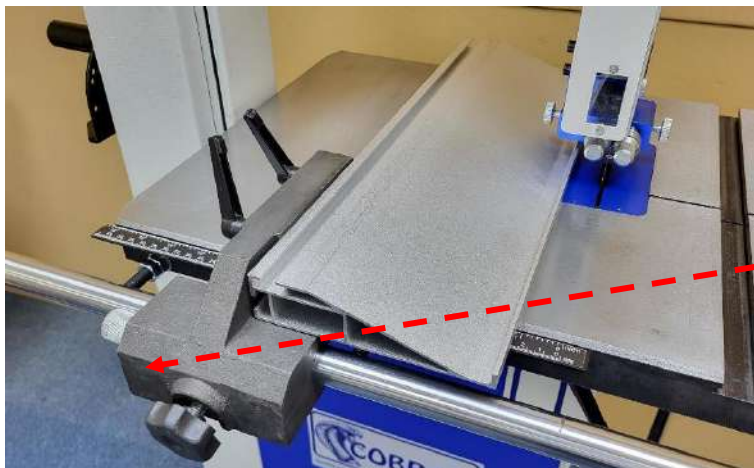
Ripping cuts are generally made using the guide fence and run along the grain of the timber.

The rip fence can be used in the vertical position for large timber.

Read the scale here

Rip Fence Lock

The fence can also be positioned in the low mode for cutting thin strips in narrow material.



Micro Adjustment

Minor incremental adjustments can be made to the fence position.

Loosen the Rip Fence Lock

Tighten the micro Lock (underneath the Fence Bracket)

Rotate the micro Adjuster to slide the fence along.

Once the position has been set, tighten the Fence Lock.



Crosscutting

Cutting across the grain is generally done using the mitre fence.

To adjust the angle of the fence:

Undo the fence lock

Pull up the release pin

Rotate the fence until it clicks into one of the preset stops. Tighten the lock.

Preset stops at: 0, 22.5, 30, 45, 60, 67.5 & 90 degrees each way. Other angles can be set using the scale.



Light Socket

On the rear frame of the bandsaw there is a power take off socket, suitable for powering a work light.

Blade width	Minimum Circle Diameter
3mm (1/8")	10mm (3/8")
6mm (1/4")	60mm (2.1/2")
10mm (3/8")	100mm (4")
13mm (1/2")	130mm (5.1/4")
16mm (5/8")	160mm (6.1/4")
20mm (3/4")	200mm (8")
25mm (1")	250mm (10")

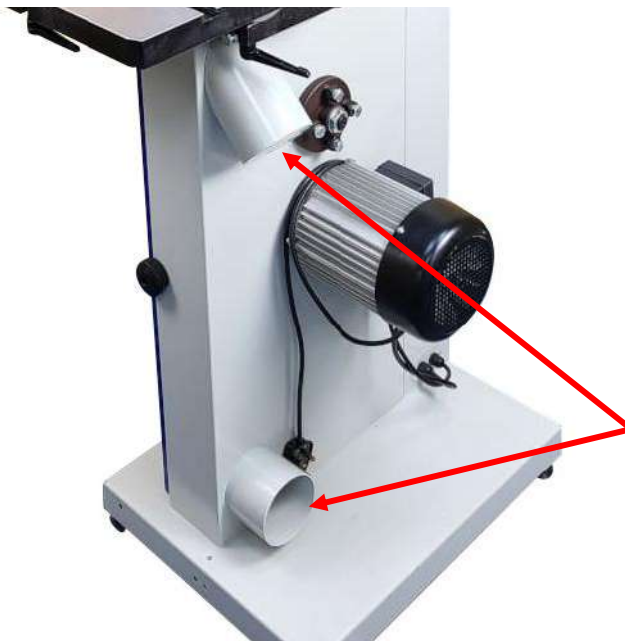
Cutting Curves

The bandsaw can be used to cut curves freehand. The diameter of the curve you can cut depends on the width of the blade. A narrower blade can cut tighter curves than a wide blade. The table on the left gives a guide.

Note: Once you have cut curves with a blade, the set of the teeth will have changed. After having cut curves with a blade it will not cut so accurately in a straight line. Ideally you should keep one blade for straight cuts and one blade for curved cuts.

It is strongly recommended that this saw is connected to a dust extractor.

There are two 100mm diameter outlets provided for dust collection. Connect both of them to achieve the most efficient extraction.



Connect 100mm Hose

Maintenance

Clean the interior of the machine on a regular basis, especially if you use it without a dust extractor.

Dust may collect in both the upper and lower housings. This must be removed with a vacuum cleaner as an accumulation will reduce the efficiency of the saw and in an extreme case will pose a fire risk.

Troubleshooting

Problem	Cause	Remedy
Machine does not start	Blown Fuse	Replace Fuse
	Loose switch terminal	Inspect back of switch
	Faulty switch	Replace switch
	Doors not closed	(The machine is fitted with a safety interlock switch, it will not run if a door is open)
Only starts when Green button is held down	Faulty switch	Replace switch
Motor slows down during operation	Blade is blunt	Replace blade
	Feed Speed is Too high	Feed the Work slower, let the blade do the cutting
	Drive belt is slipping	Re-tension drive belt
	Attempting to take too deep a cut	It may exceed the capacity of the machine
Machine does not run but buzzing noise heard from motor	Failed capacitor	Replace the motor start capacitor.


Declaration of Conformity

Charnwood Machinery declare that Woodworking Band Saw, Model C14BX

Conforms with the following Directives: Machinery Directive 2006/42/EC

And further conforms to the machinery example for which the EC type examination Certificate No. M6A 099410 0005 has been issued by TUV SUD Product Service GmbH, Zertifizierstelle, Ridlerstrasse 65, 80339 Munchen, Germany.

I hereby declare that equipment named above has been tested and found to comply with the relevant sections of the above referenced specifications. The machinery complies with all essential requirements of the directives.

Signed:  Dated: 01/06/2025 Location: Leicestershire
Richard Cook, Director



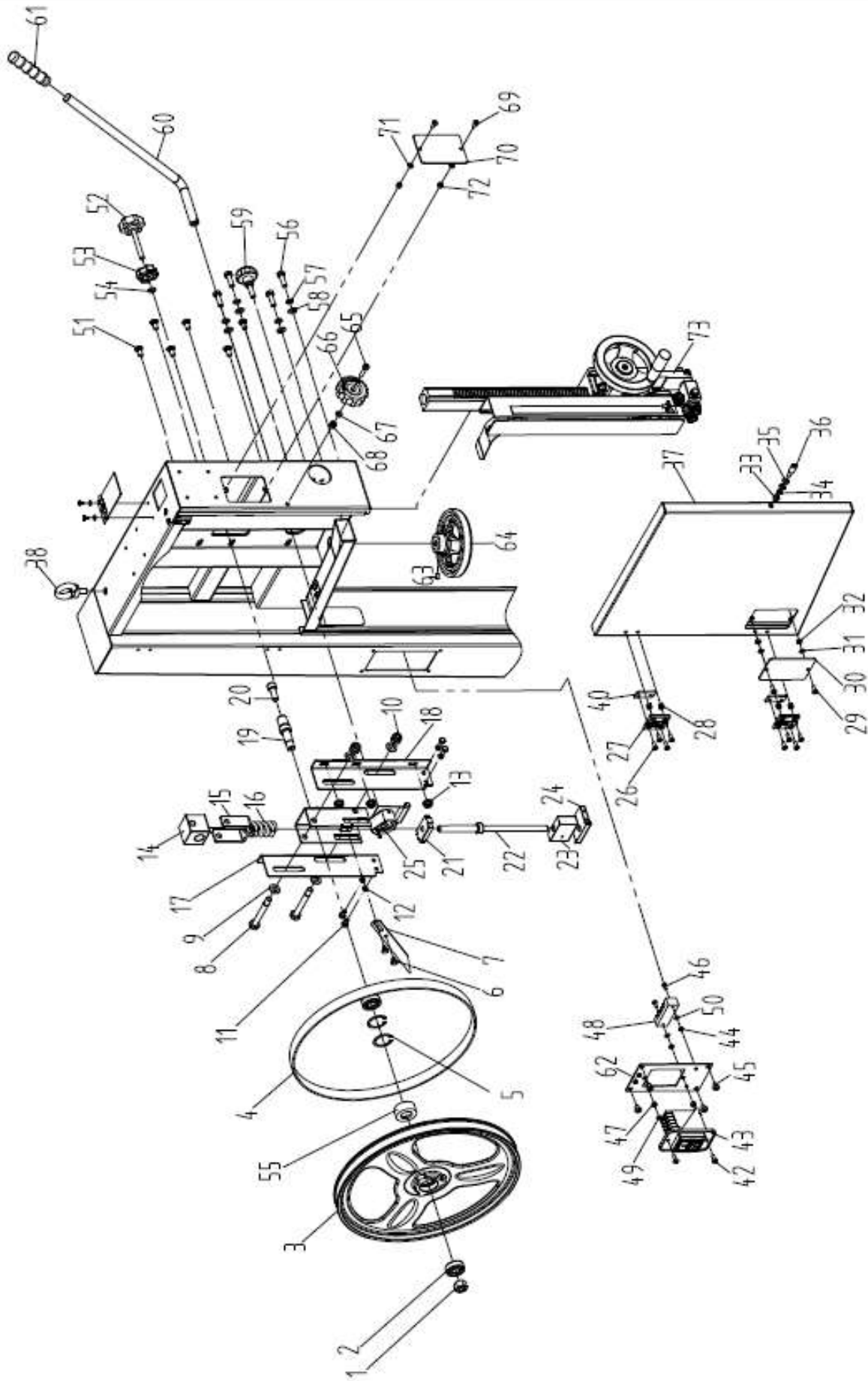
Please dispose of packaging for the product in a responsible manner. It is suitable for recycling. Help to protect the environment, take the packaging to the local amenity tip and place into the appropriate recycling bin.



Only for EU countries
Do not dispose of electric tools together with household waste material!
In observance of European Directive 2002/96/EC on waste electrical and electronic equipment (EEE) and its implementation in accordance with national law, electric tools that have reached the end of their life must be collected separately and returned to an environmentally compatible recycling facility.
Your local refuse amenity will have a separate collection area for EEE goods



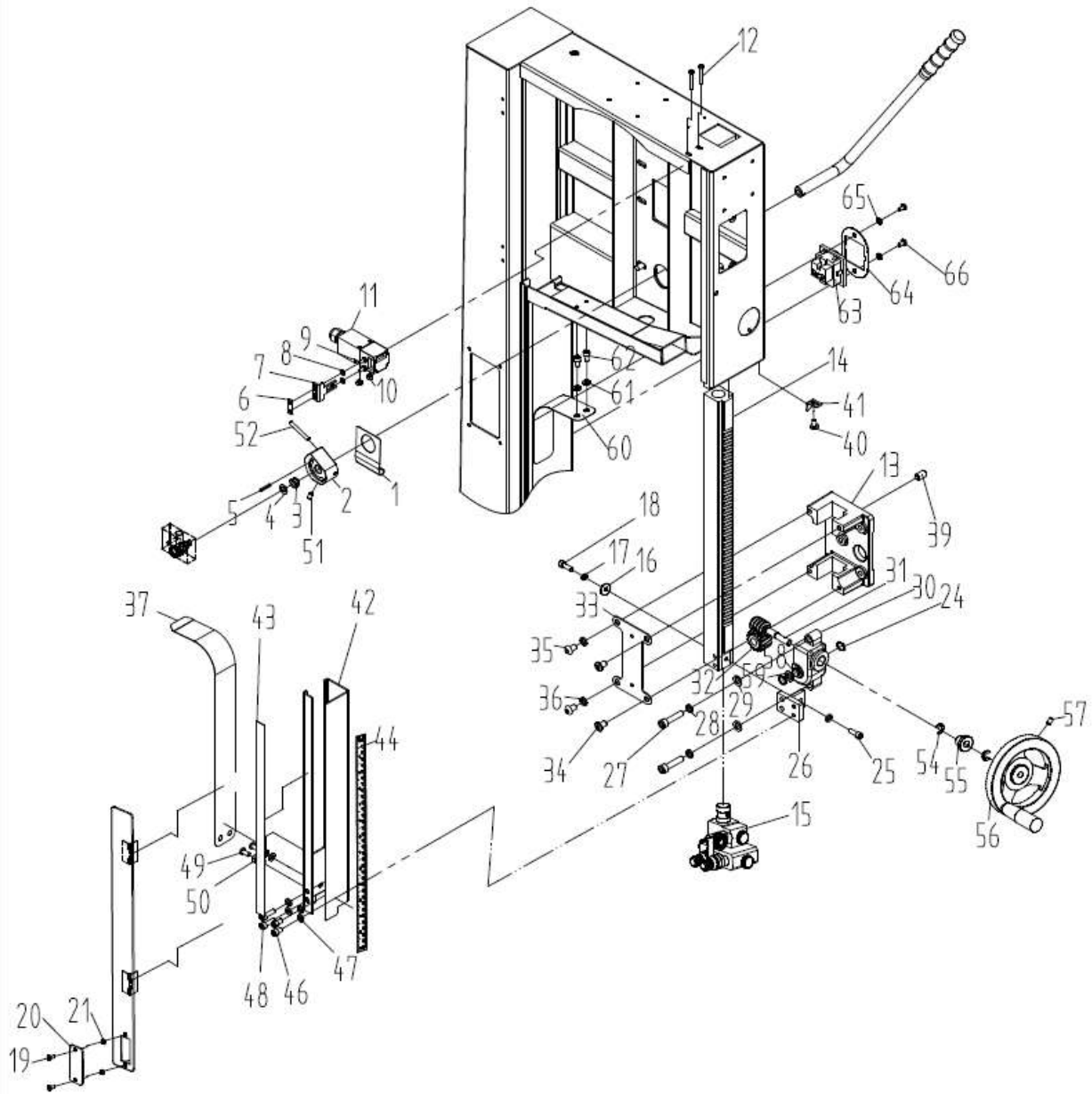
Parts Diagram A



Parts List A

Part Number	Description	Part Number	Description
C14BX#A01	Hex.nut M14X1.5 LH	C14BX#A36	Door stud
C14BX#A02	Bearing 6202	C14BX#A37	Upper door
C14BX#A03	Upper wheel	C14BX#A38	Eye bolt M10
C14BX#A04	PU tire	C14BX#A40	hinge plate
C14BX#A05	"C"ring Φ 35	C14BX#A42	Screw M5X12
C14BX#A06	Bolt	C14BX#A43	Switch DZ07C
C14BX#A07	Pointer	C14BX#A44	Hex nut M4
C14BX#A08	Long bolt M10X80	C14BX#A45	Screw M6X8
C14BX#A09	Washer M10	C14BX#A46	Screw M4X10
C14BX#A10	Hex lock nut M10	C14BX#A47	Hex nut M5
C14BX#A11	Hex bolt M6X12	C14BX#A48	Terminal block
C14BX#A12	Spring washer M6	C14BX#A49	Washer M5
C14BX#A13	Flange hex nut M8	C14BX#A50	Washer M4
C14BX#A14	Upper shaft block	C14BX#A51	Square neck bolt M8X16
C14BX#A15	U-plate	C14BX#A52	Adjusting knob
C14BX#A16	Spring	C14BX#A53	Lock knob
C14BX#A17	Left support plate	C14BX#A54	Spring washer M8
C14BX#A18	Right support plate	C14BX#A55	upper spacer bush
C14BX#A19	Upper shaft	C14BX#A56	Hex bolt M8X25
C14BX#A20	Screw M10X25	C14BX#A57	Spring washer M8
C14BX#A21	Threaded plate	C14BX#A58	Washer M8
C14BX#A22	Adjusting screw	C14BX#A59	Locking handle
C14BX#A23	Fixed bracket	C14BX#A60	Press shaft
C14BX#A24	Support block	C14BX#A61	Handle
C14BX#A25	Eccentric wheel assembly	C14BX#A62	Main panel
C14BX#A26	Screw M5X14	C14BX#A63	Set screw M6X10
C14BX#A27	Hinge 40mm	C14BX#A64	Tension hand wheel
C14BX#A28	Hex locking nut M5	C14BX#A65	Screw M6X25
C14BX#A29	Screw M5X12	C14BX#A66	Lock knob
C14BX#A30	Looking window	C14BX#A67	Washer M6
C14BX#A31	Washer M5	C14BX#A68	Hex locking nut M6
C14BX#A32	Hex nut M5	C14BX#A69	Screw M5X12
C14BX#A33	Hex nut M6	C14BX#A70	Looking window
C14BX#A34	Spring washer M6	C14BX#A71	Washer M5
C14BX#A35	Washer M6	C14BX#A71	Hex nut M5
		C14BX#A73	Blade guard assembly

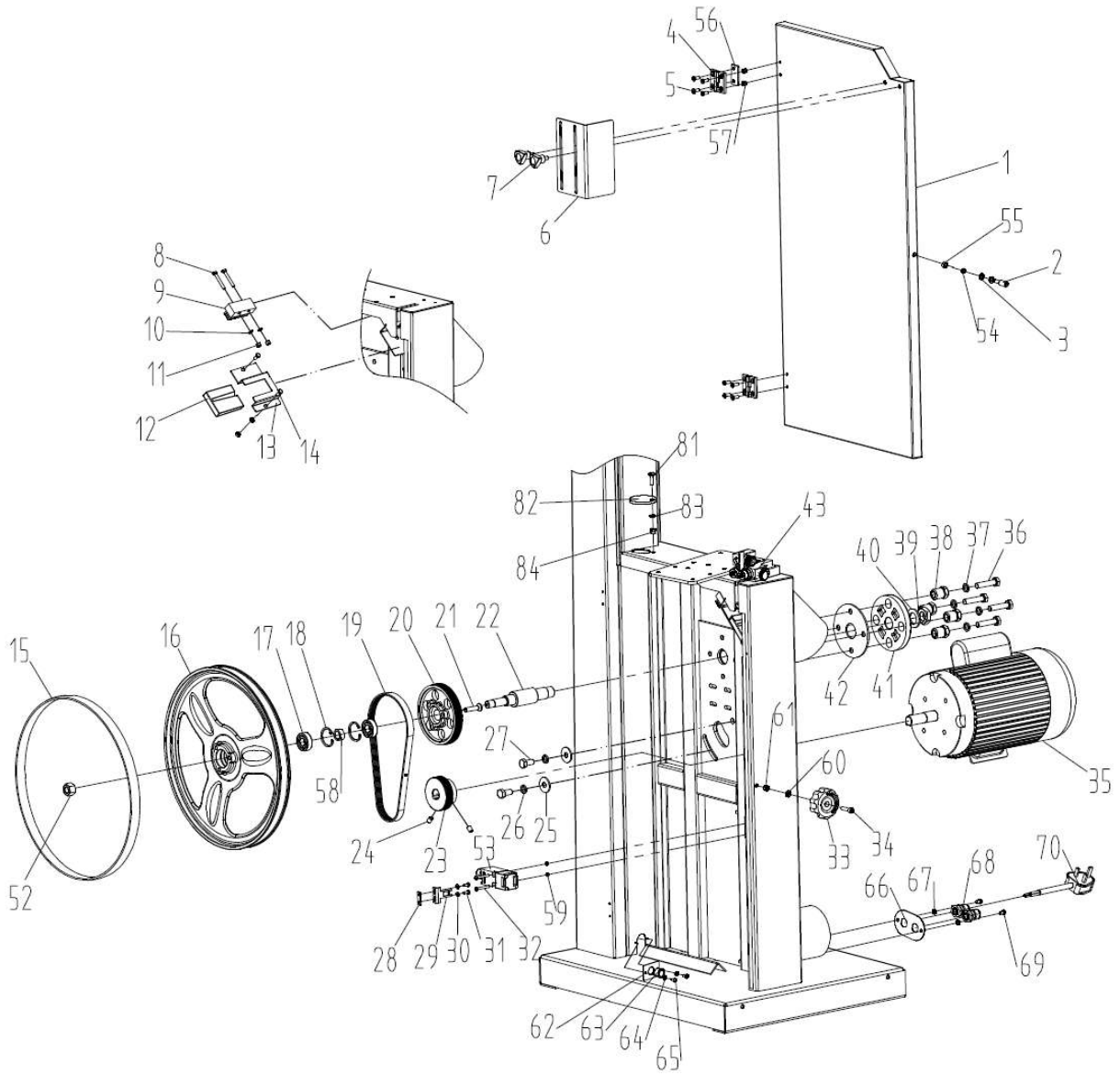
Parts Diagram B



Parts List B

Part Number	Description	Part Number	Description
C14BX#B01	Spring plate	C14BX#B34	Special screw M8X12
C14BX#B02	Eccentric wheel	C14BX#B35	Screw M8X12
C14BX#B03	Hex locking nut M8	C14BX#B36	Spring washer M8
C14BX#B04	Thin spring washer M8	C14BX#B37	Long spring plate
C14BX#B05	Spring pin M4X20	C14BX#B40	Screw M6X10
C14BX#B06	Key fixing plate	C14BX#B41	Pointer
C14BX#B07	Key of QKS8	C14BX#B42	Protective plate
C14BX#B08	Washer M4	C14BX#B43	Soft magnet
C14BX#B09	Screw M4X10	C14BX#B44	Scale
C14BX#B10	Hex nut M4	C14BX#B46	Screw M6X10
C14BX#B11	Door switch QKS8	C14BX#B47	Washer M6
C14BX#B12	Screw M4X30	C14BX#B48	Screw M6X20
C14BX#B13	Guide bar bracket	C14BX#B49	Screw M6X12
C14BX#B14	Guide bar	C14BX#B50	Hex nut M6
C14BX#B15	Upper blade guide	C14BX#B51	Set screw M6X8
C14BX#B16	Large washer M6	C14BX#B52	Spring pin 5X40
C14BX#B17	Spring washer M6	C14BX#B53	Long screw
C14BX#B18	Screw M6X20	C14BX#B54	"E"ring Φ 8
C14BX#B19	Screw M4X10	C14BX#B55	Bush
C14BX#B20	Window	C14BX#B56	Hand wheel
C14BX#B21	Hex.nut M4	C14BX#B57	Set screw M6X8
C14BX#B24	"C"ring Φ 13	C14BX#B58	Shaft
C14BX#B25	Screw M6X16	C14BX#B59	Small washer M12
C14BX#B26	Support bracket	C14BX#B60	Short spring plate
C14BX#B27	Screw M8X35	C14BX#B61	Washer M6
C14BX#B28	Spring washer M8	C14BX#B62	Screw M6X8
C14BX#B29	Washer M8	C14BX#B63	Plug plate
C14BX#B30	Gear box	C14BX#B64	Socket
C14BX#B31	Worm shaft	C14BX#B65	Washer M5
C14BX#B32	Gear	C14BX#B66	Screw M5X8
C14BX#B33	Protective plate		

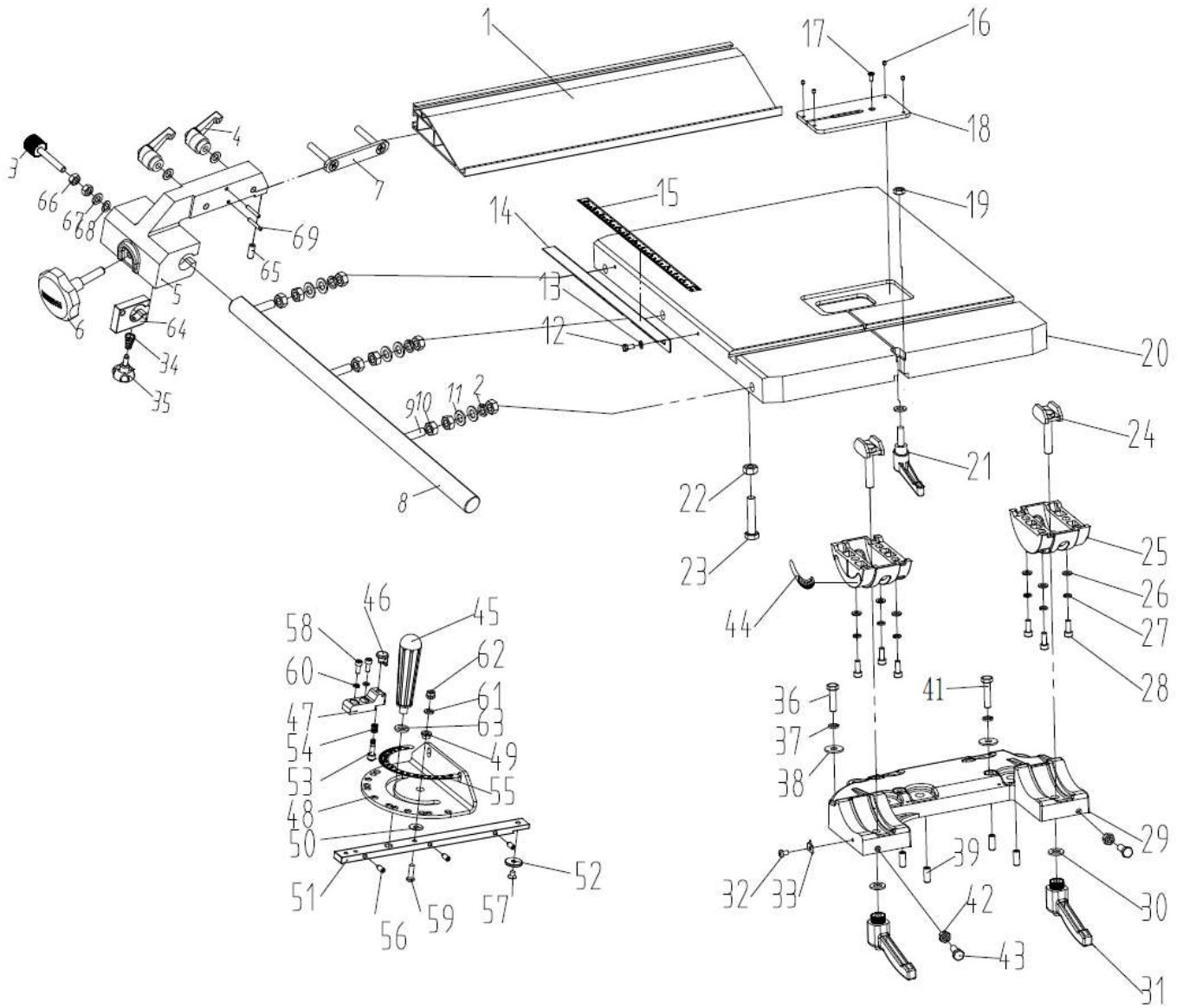
Parts Diagram C



Parts List C

Part Number	Description	Part Number	Description
C14BX#C01	Lower door	C14BX#C33	Lock knob
C14BX#C02	Door stud	C14BX#C34	Screw M6X25
C14BX#C03	Washer M6	C14BX#C35	Motor
C14BX#C04	Hinge 40	C14BX#C35A	Start Capacitor 35uf 450V
C14BX#C05	Screw M5X14	C14BX#C36	Hex bolt M10X45
C14BX#C06	Lower blade guard	C14BX#C37	Spring washer M10
C14BX#C07	Lock knob	C14BX#C38	Adjust screw
C14BX#C08	Hex bolt M5X35	C14BX#C39	Hex nut M20X1.5
C14BX#C09	Wood brush	C14BX#C40	Washer M20
C14BX#C10	Washer M5	C14BX#C41	Spindle holder
C14BX#C11	Hex nut M5	C14BX#C42	Adjust plate
C14BX#C12	Insert block	C14BX#C43	Lower blade guide
C14BX#C13	Shelf	C14BX#C52	Hex nut M14X1.5-L
C14BX#C14	Hex bolt M5X10	C14BX#C53	Door switch QKS8
C14BX#C15	PU tire	C14BX#C54	Spring washer M6
C14BX#C16	Lower wheel	C14BX#C55	Hex nut M6
C14BX#C17	Bearing 6202	C14BX#C56	Hinge plate
C14BX#C18	"C"ring Φ 35	C14BX#C57	Hex locking nut M5
C14BX#C19	Drive Belt PJ610/240J 6J609	C14BX#C58	Lower space bush
C14BX#C20	Spindle pulley	C14BX#C59	Hex nut M4
C14BX#C21	Screw M8X35	C14BX#C60	Washer M6
C14BX#C22	Lower spindle	C14BX#C61	Hex locking nut M6
C14BX#C23	Motor pulley	C14BX#C62	Small plate
C14BX#C24	Set screw M8X8	C14BX#C63	Cable bush SK-16
C14BX#C25	Large washer M8	C14BX#C64	Washer M4
C14BX#C26	Spring washer M8	C14BX#C65	Screw M4X8
C14BX#C27	Hex bolt M8X20	C14BX#C66	Plug plate
C14BX#C28	Key fixing plate	C14BX#C67	Washer M5
C14BX#C29	Key of QKS8	C14BX#C68	Gland M16
C14BX#C30	Washer M4	C14BX#C69	Screw M5X8
C14BX#C31	Screw M4X10	C14BX#C70	Plug
C14BX#C32	Screw M4X30		

Parts Diagram D

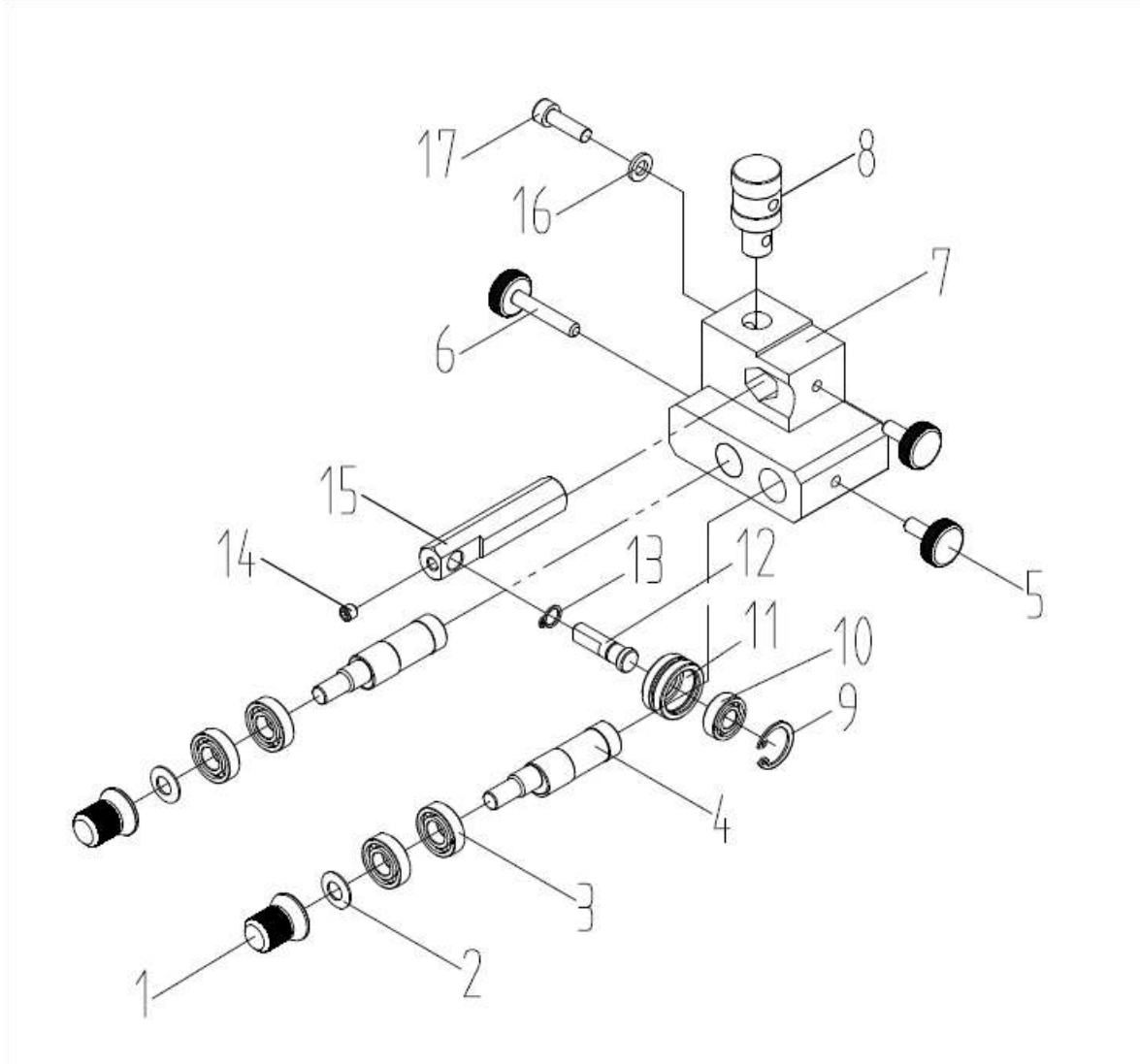


Parts List D

Part Number	Description	Part Number	Description
C14BX#D01	Aluminum fence	C14BX#D36	Hex bolt M8X30
C14BX#D02	Screw M8X16	C14BX#D37	Spring washer M8
C14BX#D03	Spring washer M8	C14BX#D38	Large washer M8
C14BX#D04	Locking lever M8	C14BX#D39	Set screw M8X20
C14BX#D05	Fence carrier	C14BX#D40	Fence body
C14BX#D06	Fence Lock knob	C14BX#D41	Hex bolt M8X35
C14BX#D07	Lock bar	C14BX#D42	Hex nut M8
C14BX#D08	Fence Rail	C14BX#D43	Hex bolt M8X20
C14BX#D09	Dual head bolt	C14BX#D44	Table Scale
C14BX#D10	Hex nut M8	C14BX#D45	Locking handle
C14BX#D11	Washer M8	C14BX#D46	Pull knob
C14BX#D12	Hex bolt M5X10	C14BX#D47	Pointer
C14BX#D13	Washer M5	C14BX#D48	Angle ruler
C14BX#D14	Scale plate	C14BX#D49	Flange bush
C14BX#D15	Fence Scale	C14BX#D50	Thin washer
C14BX#D16	Set screw M4X4	C14BX#D51	Mitre Guide Sliding bar
C14BX#D17	Screw M4X10	C14BX#D52	Special washer
C14BX#D18	Aluminum table insert	C14BX#D53	Sliding pin
C14BX#D19	Hex nut M8	C14BX#D54	Spring
C14BX#D20	Table	C14BX#D55	Mitre Guide Angle scale
C14BX#D21	Handle M8X30	C14BX#D56	Spring screw M6X12
C14BX#D22	Hex nut M10	C14BX#D57	Screw M6X8
C14BX#D23	Hex bolt M10X50	C14BX#D58	Screw M5X12
C14BX#D24	Slide block	C14BX#D59	Screw M6X20
C14BX#D25	Trunion	C14BX#D60	Spring washer M6
C14BX#D26	Washer M6	C14BX#D61	Washer M6
C14BX#D27	Spring washer M6	C14BX#D62	Hex locking nut M6
C14BX#D28	Screw M6X16	C14BX#D63	Washer M10
C14BX#D29	Trunion Bracket	C14BX#D64	Locate block HBS475-03
C14BX#D30	Washer M10	C14BX#D65	Plastic Set screw M12X16
C14BX#D31	Locking Lever M10X20	C14BX#D66	Hex. Nut M8
C14BX#D32	Screw M5X8	C14BX#D67	Washer 8mm
C14BX#D33	Pointer	C14BX#D68	Wave Washer 8mm
C14BX#D34	Plastic screw	C14BX#D69	Set Screw M6 x 30
C14BX#D35	Set screw M6X6		

5	Mitre Guide Angle scale	1
56	Spring screw	M6X12 3
57	Screw	M6X8 1
58	Screw	M5X12 2
59	Screw	M6X20 1
60	Spring washer	M6 1

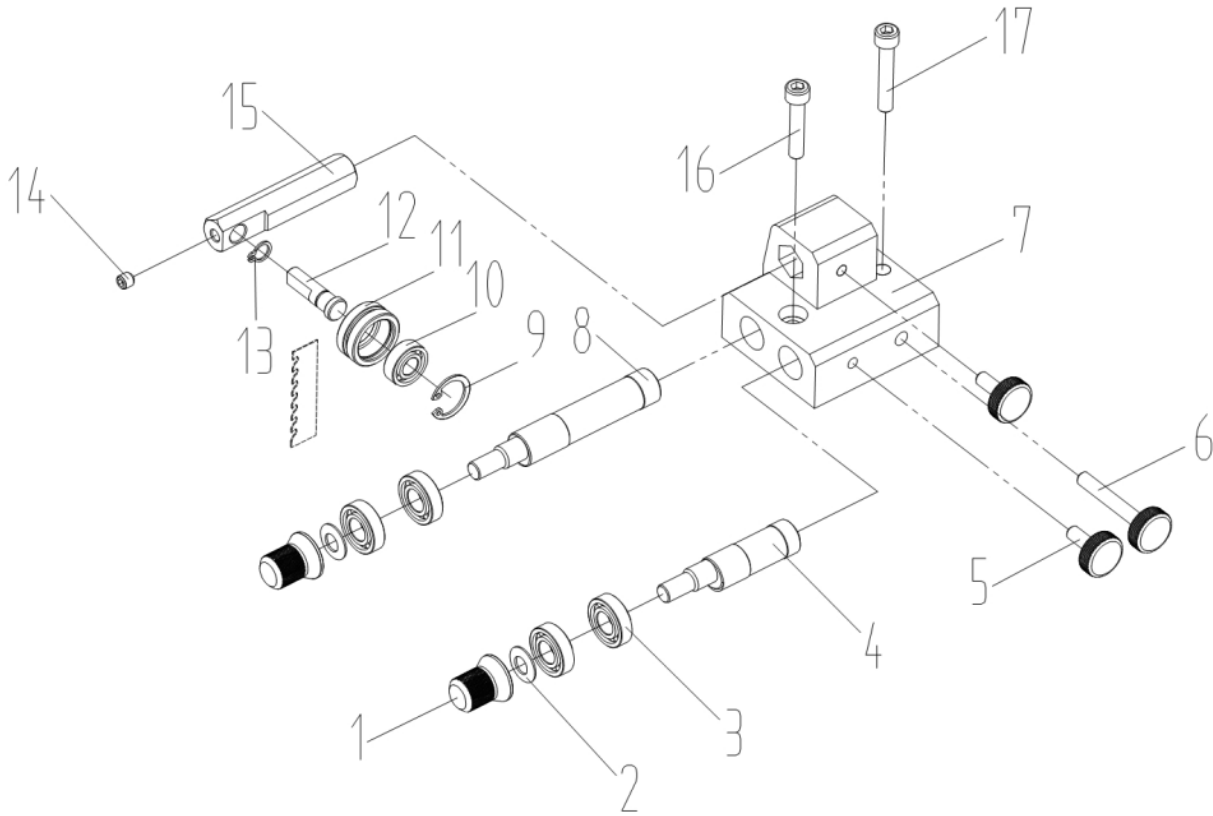
Parts Diagram E



Parts List E

Part Number	Description	Part Number	Description
C14BX#E01	Front Cam Knob	C14BX#E09	"C"ring $\Phi 19$
C14BX#E02	Special washer	C14BX#E10	Rear Thrust Bearing 698RZ
C14BX#E03	Bearing 6900RZ	C14BX#E11	Thrust bearing holder
C14BX#E04	Short shaft	C14BX#E12	Adjust shaft
C14BX#E05	Knurled lock screw	C14BX#E13	"C"ring $\Phi 8$
C14BX#E06	Knurled lock screw	C14BX#E14	Set screw M6X6
C14BX#E07	Upper guide bracket	C14BX#E15	Spacing sleeve
C14BX#E08	Link pin	C14BX#E16	Washer M6
		C14BX#E17	Screw M6X20

PARTS DIAGRAM F



Parts List F

Part Number	Description	Part Number	Description
C14BX#F01	Front Cam Knob	C14BX#F09	"C" ring $\Phi 19$
C14BX#F02	Special washer	C14BX#F10	Rear Thrust Bearing 698RZ
C14BX#F03	Guide Bearing 6900RZ	C14BX#F11	Thrust bearing holder
C14BX#F04	Short shaft	C14BX#F12	Adjust shaft
C14BX#F05	Knurled lock knob	C14BX#F13	"C" ring $\Phi 8$
C14BX#F06	Knurled lock knob	C14BX#F14	Set screw M6X6
C14BX#F07	Lower guide bracket	C14BX#F15	Spacing sleeve
C14BX#F08	Long shaft	C14BX#F16	Screw M6X30
		C14BX#F17	Screw M6X35



Woodworking machinery at its best!

Last Updated March 2026

**Charnwood, Cedar Court, Walker Road,
Hilltop Industrial Estate, Bardon Hill, Leicestershire, LE67 1TU**

**Tel. 01530 516 926 Fax. 01530 516 929
email: sales@charnwood.net website: www.charnwood.net**