

# Charnwood

## W215 Universal Folding Floorstand

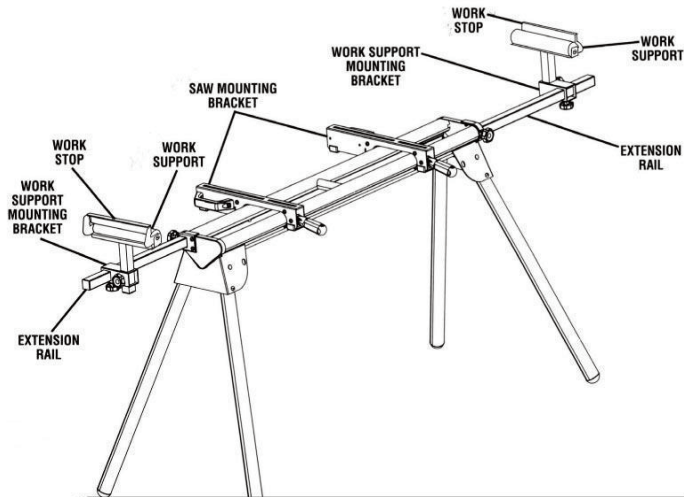
### Miter Saw Stand

#### Save this manual

You will need this manual for the safety warnings and precautions, assembly, operating, inspection. Keep your invoice with this manual. Write the invoice number. Keep this manual and invoice in a safe and dry place for future reference.

#### Packing List

- Miter Saw Stand
- Saw mounting brackets (2)
- Work supports (2)
- Work support mounting brackets (2)
- Work stops (2)
- Extension adjustment knobs (M8 x 25 mm) (2)
- Length adjustment knobs (M8 x 15 mm) (2)
- Height adjustment knobs (M8 x 15 mm) (2)
- Work stop adjustment knobs (2)
- Carriage bolts (M6 x 60 mm) (2)
- Carriage bolts (5/16" x 2") (4)
- Flat washers (4)
- Lock washers (4)
- Nuts (4)
- Operator's manual



#### ! WARNING

- If any parts are missing do not operate this tool until the missing parts are replaced.
- Do not attempt to modify this tool or create accessories not recommended for use with this tool.
- Do not connect to power supply until assembly is complete.

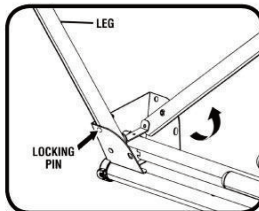
#### Unpacking

This product requires some assembly.

- Carefully remove the stand and any accessories from the box. Make sure that all items listed in the packing list are included.
- Do not discard the packing material until you have carefully inspected and satisfactorily operated the tool.

#### Preparing the stand

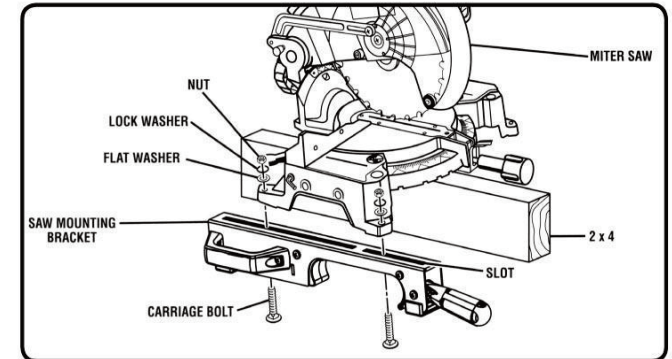
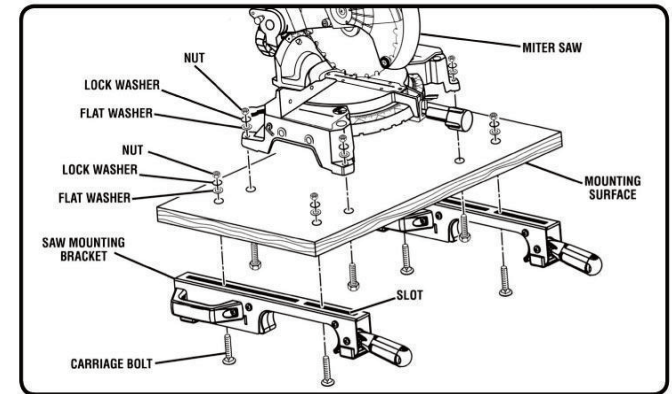
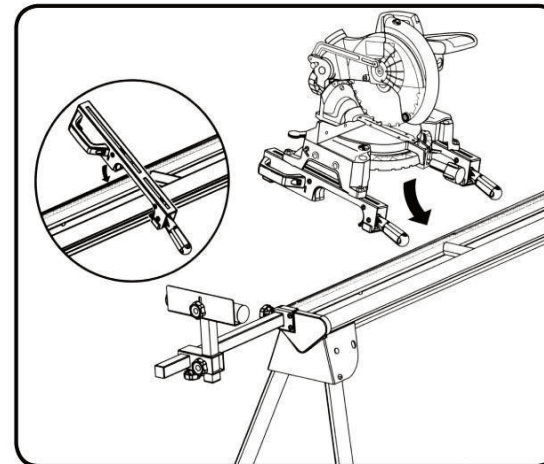
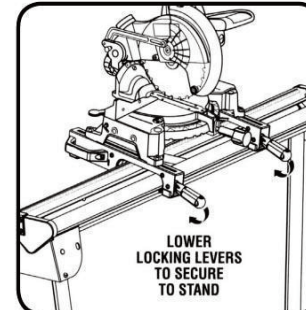
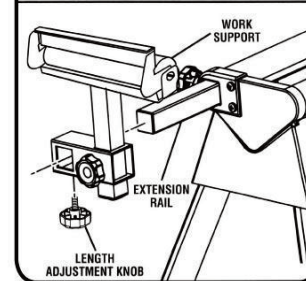
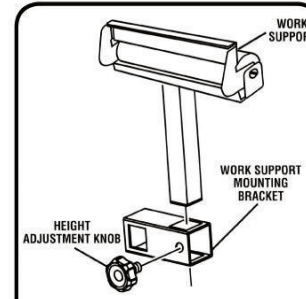
- Lay the stand's top surface down on the floor with the folded legs on top
- Push in a leg locking pin and rotate that leg up until the locking pin clicks into place.
- Repeat with the remaining three legs.
- Lift the stand and place it in an upright position.
- Check to ensure the stand is stable and all the legs have the locking pins engaged.



Charnwood, Cedar Court, Walker Road,  
Bardon, Leicestershire, LE67 1TU

Tel. 01530 516 926

[www.charnwood.net](http://www.charnwood.net)



If the bracket is too loose or too tight adjust the bracket adjustment screw

