

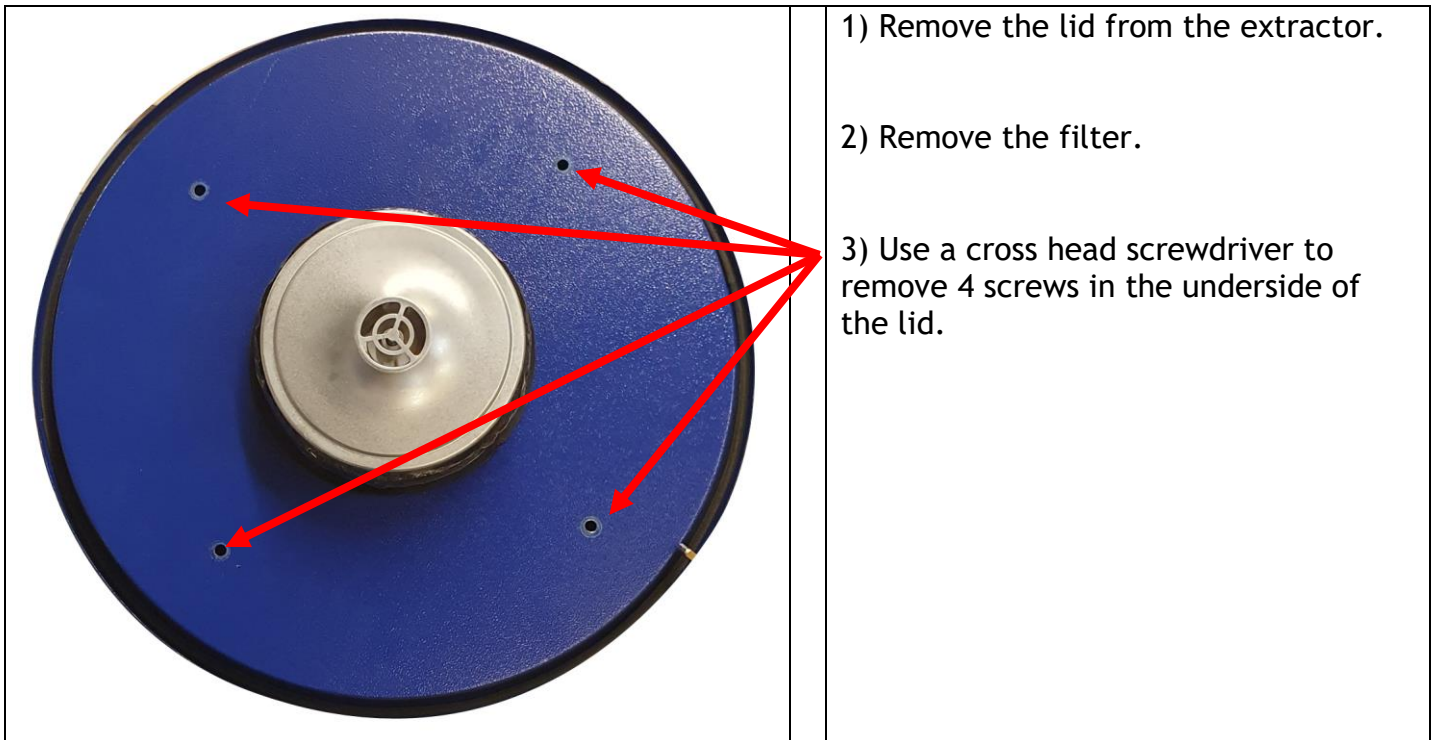


Woodworking machinery at its best!

Symptom: The DC50AUTO Extractor runs correctly in manual mode, but behaves erratically or will not start in Auto mode:

Cause: Failed relay on the PCB

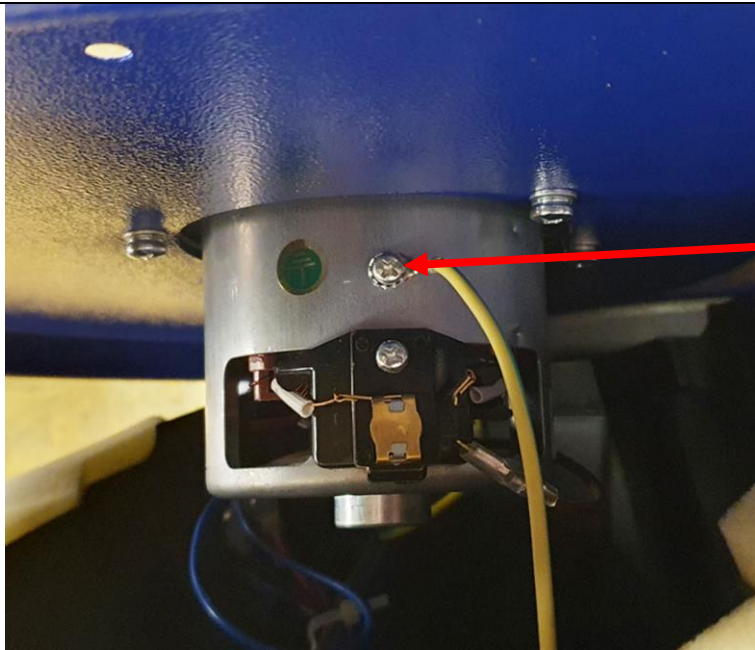
Solution: The PCB needs to be replaced.



Tel. 01530 516926 email; sales@charnwood.net

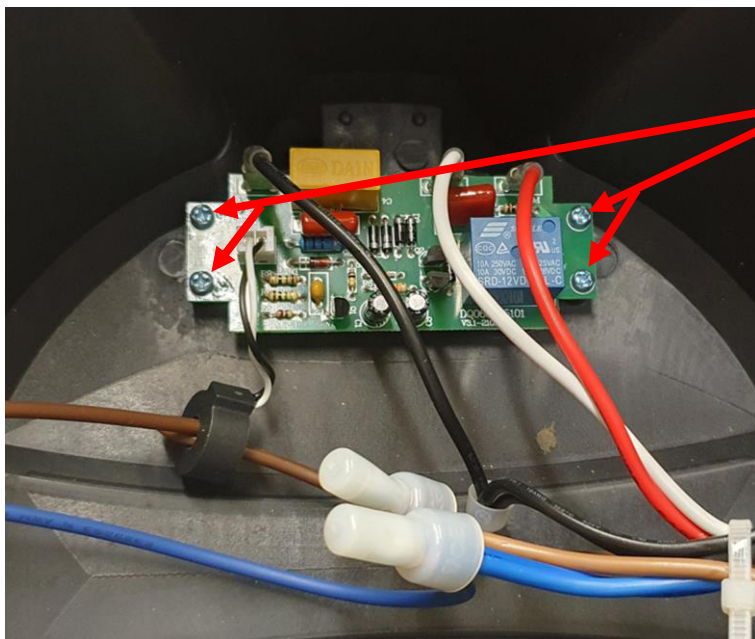
Website: www.charnwood.net

Charnwood Machinery Ltd, Cedar Court, Walker Road, Bardon Hill,
Leicestershire, LE67 1TU, England



4) Move the lid cover away from the lid a little and then locate the earth wire fastening.

Remove the fastening screw.



5) You can now access the inside of the lid.

Remove 4 screws which hold the PCB in place.

6) Remove 4 wires from the PCB.

Black, Red and White just pull away from the spade connector.

The black & white disconnects by pulling the white block away from the board.

7) Follow these instructions in reverse to fit the new PCB.

Tel. 01530 516926 email; sales@charnwood.net

Website: www.charnwood.net

Charnwood Machinery Ltd, Cedar Court, Walker Road, Bardon Hill,
Leicestershire, LE67 1TU, England