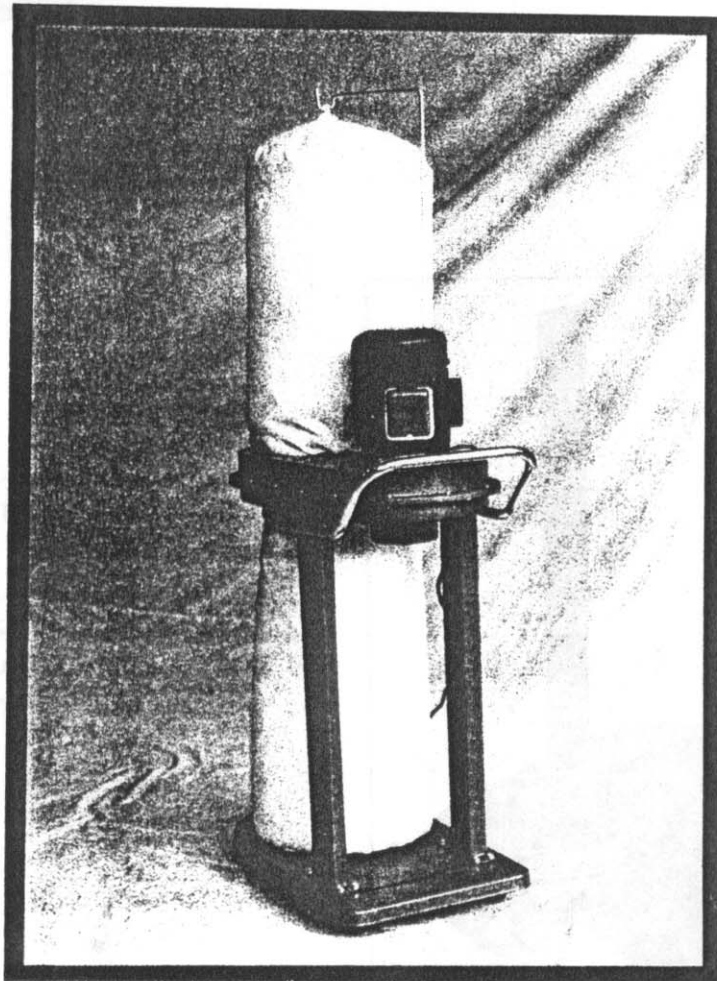
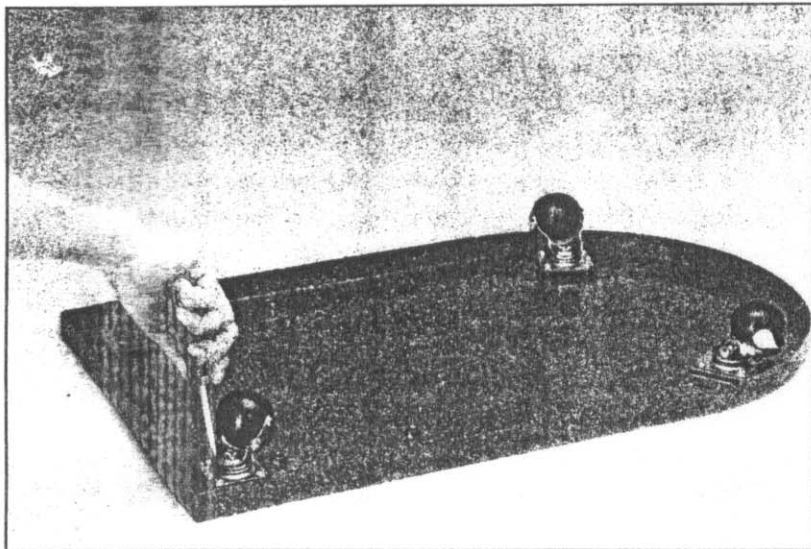


**OWNER'S
OPERATING MANUAL**

DUST COLLECTOR

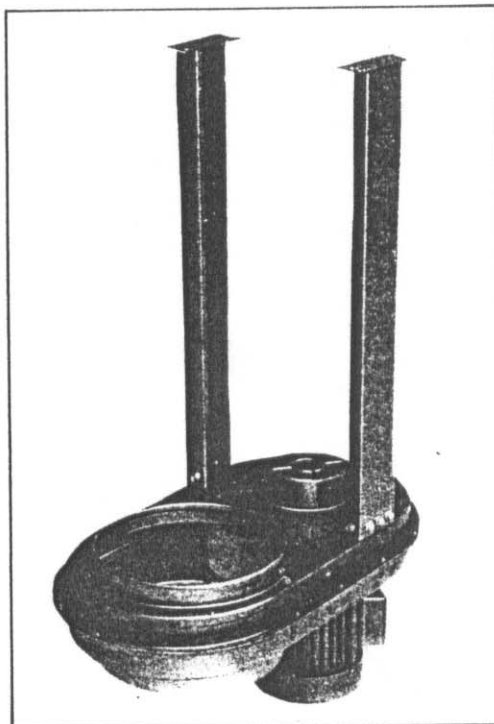


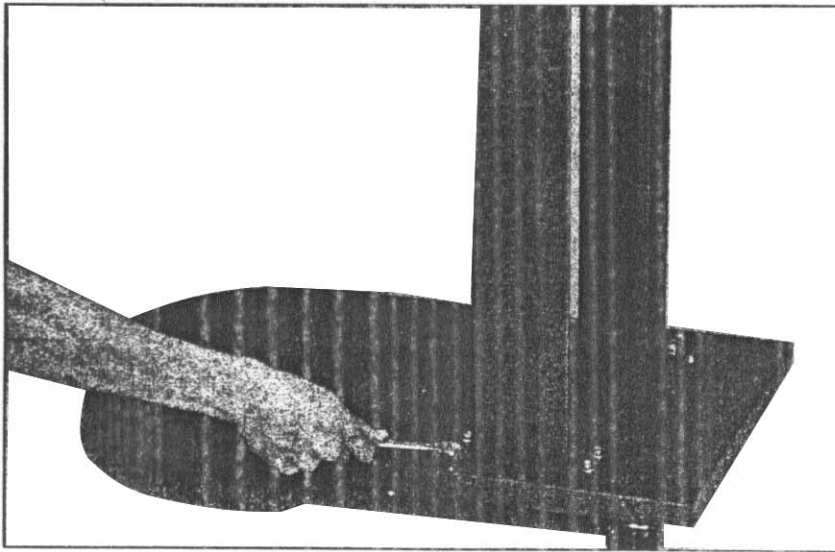
ASSEMBLY



TO ASSEMBLE, FIRST PLACE THE BASE PLATE UPSIDE DOWN AND ATTACH THE FOUR CASTERS TO THE HOLES PROVIDED AND TIGHTEN WITH THE WRENCH. FIG. 1.

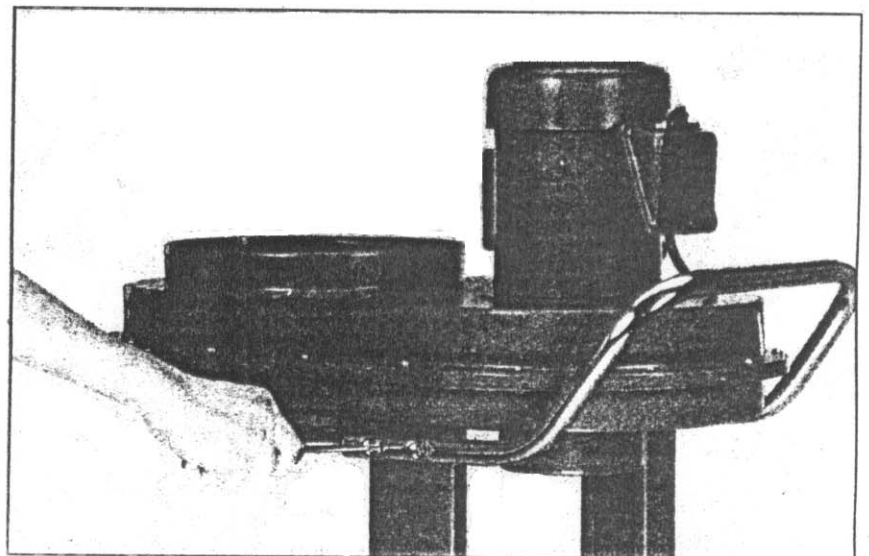
COLLECTOR BODY DOWN
ATTACH INSTALL THE TWO
FIXED SUPPORT TO THE
DOUBLE USING FOUR 5/16"x
1/2" HEX FLANGE HEAD
SCREWS TIGHTEN ALL FAS-
TENERS SECURELY. FIG. 2.

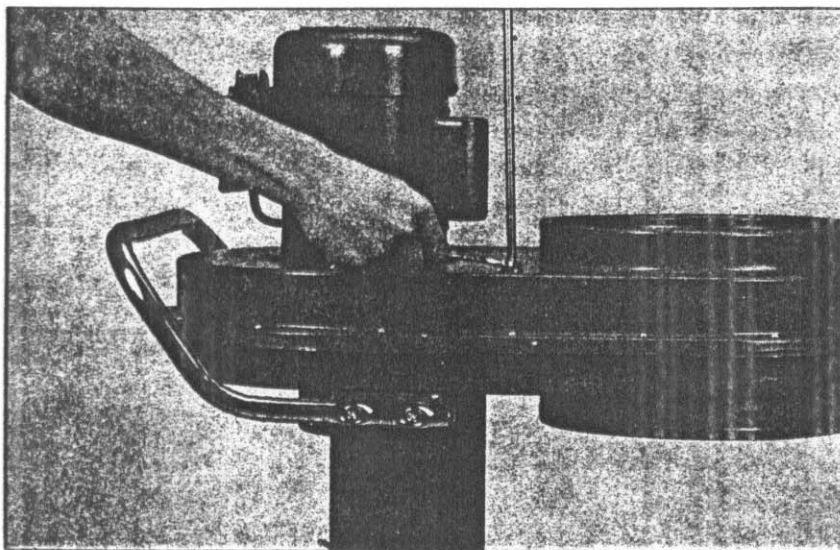




BASE PLATE UPSIDE EQUAL OR FAIR THE TWO FIXED SUPPORT USING EIGHT 5/16" x 1/2" HEX FLANGE HEAD SCREWS. TIGHTEN ALL FASTENERS SECURELY. FIG. 3

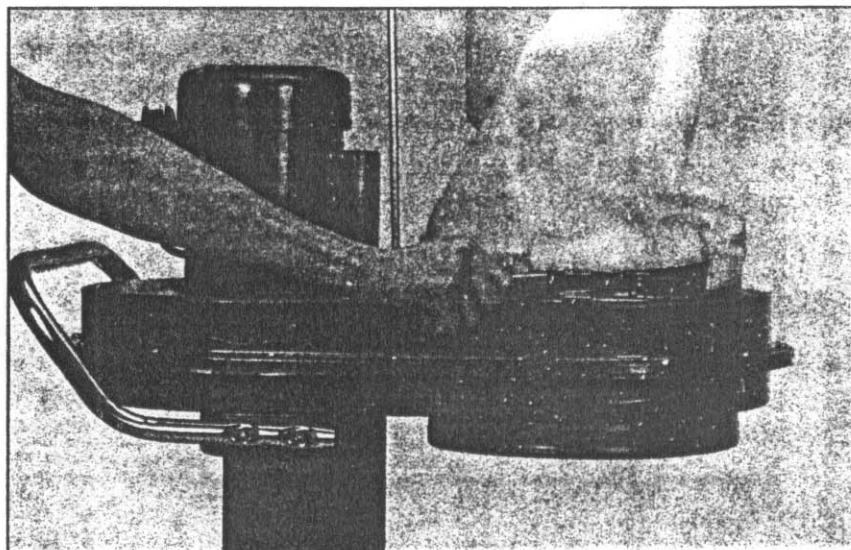
INSTALL THE HANDLE TO THE FIXED SUPPORT OUTSIDE USING FOUR 5/16"x 1-1/4" FLAT HEAD SCREWS. TIGHTEN WITH A SCREW DRIVER. FIG. 4



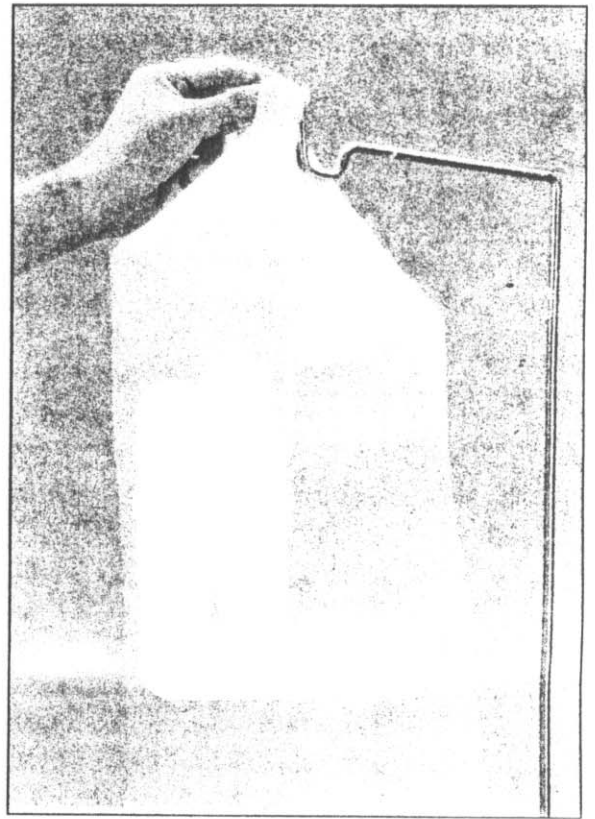


ATTACH THE UPPER BAG SUPPORT TO THE COLLECTOR BODY USING WASHER AND NUT TIGHTEN ALL FASTENERS SECURELY. FIG. 5

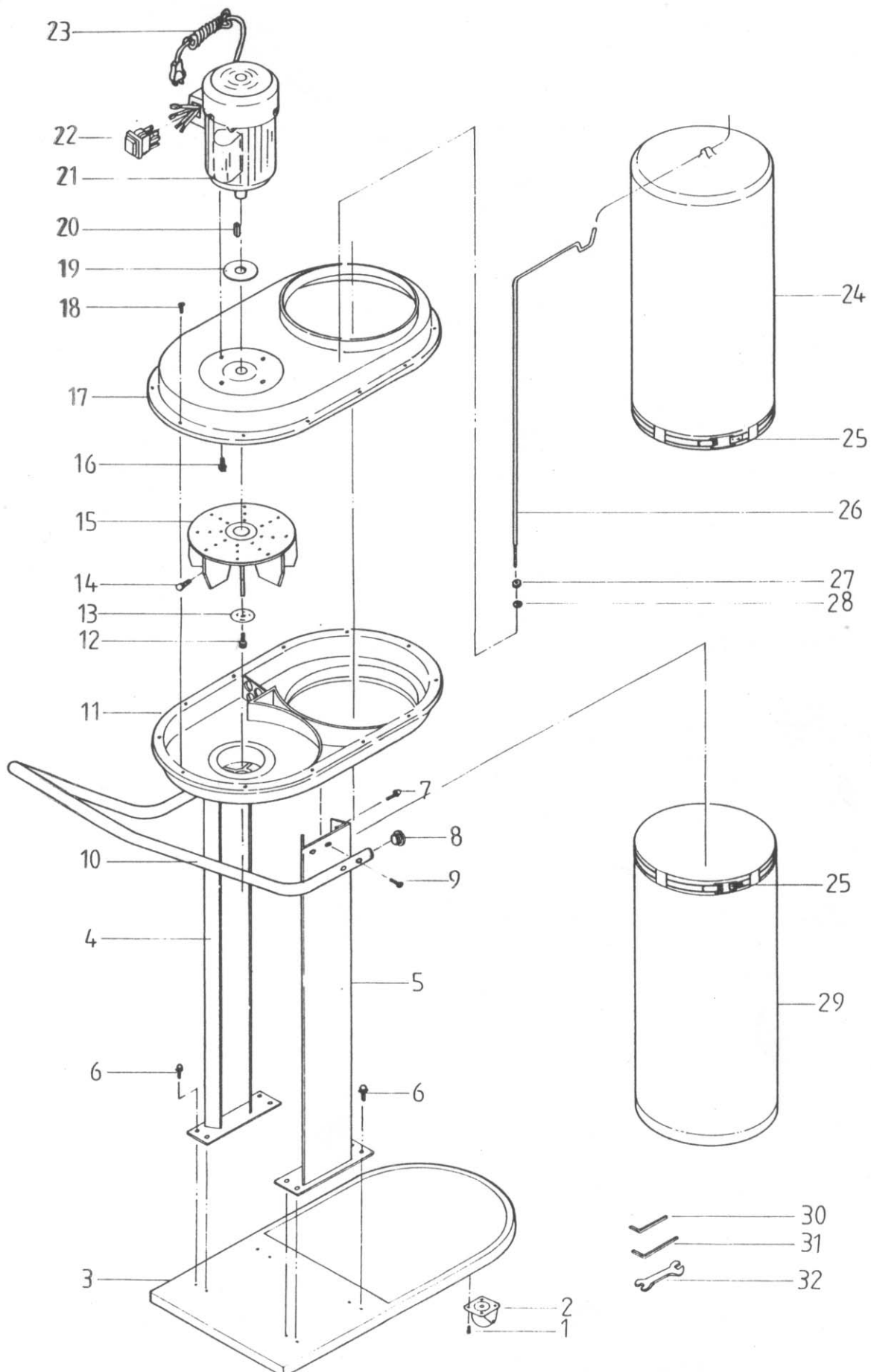
NOW ATTACH THE FILTER AND COLLECTOR BAGS TO THE COLLECTOR BODY USING TWO HOSE CLAMPS. TIGHTEN WITH SCREW DRIVER FIG. 6.



AFTER THE BAG ARE SECURED. THE
UPPER BAG SHOULD BE HUNG FROM
THE UPPER BAG SUPPORT. FIG. 8



PARTS DIAGRAM



PARTS LIST

KEY	DESCRIPTION	QTY
1	SCREW $\frac{3}{16} \times \frac{3}{8}$ L PAN. FLG. HD.	16
2	CASTER	4
3	BASE PLATE	1
4	LEFT FIXED SUPPORT .	1
5	RIGHT FIXED SUPPORT	1
6	SCREW $\frac{5}{16} \times \frac{1}{2}$ L HEX. FLG. HD.	8
7	SCREW $\frac{5}{16} \times \frac{1}{2}$ L HEX. FLG. HD.	4
8	CLOSER PIPE	2
9	SCREW $\frac{5}{16} \times 1\frac{1}{4}$ L FL. HD.	4
10	HANDLE BAR	1
11	DOWN-COLLECTOR BODY	1
12	SCREW M6X 20L HEX. SOC. HD.	1
13	WASHER	1
14	SET SCREW $\frac{5}{16} \times \frac{5}{16}$ SOC. HD.	2
15	TURBO FAN	1
16	SCREW $\frac{1}{4} \times \frac{1}{2}$ L HEX. FLG. HD.	4
17	UP-COLLECTOR BORY	1
18	SCREW $\frac{3}{16} \times \frac{3}{8}$ L PAN. FLG. HD.	16
19	PACKING	1
20	KEY 5X5X25mm	1
21	MOTOR	1
22	SWITCH	1
23	POWER CORD	1
24	FILTER BAG	1
25	HOSE CLAMPS	2
26	UPPER BAG SUPPORT	1
27	NUT $\frac{5}{16}$	1
28	WASHER $\frac{5}{16}$	1
29	COLLECTOR BAG	1
30	ALLEN WRENCH 4mm	1
31	ALLEN WRENCH 5mm	1
32	OPEN END WRENCH 12mm	1