

charnwood

Woodworking machinery at its best!

6" X 4" DISC & BELT SANDER OPERATING INSTRUCTIONS

MODEL: W408



**Charnwood, Cedar Court, Walker Road,
Bardon, Leicestershire, LE67 1TU**

**Tel. 01530 516 926 Fax. 01530 516 929
email; sales@charnwood.net website; www.charnwood.net**

□ UNPACKING

When unpacking, check to make sure that all the parts are included.

- A. Sander
- B. Miter gauge assembly
- C. Work stop
- D. Table
- E. Stud
- F. Handle with washer

Not shown:

Abrasive disc

Knobs

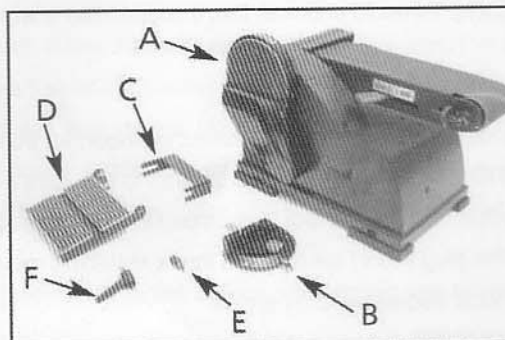
Four feet

Four mounting brackets

Two M6X16 socket head bolts

Four M6X16 hex head bolts

Two m6 lock washer



Six m6 flat washer

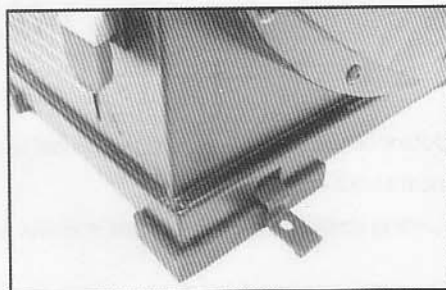
Four m6 hex nut

Hex wrench and open wrench

□ ASSEMBLY INSTRUCTIONS

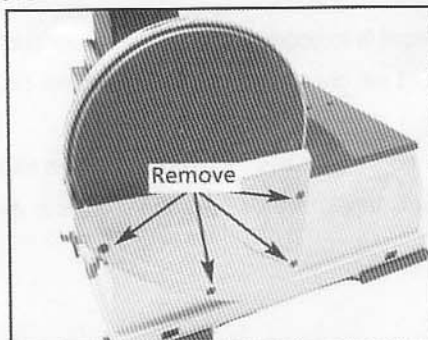
▲Mount sander

1. Carefully set the Belt Sander on its side.
2. Find four rubber feet in the parts bag.
3. Press-fit each rubber Foot over the lip of the Base corner.
4. Sander can be installed on a workbench or a tool stand using bolts, and hex nuts, and mounting brackets.



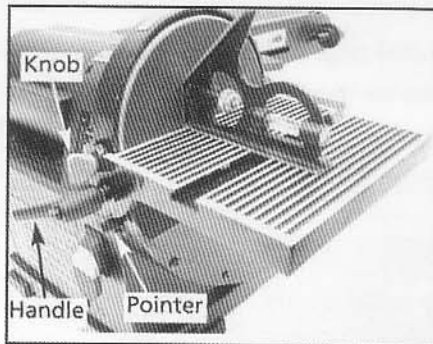
▲Attach abrasive disc

1. Remove disc cover by loosening and removing four screws.
2. Peel protective paper from the back of the abrasive disc.
3. Center the abrasive disc onto the aluminum disc and press on firmly and evenly.
4. Replace disc cover.



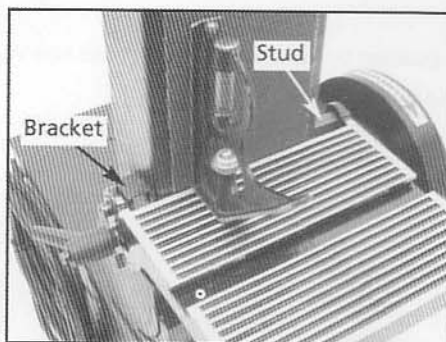
▲Table Installation

1. Position table on disc guard and attach using knobs.
2. Thread locking handle through table and into disc guard.
3. Using a combination square, set the table perpendicular to the disc, and secure in position. If necessary, set pointer at 0°.



To use table with the belt.

1. Thread stud into belt housing.
2. Position table over stud and bracket. Secure table using two knob.
3. Thread locking handle through table into bracket.
4. Using a combination square, set the table perpendicular to the belt and secure in position. if necessary, set the pointer to 0°.

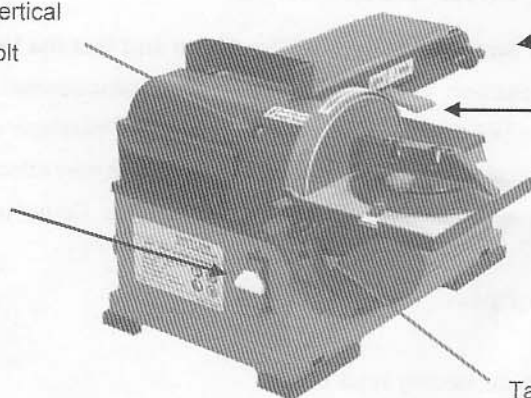


□ OPERATING INSTRUCTIONS

▲Controls and Adjustments

Horizontal to Vertical
Pivot Socket bolt

Switch



Belt Tracking
Adjusting Knob

Belt Tension
Lever

Table Angle Scale

▲Sanding Safety Tips

1. Always maintain a maximum of 1/16 inch clearance between the table and the sanding Disc.
2. **CAUTION: Do not use the right side of the disc for sanding. The material could kick back.**
3. **Hold material securely while sanding to avoid kick back.**

▲Leveling Table Assembly

During this and other procedures, refer to the photos on the previous page and the Assembly Drawing on the last page.

1. Place a combination square on the Table so that it also touches the Sanding Disc.
If the Table is 90 degrees to the Sanding Paper, the square is flush on the Pad.
2. If the Table is not 90 degrees with the Pad, loosen the Table Angle Adjusting Knob and tilt the Table until the square is flush with the Pad.
3. Retighten the Knob to secure the table.
4. Loosen the angle Pointer screw and adjust it so that it points to 90 degrees.

▲Adjusting the Sanding Belt Tracking

1. Turn the Belt Sander On.
If the belt looks like it is going to slide off either roller, the belt tracking needs to be adjusted.
2. Turn the Belt Tracking Adjusting Knob until the belt rides on the center of the Idle Roller and Drive Drum.

▲Adjusting the Sanding Belt for Vertical Operation

Caution: Never make adjustments to the Belt Sander without first unplugging the line cord from the electrical outlet.

1. Loosen socket head bolt that is threaded into pivot bracket.
2. Tilt belt assembly to desired position. Secure belt assembly position by tightening socket head bolt in pivot bracket.
3. Adjustable positive stops are provided for both horizontal and vertical positions.



□ INSPECTION, MAINTENANCE, AND CLEANING

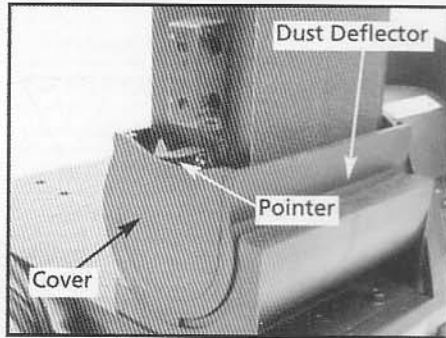
WARNING! Make sure the Power Switch of the Belt Sander is in its "OFF" position and that the tool is unplugged from its electrical outlet before performing any inspection, maintenance, or cleaning procedures.

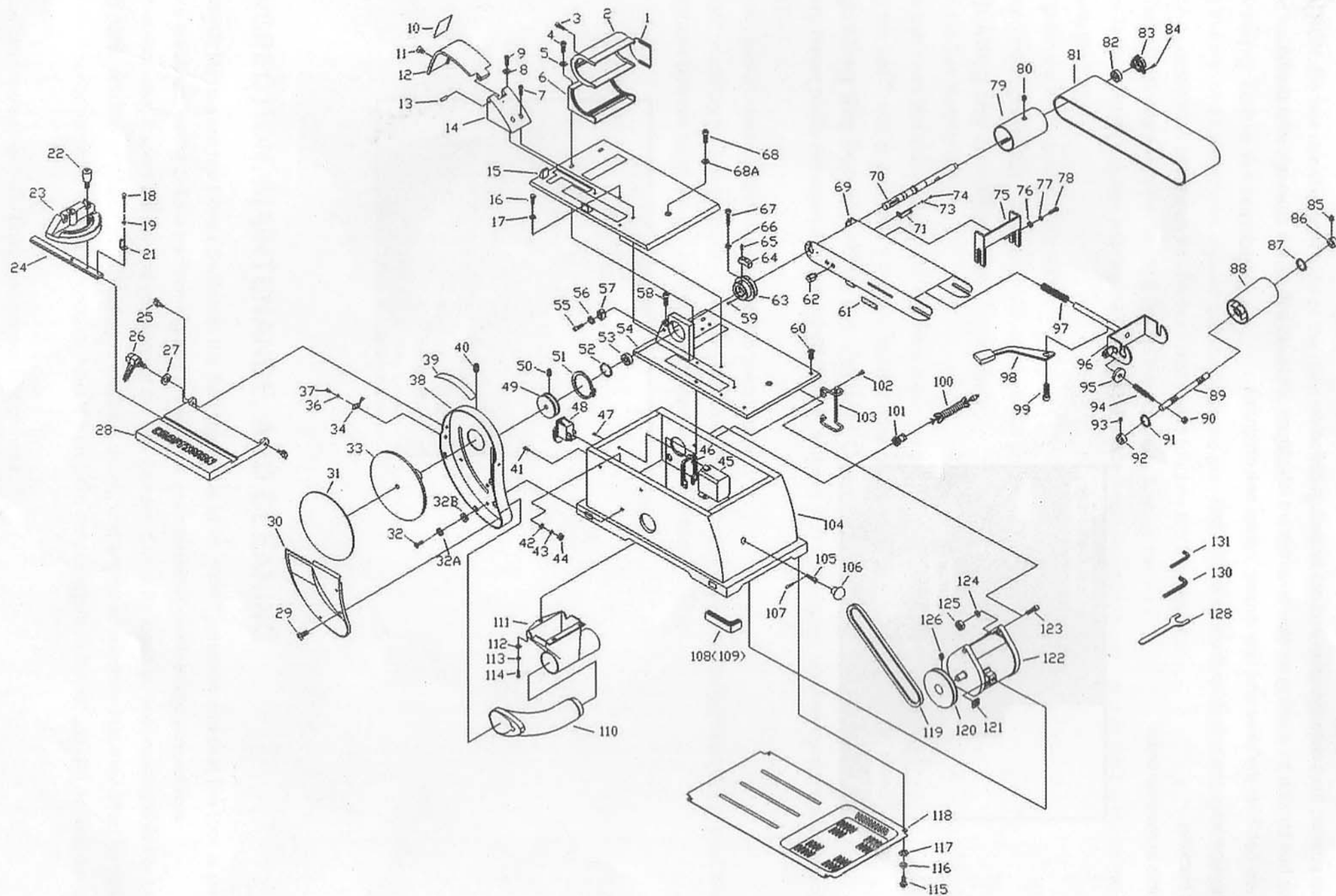
1. Before each use, inspect the general condition of the Belt Sander. Check for loose screws, misalignment or binding of moving parts, cracked or broken parts, damaged electrical wiring, and any other condition that may affect its safe operation. If abnormal noise or vibration occurs, have the problem corrected before further use. Do not use damaged equipment.
2. Periodically recheck all nuts, bolts, and screws for tightness.
3. Cover and store in a clean and dry location.
4. Apply a light coat of paste wax to the worktable to make feeding stock easier.
5. Use compressed air to blow out dust and debris from sander and motor.

6. The bearings within are sealed and do not require lubrication.

▲Sanding Belt Replacement

1. Remove table assembly or work stop.
2. Remove pointer, then slide cover up and out from dust deflector.
3. Release belt tension by pushing tension lever toward idler drum. Slide old belt off the drive and idler drums.
4. Slide new belt over the drive and idler drums; center belt on drums.
5. Push tension lever towards drive drum to tension belt.
6. Check tracking.
7. Assemble in reverse order





ASSEMBLY DRAWING

PARTS LIST

Part#	Description	Qty.
1	Side cover	1
2	Dust deflector	1
3	Pan head screw	1
4	Socket head bolt	2
5	Flat washer	2
6	Dust cover	1
7	Socket head bolt	2
8	Flat head bolt	1
9	Socket head bolt	1
10	label	1
11	Flat head bolt	1
12	Belt cover	1
13	Pin	1
14	Belt cover support	1
15	Base cover	1
16	Horizontal Stop	1
17	Hex nut	1
18	Pan head screw	1
19	Flat washer	1
21	pointer	1
22	knob	1
23	Miter gauge	1
24	T-slider	1
25	knob	2
26	Locking handle	1
27	Flat washer	1
28	table	1
29	Pan head screw	4
30	Disc cover	1
31	Abrasive disc	1
32	Pan head screw	3
32a	Lock washer	3
32b	Flat washer	3
33	Aluminum disc	1
34	pointer	1
36	Lock washer	1
37	Pan head screw	1
38	Disc guard	1
39	label	1
40	Set screw	2
42	Flat washer	2
43	Lock washer	2

Part #	Description	Qty.
44	Hex nut	2
47	Thread forming screw	3
48	Ball Bearing, 6201	1
49	Pulley	1
50	Set screw	2
51	Retaining ring	1
52	Retaining ring	3
53	Ball bearing	2
54	base cover	1
55	Socket head bolt	1
56	Flat washer	1
57	Vertical stop	1
58	Socket head bolt	1
59	Socket head bolt	3
60	Flat head screw	8
61	label	1
62	Stud	1
63	Pivot	1
64	Pivot stop	2
65	Socket head bolt	2
66	Nut	1
67	Socket head bolt	1
68	Socket head bolt	1
68A	Nut	1
69	Platen	1
70	Shaft	1
71	Pointer	1
73	Flat washer	1
74	Pan head screw	1
75	Work stop	1
76	Flat washer	2
77	Lock washer	2
78	Socket head bolt	2
79	Drive drum	1
80	Set screw	2
81	Abrasive belt	1
82	Ball bearing	1
83	Bearing plate	1
84	Socket head bolt	3
85	Set screw	1
86	Spacer	1
87	C ring	1

Part#	Description	Qty.
88	Idler drum	1
89	Shaft	1
90	Nut	1
91	C ring	1
92	Spacer	1
93	Set screw	1
94	Tracking screw	1
95	Tracking nut	1
96	Idler drum support	1
97	Spring	1
98	Tighten lever	1
99	Socket head bolt	1
100	Line cord	1
101	Strain relief	1
102	Pan head screw	4
103	Line cord hook	2
104	Body	1
105	Bolt	1
106	Rubber pad	1
107	Pin	1
108	Foot A	2

Part #	Description	Qty.
109	Foot B	2
110	Tube	1
111	Dust chute	1
112	Flat washer	2
113	Lock washer	3
114	Socket head bolt	3
115	Pan head bolt	6
116	Lock washer	6
117	Flat washer	6
118	Bottom cover	1
119	V-belt	1
120	Motor pulley	1
121	nut	1
122	Motor	1
123	Socket head bolt	2
124	Flat washer	2
125	nut	2
126	Set screw	2
128	Wrench	1
129	Hex wrench	1
130	Hex wrench	1
131	Hex wrench	1

☐ TROUBLESHOOTING

SYMPTOM	PROBABLE CAUSE	REMEDY
Belt Sander does not turn on	Not plugged in to electrical outlet Power Switch defective Motor or wiring problem	Connect to outlet Replace Switch Repair with a qualified technician
Motor slows when sanding	V-Belt too tight Sanding with too much pressure on stock	A qualified technician needs to loosen tension Apply less pressure when sanding
Sanding Belt runs off Idler Roller	Not tracking properly	Adjust Sanding Belt Tracking
Wood burns while sanding	Sanding Disc or Belt is loaded with debris	Clean or replace Disc or Belt.
Sander makes excessive noise	V-Belt too tight	A qualified technician needs to loosen